

GROSS NECROPSY REPORT

SPECIES Tursiops truncatus **FIELD NUMBER** 54IMMS031111 **DATE** 03/14/11

LOCATION GofM, Dauphin Island **LAT** 30.24921/**LONG** 88.20676

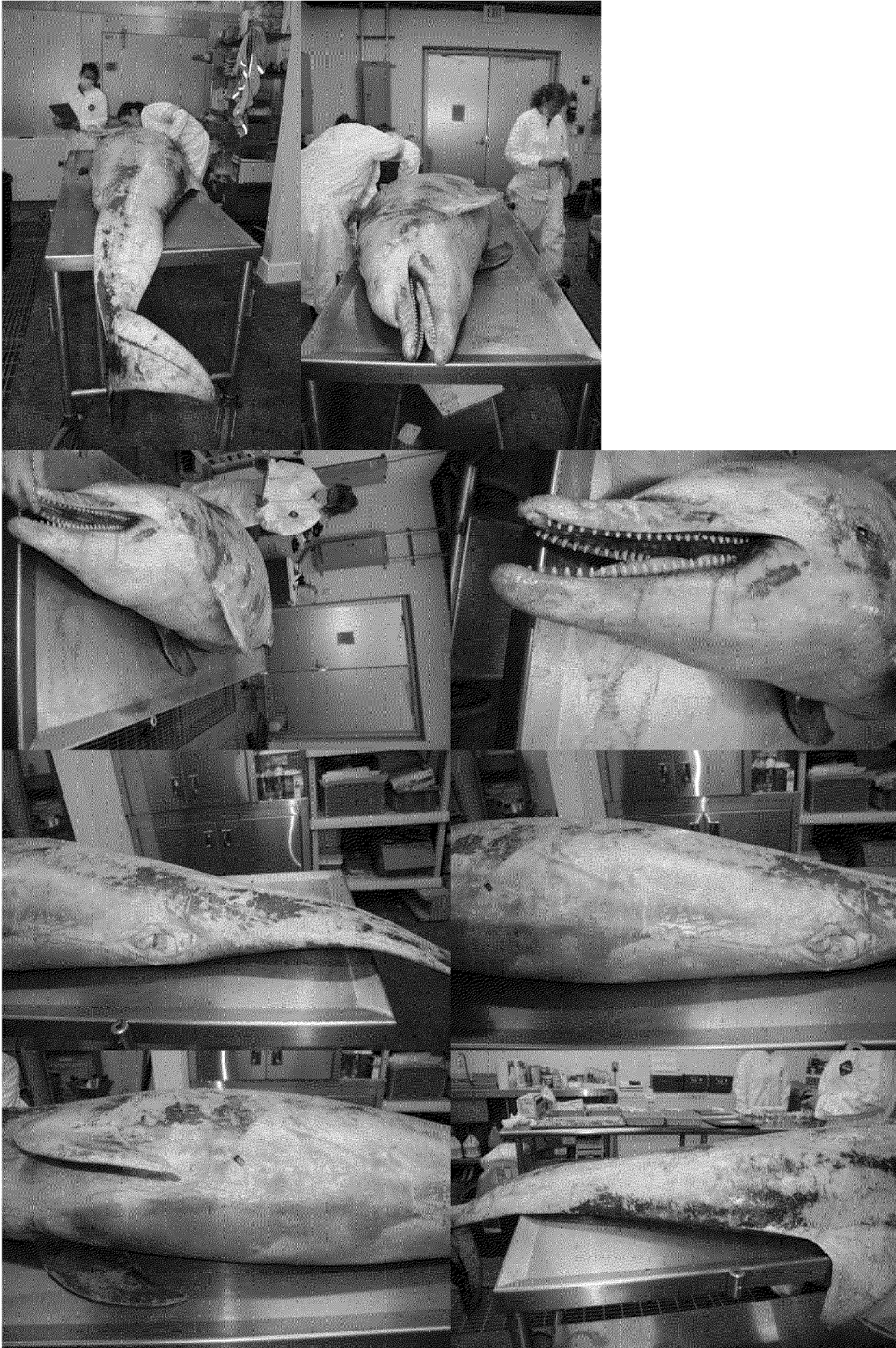
GENDER Female **TL** 237 cm **COND** Code 3 **WEIGHT** Approx 350#/ 159 kgs

HISTORY: Single stranding event. Fishing line found attached to SQ tissue on lower right commisure. Fishing line was collected and retained with COC.

NECROPSY

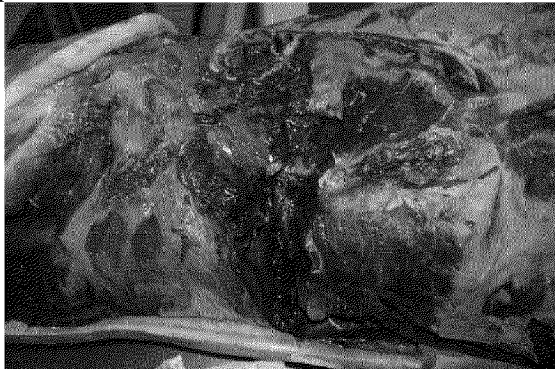
EXTERNAL EXAM: Loss of nuchal fat- "peanut head". Lateral vertebral processes visible on peduncle. Scapula evident on both sides. Indentation ventral to dorsal fin. Body condition- 2/5. Fishing line found attached to SQ tissue on lower right commisure. No leader or hook were found or seen on radiographs. A hole was present medially to end of fishing line. Fishing line came out easily when pulled. Left eye ruptured. Teeth- upper left- 23, #8 (caudal to cranial) broken diagonally. Lower left- 23, #24 missing. Upper right- 24, Lower right- 25. Skin missing along majority of sides. 75% loss on right dorsal and ventral fluke. Skin missing on dorsal fin. Large amount of blood coming out of blowhole and mouth. Medial right flipper has numerous conspecific rake mark scars.







INTERNAL EXAM: Blubber layer tightly adhered to SQ fascia. Hemorrhaging around the prescapular area. Serosanguineous fluid in abdominal cavity. Sand was present in the rectum.



BLUBBER: Slight icterus to blubber layer.

MUSCULOSKELETON

Axial Muscle: Edema in the submandibular area. Hemorrhaging around the prescapular lymph nodes and lateral neck area.

Axial Skeleton: No fractures found.

Ribs & Sternum: No fractures found.

CIRCULATORY SYSTEM

Heart: Heart was dark blackish red. Valves appeared grossly normal.

RESPIRATORY SYSTEM

Blowhole: Bloody fluid came out of blowhole.

Trachea: Sand present in oropharynx. Tracheal mucosa was dark red and thicker than normal.

Lungs: Dark, blackish red. Long thin white linear parasites found in both lungs. Generalized 2 mm granulomas throughout both lungs. Right lung was less autolyzed than left.

DIGESTIVE SYSTEM: Necrotic ulcerated areas on the hard palate.



Esophagus: Sand in the esophagus

Fore Stomach: Not examined. Entire stomach collected whole and frozen.

Main Stomach: Not examined. Entire stomach collected whole and frozen.

Pyloric Stomach: Multiple nodules palpable. Biopsy section collected and put in formalin.

Intestine: Dark, red gas filled.



Describe food-stuffs found in GI Tract: Not examined. Entire stomach collected whole and frozen.

Describe parasites found in GI Tract: Not examined. Entire stomach collected whole and frozen.

Liver: Autolyzed. Greenish black, soft.

Pancreas: Too autolyzed to evaluate. Subcapsular gas.

URINARY SYSTEM

Kidneys: No stones found. Dark blackish red. Autolyzed.

Adrenals: Too autolyzed to evaluate.

Urinary Bladder: No urine or stones.

ENDOCRINE & HEMOLYMPHATIC SYSTEMS

Thymus: Not present.

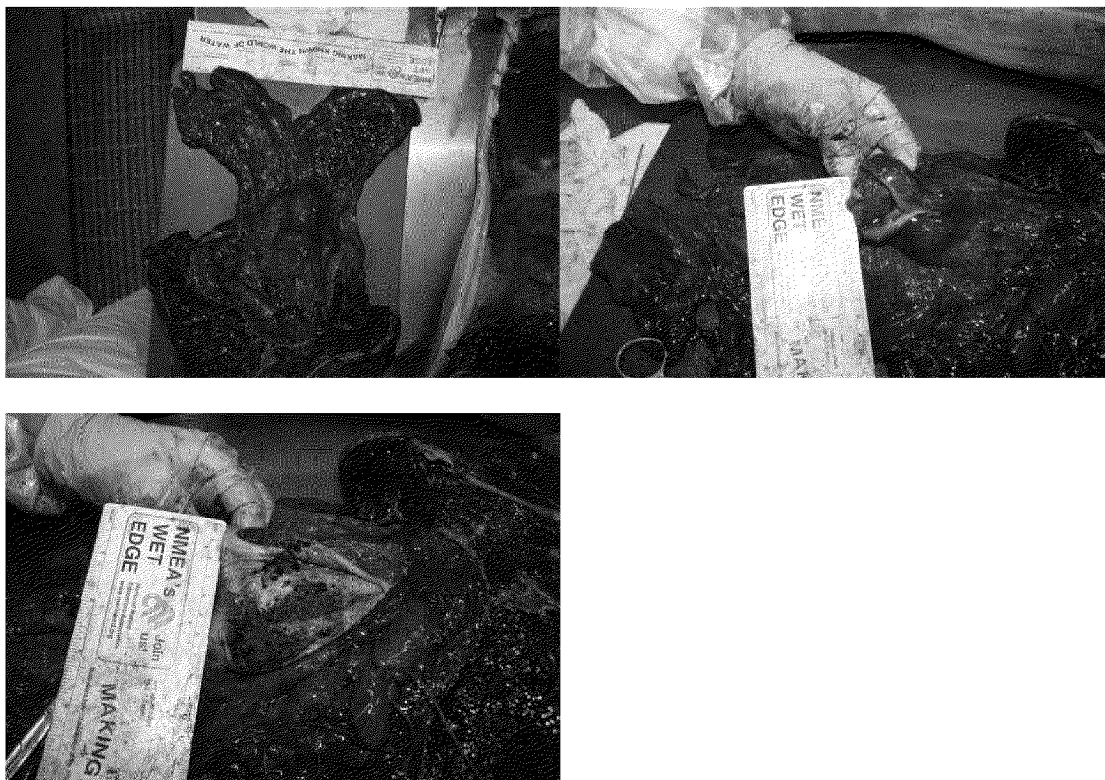
Thyroid: Too autolyzed to evaluate.

Pituitary: Too autolyzed to evaluate.

Spleen: Too autolyzed to evaluate.

Lymph Nodes: Prescapular ln are very enlarged and necrotic. Lung ln autolyzed. Mesenteric ln dark blackish red. Hilar ln were dark blackish red, soft (autolyzed).

REPRODUCTIVE TRACT: Uterus was dark red, larger than normal and flaccid. No fetus was present. Cervix had some blood in it. Vulvar area was enlarged. Sand was present in the vaginal area.



CENTRAL NERVOUS SYSTEM

Brain: Too autolyzed to evaluate

Spinal Cord: Too autolyzed to evaluate

HEAD

SENSORY ORGANS

Eyes: Ruptured

Ears: Appeared grossly normal.

CONCLUSIONS: Several abnormal lesions were found including: parasites in lungs; flaccid uterus which appeared to indicate postparturient; very enlarged prescapular lymph nodes with necrosis; hemorrhaging around the prescapular area and neck; edema in the submandibular area; blood coming out of the blowhole; and poor body condition. Sign of human interaction was found with fishing line attached to subcutaneous tissue in left lower commissure of the mouth but no fishing hook or leader was found attached to the fishing line.

Carcass Disposition: Frozen at IMMS

CAUSE OF DEATH FROM FIELD DETERMINATION: Cause of death could not be determined on gross evaluation.

This report was generated by: Dr. Connie Chevis

TISSUES COLLECTED

PAH/Chemistry: NOAA frozen, foil

Blubber

Liver

Lung

Kidney

Swabs

PAH/Chemistry: NOAA frozen, glass vial

Abdominal fluid

CYP 1A: NOAA Frozen

Skin + full-thick blubber section

CYP 1A: NOAA, formalin

Skin + full-thick blubber section

Virology: NOAA, frozen

Spleen

Lung assoc LN

Lung

Kidney

Liver

Biotoxins: NOAA. Frozen

Liver

Parasites: NOAA, In 70% isopropyl alcohol

Internal- Lung

Life History: NOAA , Frozen

Teeth- 4

Stomach, whole

Skin (isotope)

Skin (genetics)

Histology: NOAA, in formalin

Trachea

Heart (all 4 chambers)

Aorta

Pulmonary artery

Pharynx

Tongue

Esophagus

Small Intestine

Colon

Urinary bladder

Blubber

Skin
Muscle
3rd stomach lesion
Gonad (L&R)
Mammary gland
Uterus/ uterine horn (R&L)
Vagina/Cervix
Lymph node: Hilar, mesenteric

Postpartient female: NOAA

Uterine horn: in formalin, -80 R& L

PAH: IMMS X 3 Frozen

Frozen: IMMS X 6

Blubber
Muscle
Liver X 7
Teeth- 6, lower left jaw
Skin X 2
Lower left jaw

Histo (10% Buffered Formalin): DROT x1, IMMS X2

Trachea
Heart- R, L Atrium, R,L Ventricle.
Aorta
Pulmonary artery
tongue
Esophagus
Duodenum
Jejunum
Ileum
Colon
Spleen
Urinary bladder
Blubber
Muscle
Ovary- L & R
Uterus
Vagina
Cervix
Mammary gland
3rd stomach lesions
Skin/blubber full thickness

Viral: IMMS, frozen

Spleen

Parasites: in formalin

Lung

PHOTOS/VIDEO: Yes/No

ASSOCIATED DATA SHEETS: Level A Data Form, Delphinid Specimen record, IMMS MM Necropsy tissue form, Northern Gulf UME Sample Collection Check List, NOAA Chain of custody record.