

\\Fluent Simulations\BSR\Simulation results\ BSR-mesh-moving-last-2013-2-26\

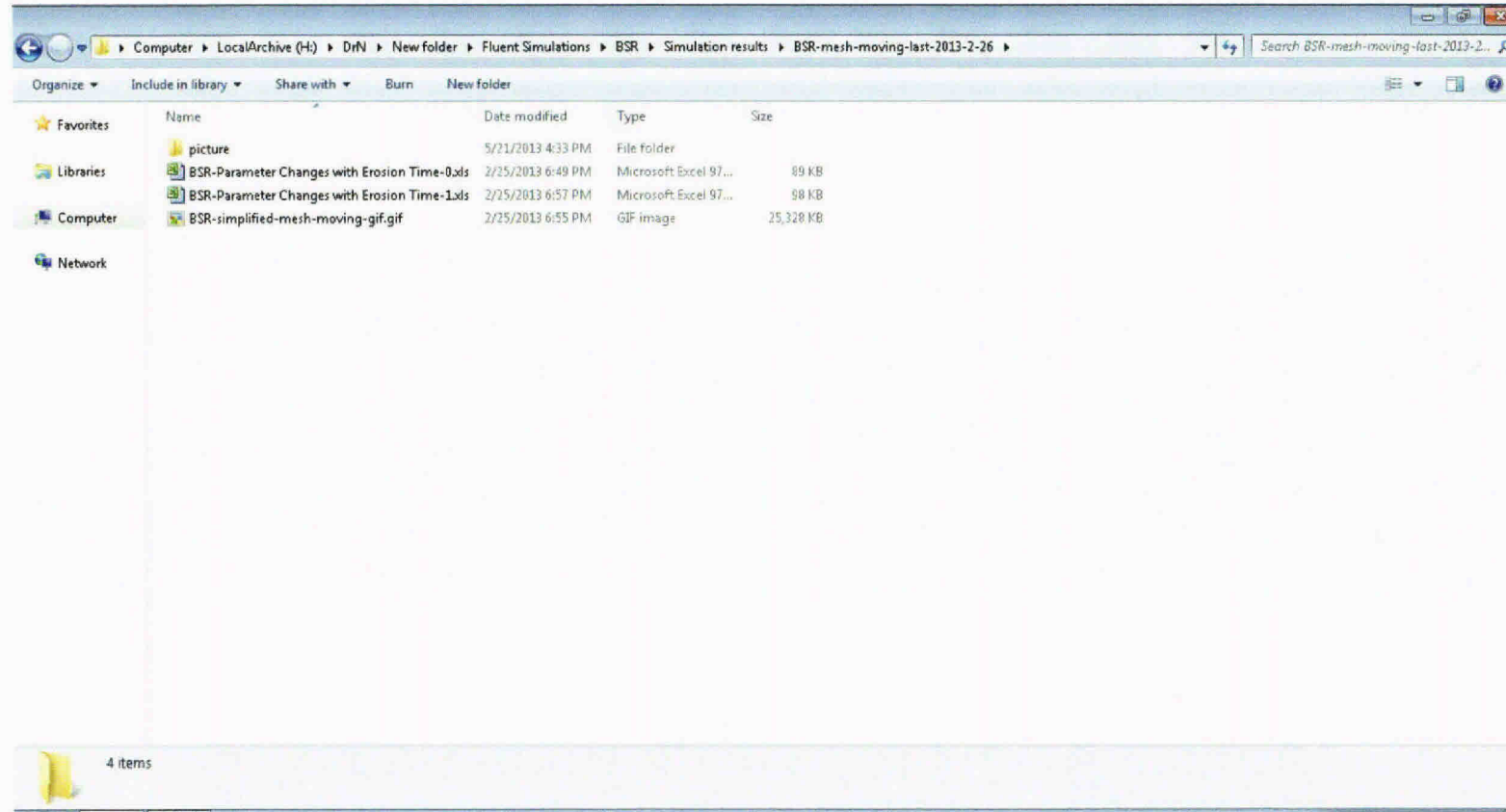
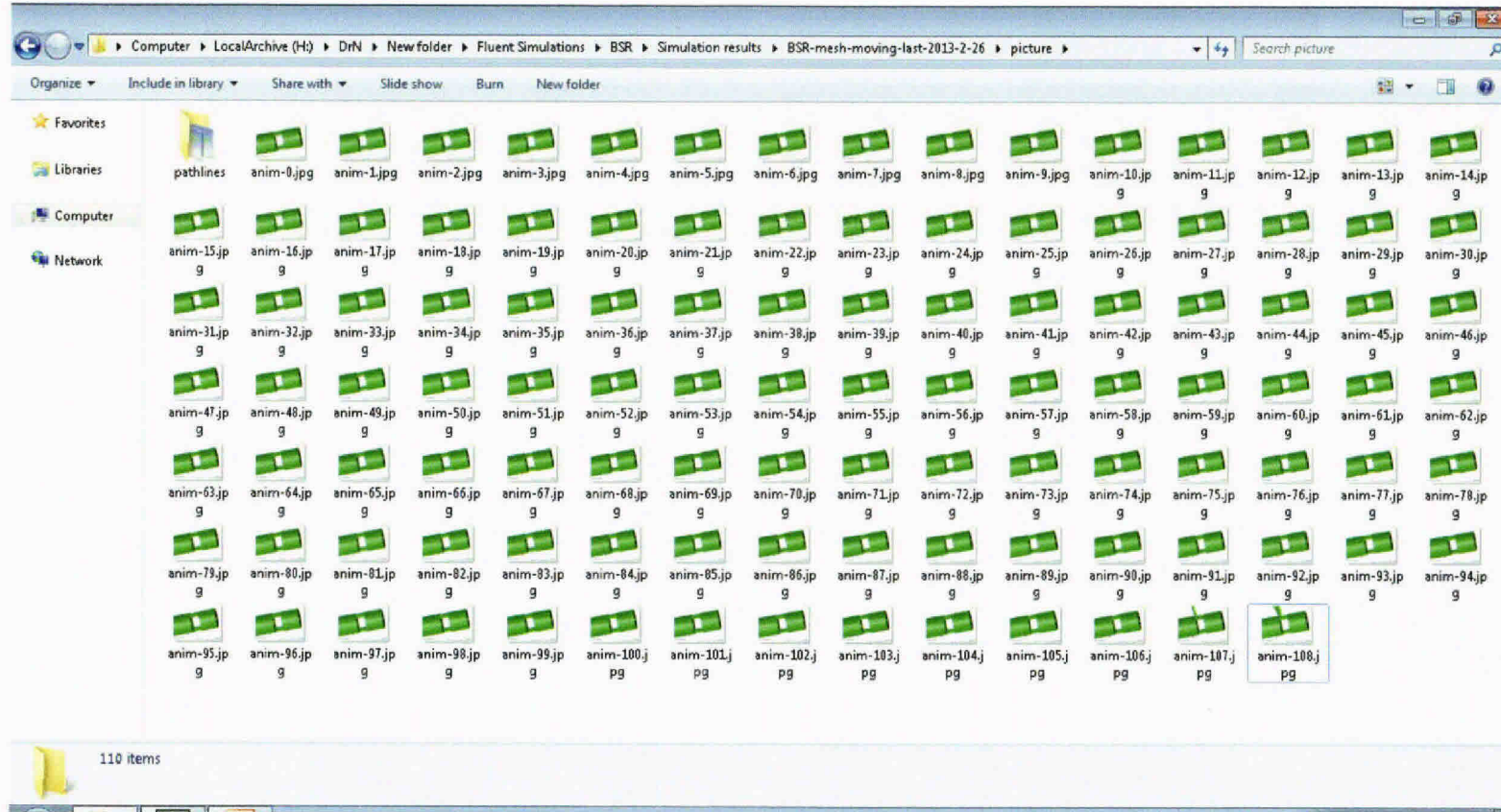
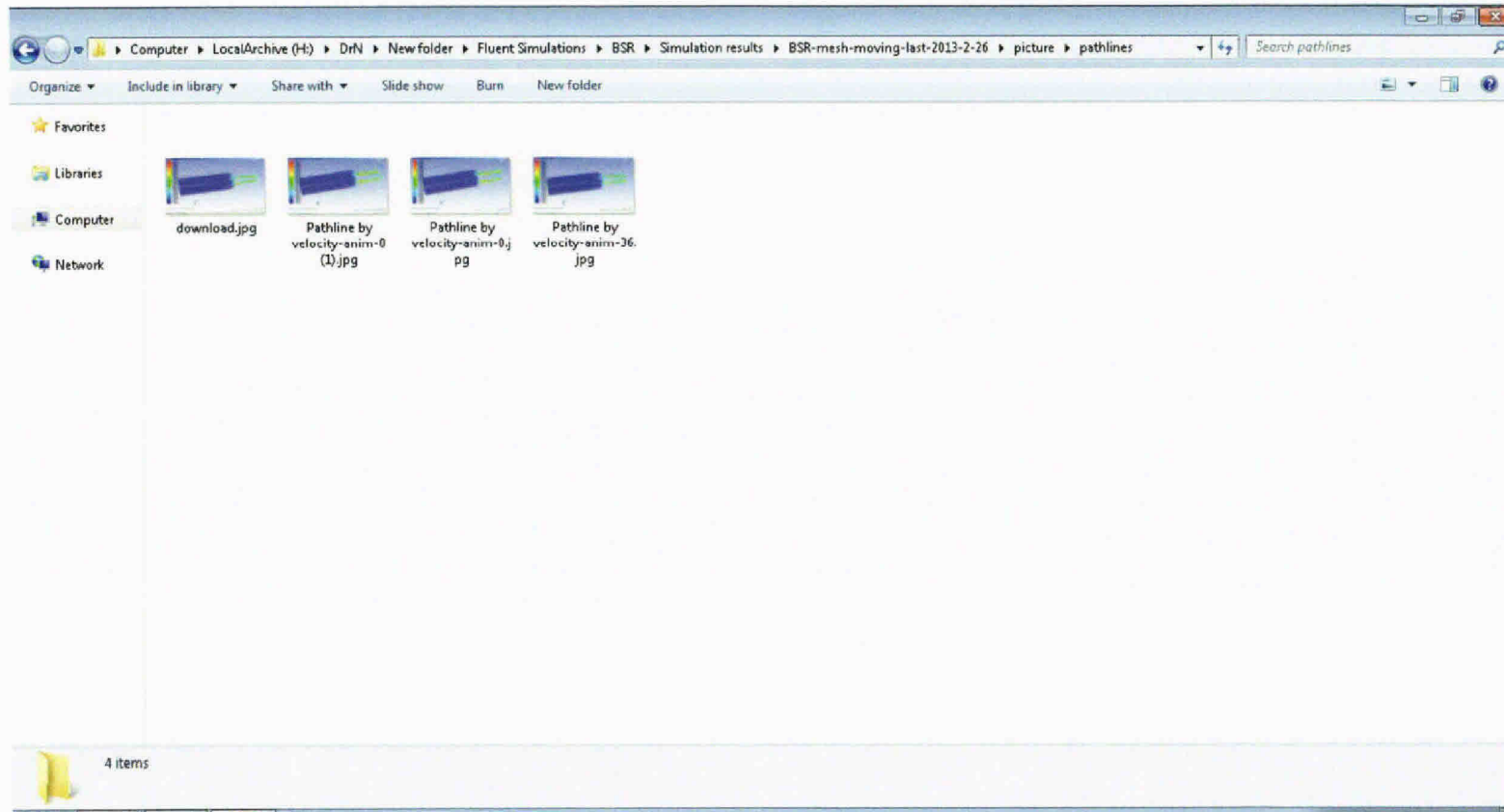


Exhibit No. _____
11732
Worldwide Court
Reporters, Inc

\\Fluent Simulations\BSR\Simulation results\ BSR-mesh-moving-last-2013-2-26\picture\

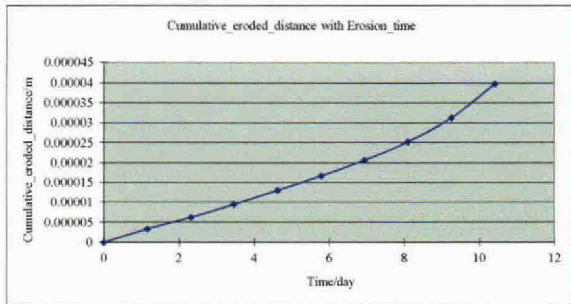
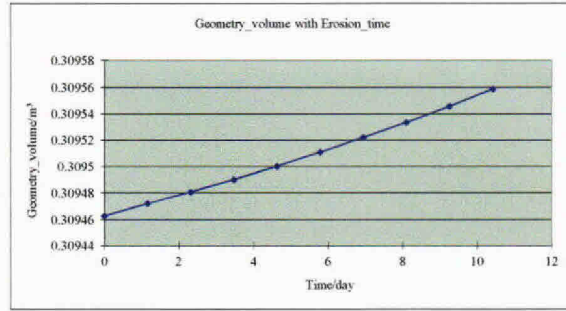
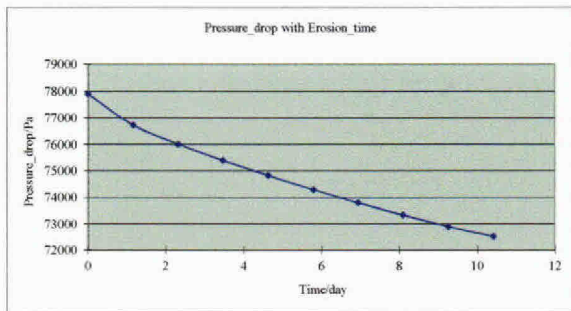
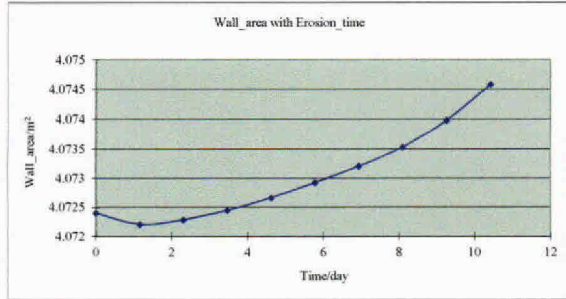


\\Fluent Simulations\BSR\Simulation results\ BSR-mesh-moving-last-2013-2-26\picture\pathlines



BSR-Parameter Changes with Erosion Time-0.xls

Erosion_Time/s	Erosion_Time/Hours	Erosion_Time/days	Wall_area/m ²	Geometry_vol/m ³	Pressure_drop/Pa	Cumulative_erosion_distance/m	Erosion_rate
0	0	0	4.073403	0.30944779	7797.7	0	0
10000	2.77777778	1.55555556	4.0732065	0.3094712	7670.758	3.84E-06	5.07181E-08
20000	5.55555556	3.11111111	4.073285	0.3094808	7621.481	8.26E-06	6.10E-08
30000	8.33333333	4.17222222	4.07343	0.3094903	7540.87	9.52E-06	7.31E-08
40000	11.11111111	5.55555556	4.07366	0.3095004	7489.66	1.20E-05	8.34E-08
50000	13.88888889	6.94444444	4.0739208	0.3095107	7429.344	1.46E-05	9.48E-08
60000	16.66666667	8.33333333	4.074204	0.3095221	7351.57	1.73E-05	1.07E-07
70000	19.44444444	9.72222222	4.074512	0.3095346	7257.88	2.02E-05	1.20E-07
80000	22.22222222	11.11111111	4.074844	0.3095481	7150.74	2.32E-05	1.28E-07
90000	25	12.5	4.075203	0.3095626	7032.7	2.63E-05	1.48E-07



BSR-Parameter Changes with Erosion Time-1.xls

Erosion_Time/s	Erosion_Time/hours	Erosion_Time/day	Wall_area/m ²	Geometry_vol cm ³ /m ³	Pressure_drop (Pa)	Cumulative_er oded_distance	erosion_rate
0	0	0	4.072403	0.30946279	77937	0	0
100000	27.77777778	1.157407407	4.0722065	0.3094722	76737.758	3.34E-06	5.07163E-08
200000	55.55555556	2.314814815	4.072185	0.3094808	76014.661	6.79E-06	6.19E-08
300000	83.33333333	3.472222222	4.07245	0.3094903	75432.87	9.52E-06	7.31E-08
400000	111.1111111	4.62962963	4.07256	0.3095004	74839.66	1.33E-05	8.54E-08
500000	138.8888889	5.787037037	4.0728108	0.3095107	74294.344	1.64E-05	9.48244E-08
600000	166.6666667	6.944444444	4.073204	0.3095221	73811.37	2.07E-05	1.05E-07
700000	194.4444444	8.101851852	4.073542	0.3095338	73351.88	2.53E-05	1.30E-07
800000	222.2222222	9.259259259	4.073974	0.3095457	72904.74	3.12E-05	1.50E-07
900000	250	10.41666667	4.07458	0.3095588	72538.27	3.83E-05	1.68E-07
1000000	277.7777778	11.57407407	4.075344	0.309563	72406.63	7.99E-05	1.91E-07
1070000	287.2222222	11.96259259	4.431656	0.3120418	57471.08	6.79E-02	3.31E-05

