

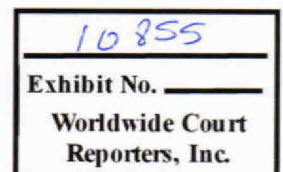
From: Bozeman, Walt
Sent: Wed Apr 21 21:11:54 2010
To: Mix, Kurt; Bodek, Robert
Subject: Macondo Info
Importance: Normal
Attachments: WCD plots 42110.ZIP; Macondo_QUICK_WCD 42110.ZIP; Macondo_QUICK_WCD 42110.ZIP; Macondo_QUICK_WCD 42110.ZIP; Macondo_QUICK_WCD 42110.ZIP; Macondo_QUICK_WCD 42110.ZIP

Bobby,

I know you are the contact for sub-surface information but Kurt needs to check his model with some information from this morning. This is the Prosper run we shared with Dave Rainey this morning. We are calculating a PI of 50 bbl/psi. Hope this helps. Happy to discuss.

Walt

<<...>> <<...>> <<...>> <<...>> <<...>>

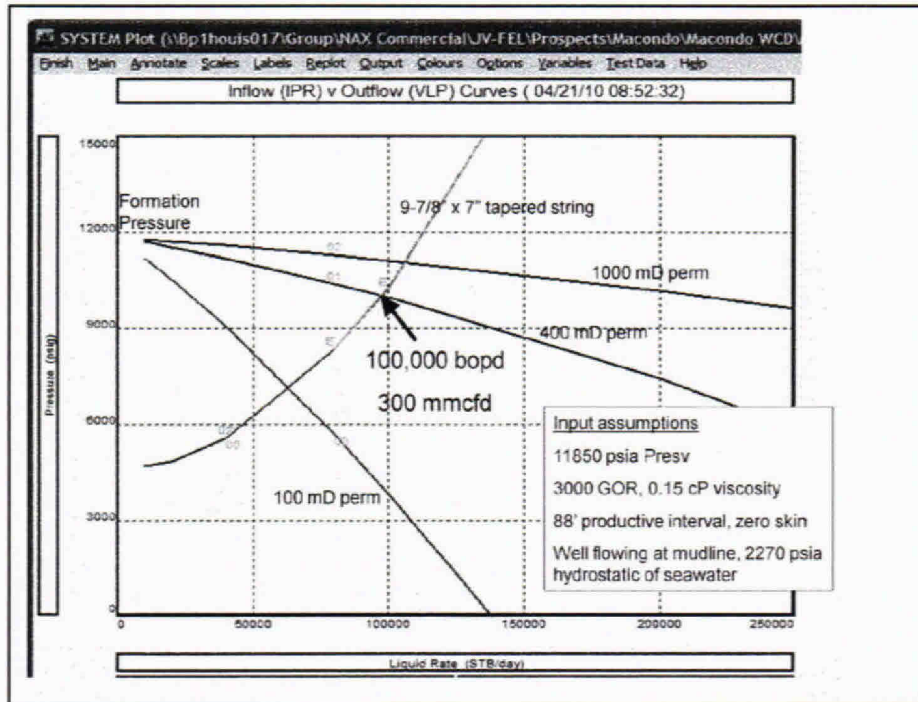


CONFIDENTIAL

BP-HZN-2179MDL04877350

BPD344-077782

TREX 010855.0001

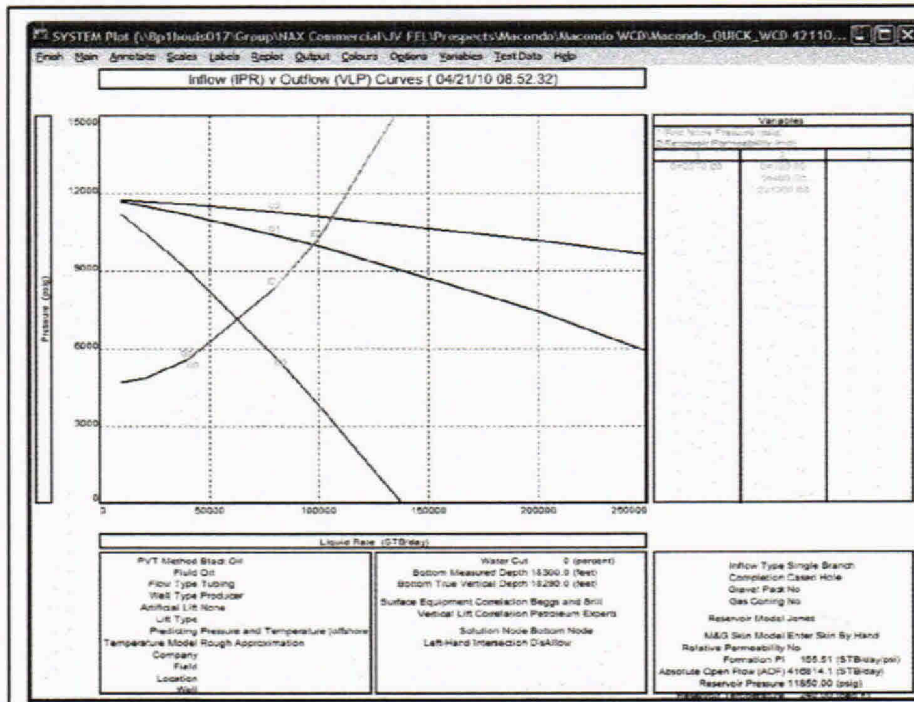


CONFIDENTIAL

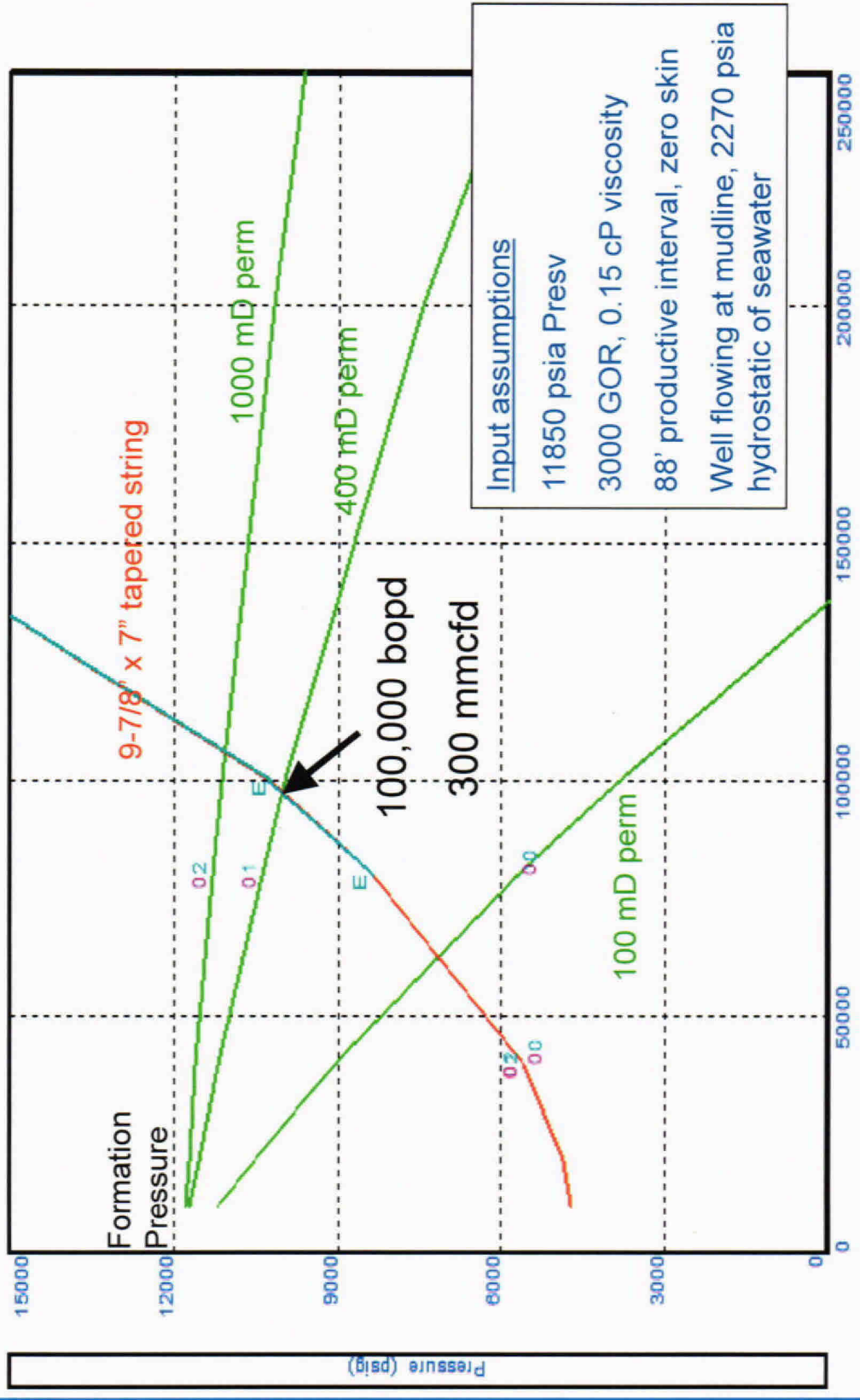
BP-HZN-2179MDL04877351

BPD344-077783

TREX 010855.0002

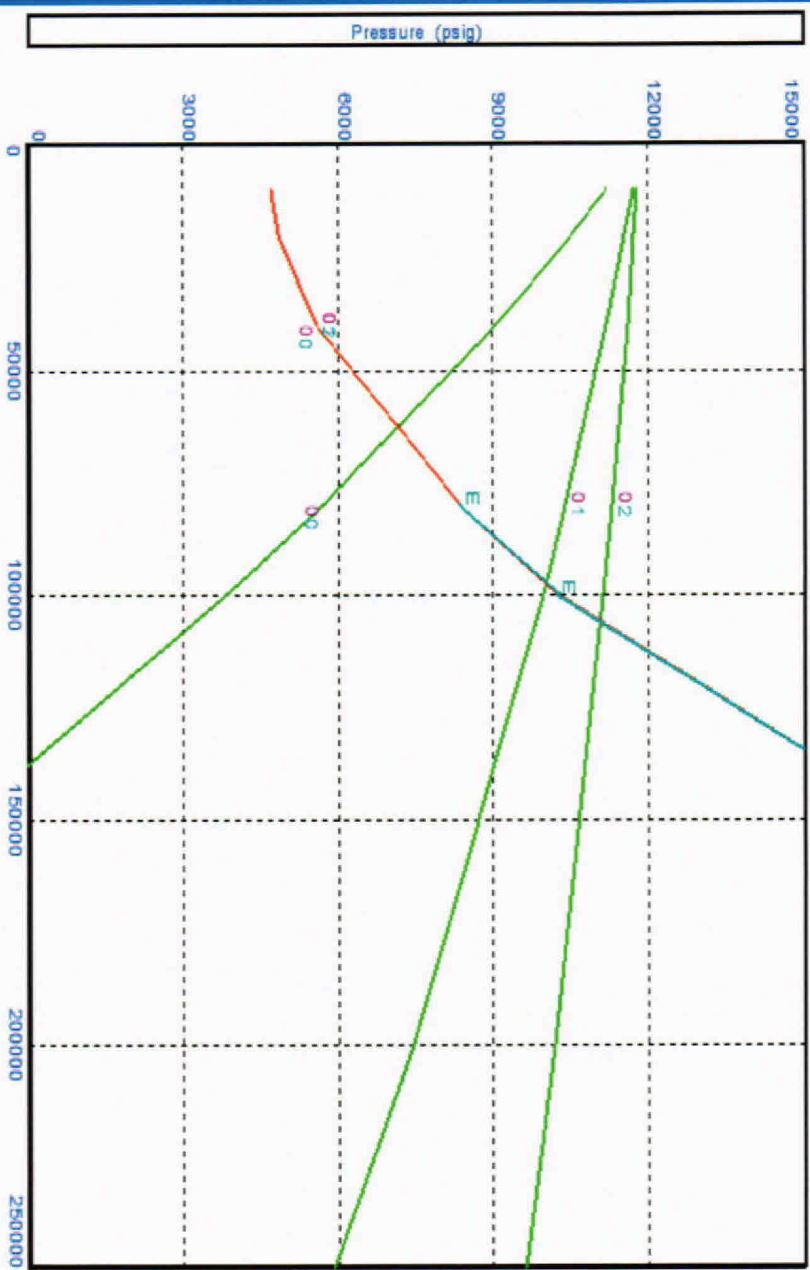


Inflow (IPR) v Outflow (VLP) Curves (04/21/10 08:52:32)



Liquid Rate (STB/day)

Inflow (IPR) v Outflow (WLP) Curves (04/21/10 08:52:32)



PVT Method Black Oil
Fluid Oil
Flow Type Tubing
Well Type Producer
Artificial Lift None
Lift Type
Predicting Pressure and Temperature (offshore)
Temperature Model Rough Approximation
Company
Field
Location
Well

Water Cut 0 (percent)
Bottom Measured Depth 18300.0 (feet)
Bottom True Vertical Depth 18290.0 (feet)
Surface Equipment Beegs and Brill
Vertical Lift Correlation Petroleum Experts
Solution Node Bottom Node
Left-Hand Intersection Disallow

Inflow Type Single Branch
Completion Cased Hole
Gravel Pack No
Gas Coning No
Reservoir Model Jones
M&G Skin Model Enter Skin By Hand
Relative Permeability No
Formation PI 155.51 (STB/day/psi)
Absolute Open Flow (AOF) 416814.1 (STB/day)
Reservoir Pressure 11850.00 (psig)
Reservoir Temperature 220.00 (degF)

| Variables | | |
|--------------------------------|-------------|--|
| 1: First Node Pressure (psig) | | |
| 2: Reservoir Permeability (md) | | |
| 1 | 0 = 100.00 | |
| | 1 = 400.00 | |
| | 2 = 1000.00 | |
| 0 = 2270.00 | | |

File not printable

CONFIDENTIAL

BP-HZN-2179MDL04877353

BPD344-077785

TREX 010855.0006

File not printable

CONFIDENTIAL

BP-HZN-2179MDL04877354
BPD344-077786

TREX 010855.0007

File not printable

CONFIDENTIAL

BP-HZN-2179MDL04877355

BPD344-077787

TREX 010855.0008

File not printable

CONFIDENTIAL

BP-HZN-2179MDL04877356
BPD344-077788

TREX 010855.0009