

10

D

D



Well Integrity Test Data Review

14:00hr 16th July 2010

10895
Exhibit No. _____
Worldwide Court Reporters, Inc.

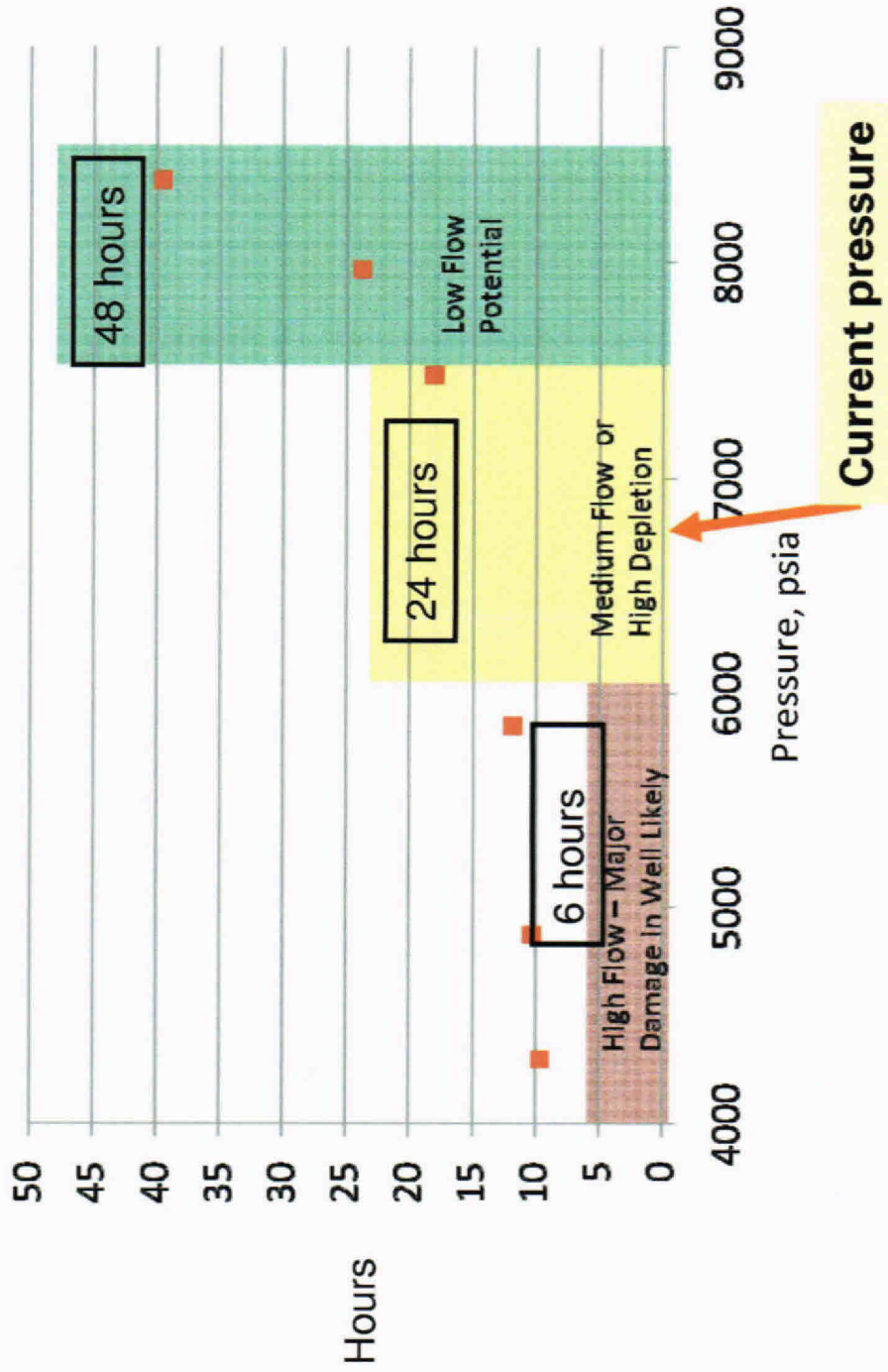
Agenda



- Operational update
- Data review
- Interpretation & Discussion
- Recommendations
- Forward Plan



Well Integrity Test Duration





Data

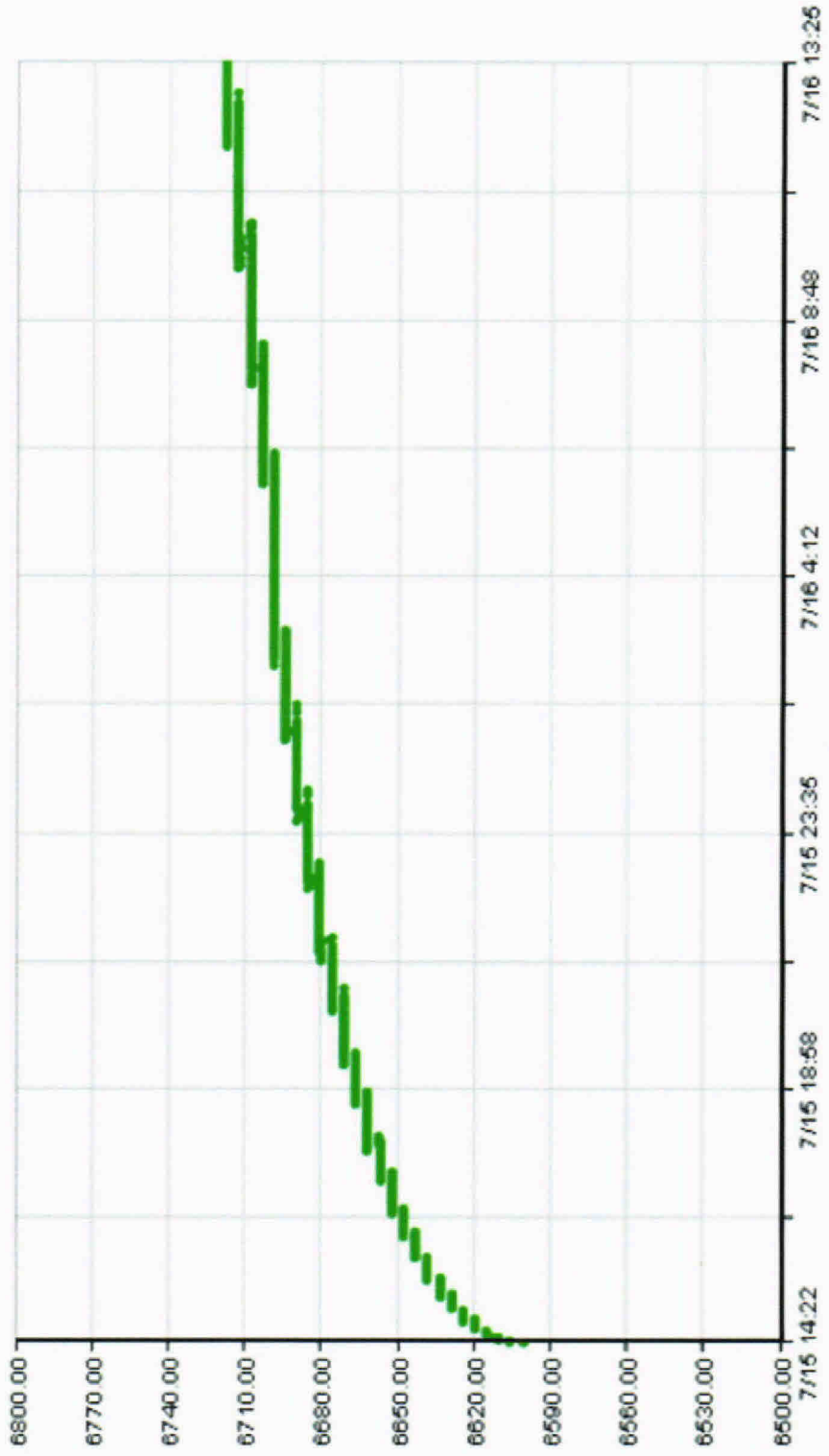
Pressure from the Kill line pressure transmitter (from 14:45hrs)





Data

Pressure from the Kill line pressure transmitter
(from full closure of choke @ 14:22hr)



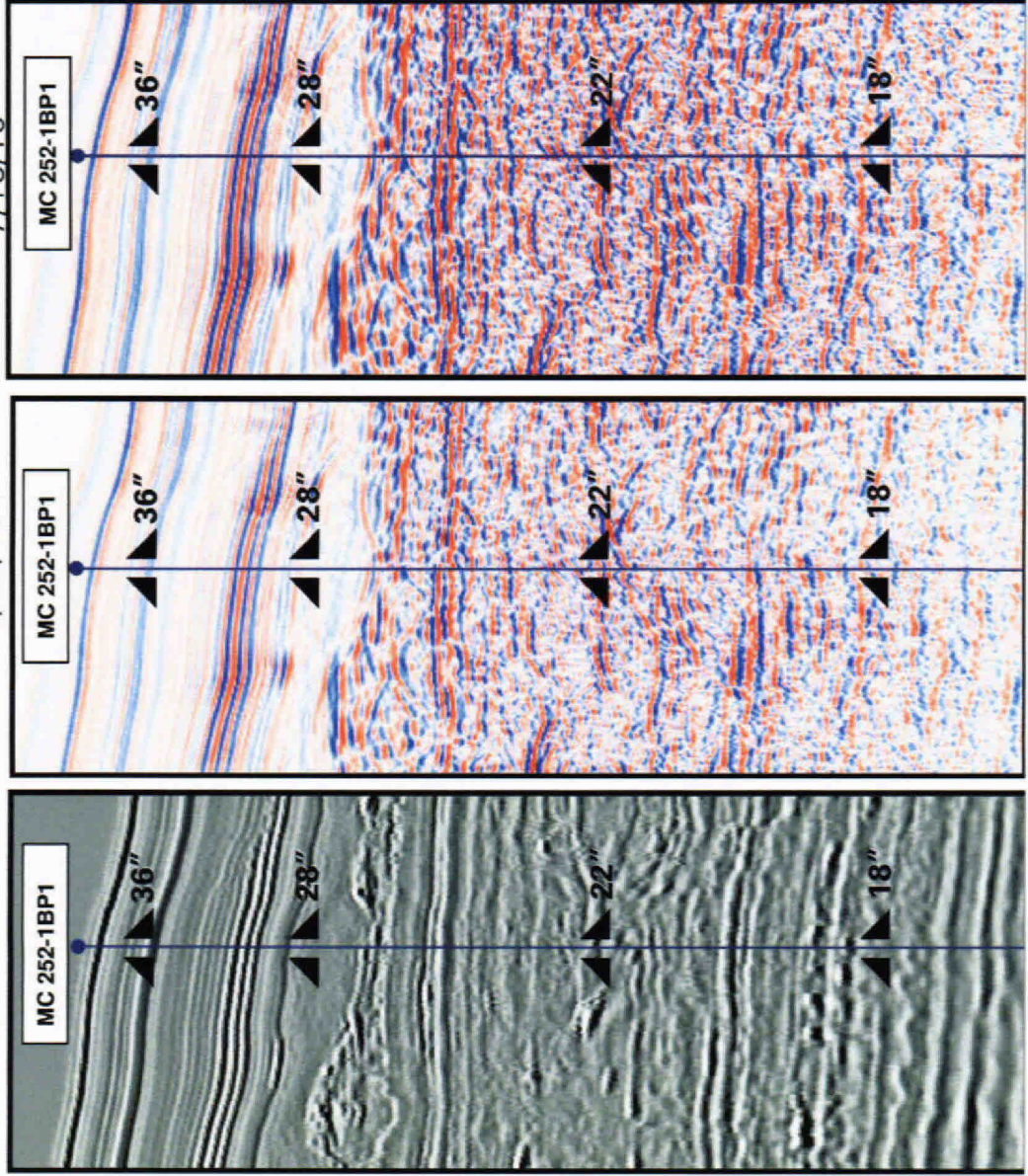


Pre-Drill 3D, Pre-Shut in 2D, Shut-in 2D

Shut-in 2D
7/16/10

Pre-Shut in 2D
7/13/10

Pre-Drill 3D



OLSII 7 13.10 6

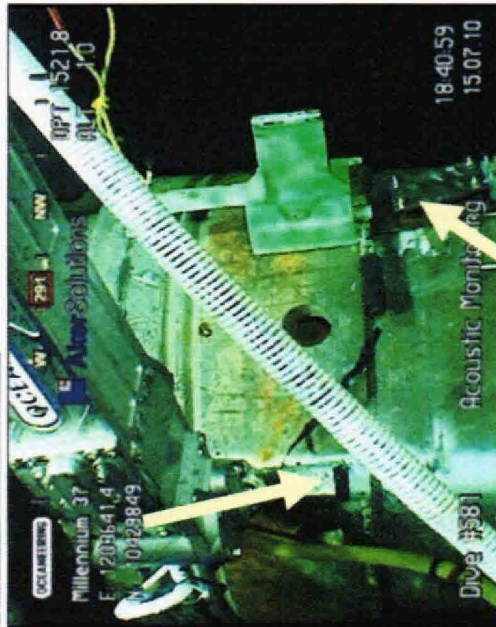
CONFIDENTIAL

IMV154-006640

Data

Well head flow indicators

Temperature probe



Hydrophone

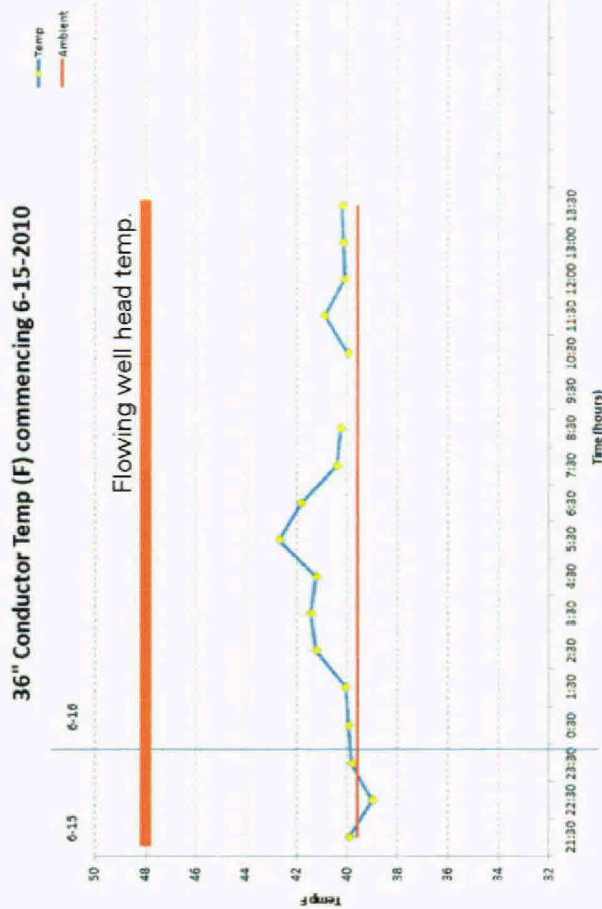
Acoustic Shot

- No observed change in the noise profile

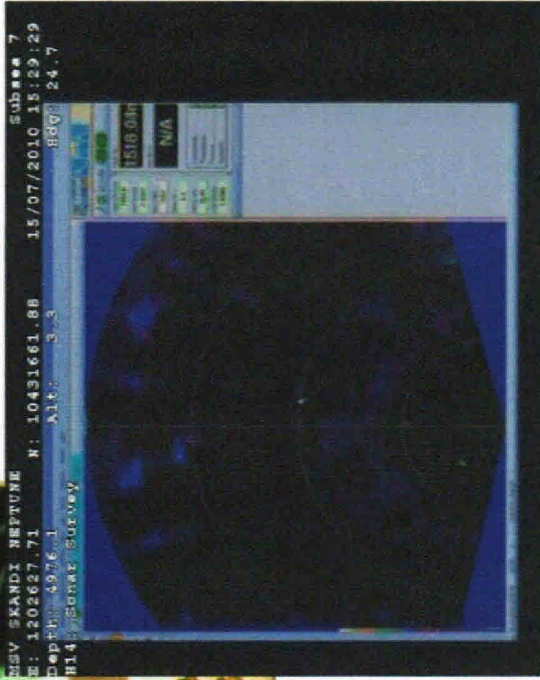
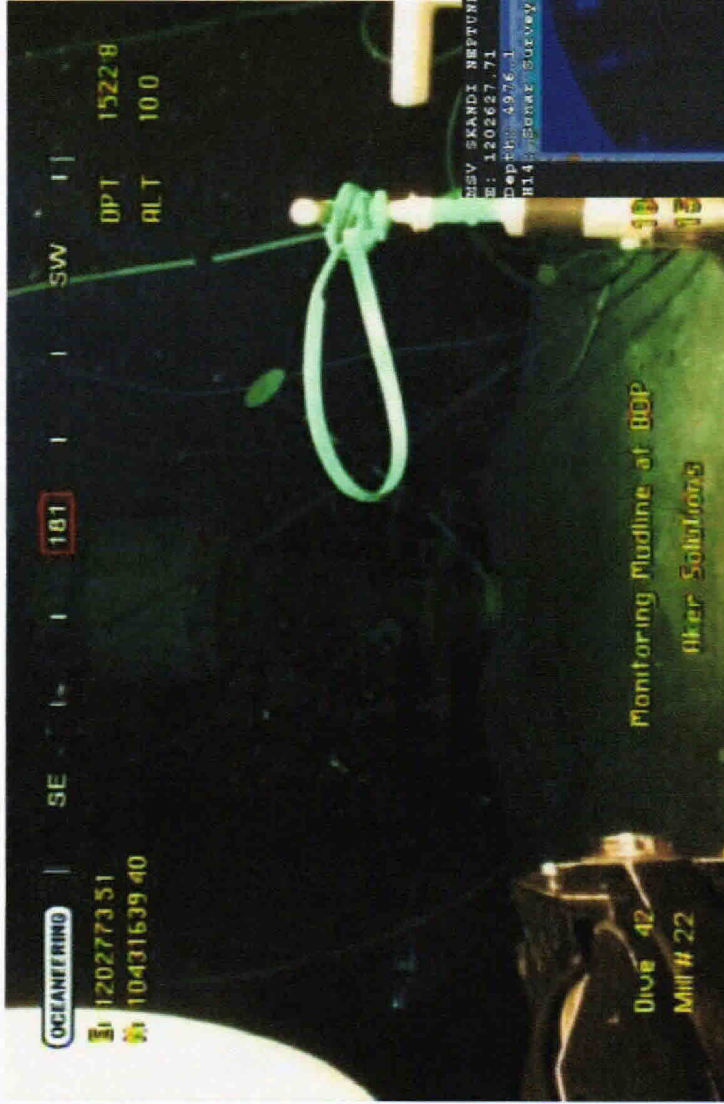


Temperature

- @17:45hr yesterday = 39.8deg F
- @ 13:30hr today = 40.2 deg F
- Ca. 8 deg f lower than the flowing case earlier today
- Logged every 30mins (40 readings to date)



Seabed Monitoring: Visual and Sonar



No visual or acoustic anomalies

Interpretation & Discussion

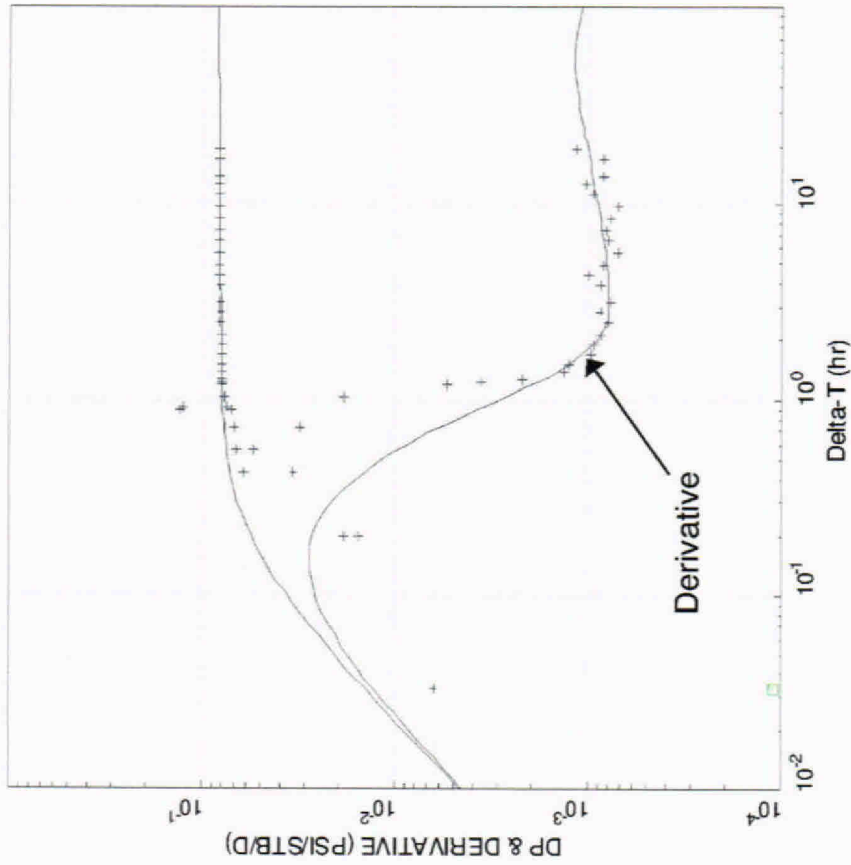


Negative Test Indicators (as agreed in protocol with the UAC):

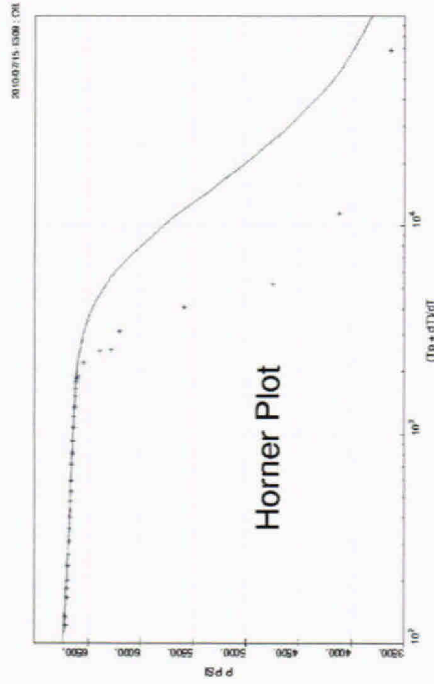
- Pressures plateau less than 6000 psi
- Pressure transient or “breakover”
- Visual or sonar evidence of broaching, especially near wellbore
- Observed leak at BOP system

Interpretation

Single Phase Model of Well



- Model uses radial composite model
- $C_r = 6 \times 10^{-6} \text{ psia}^{-1}$
- OOIP = 111 mmstb
- mid-case rate
- Limited or No Aquifer

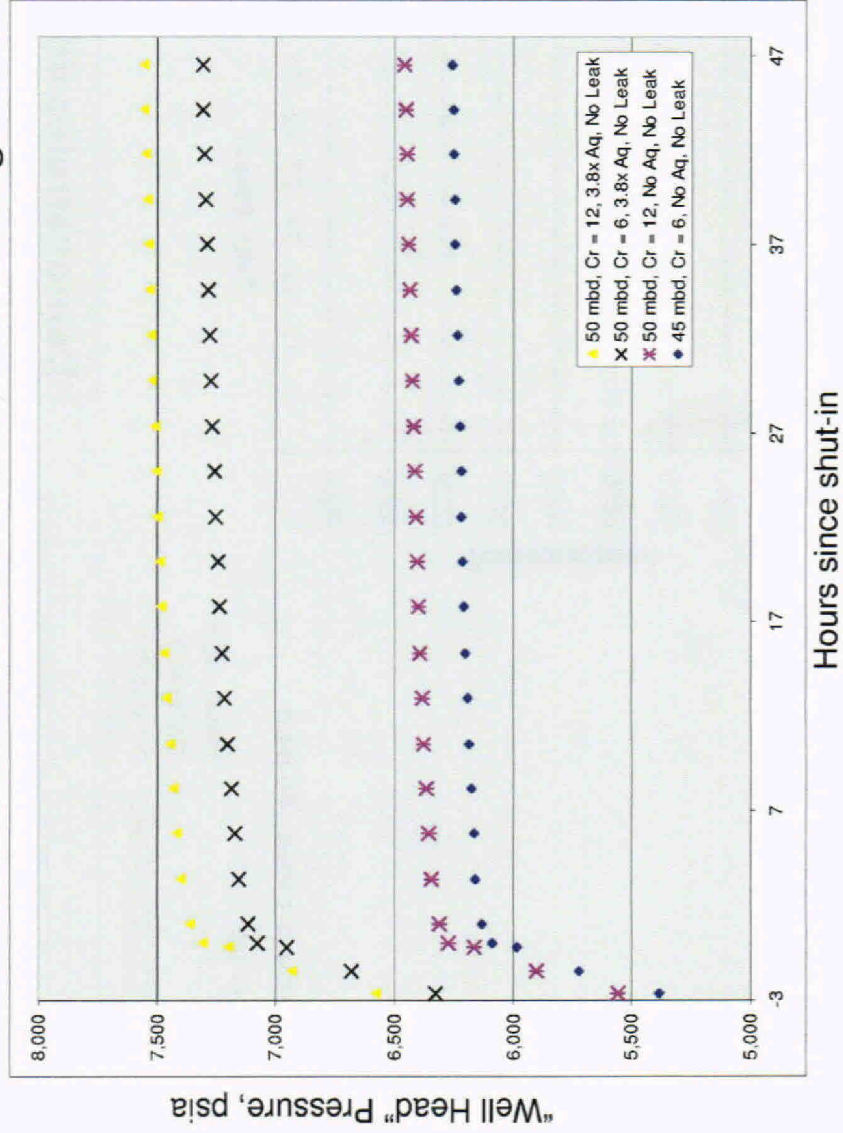


Interpretation



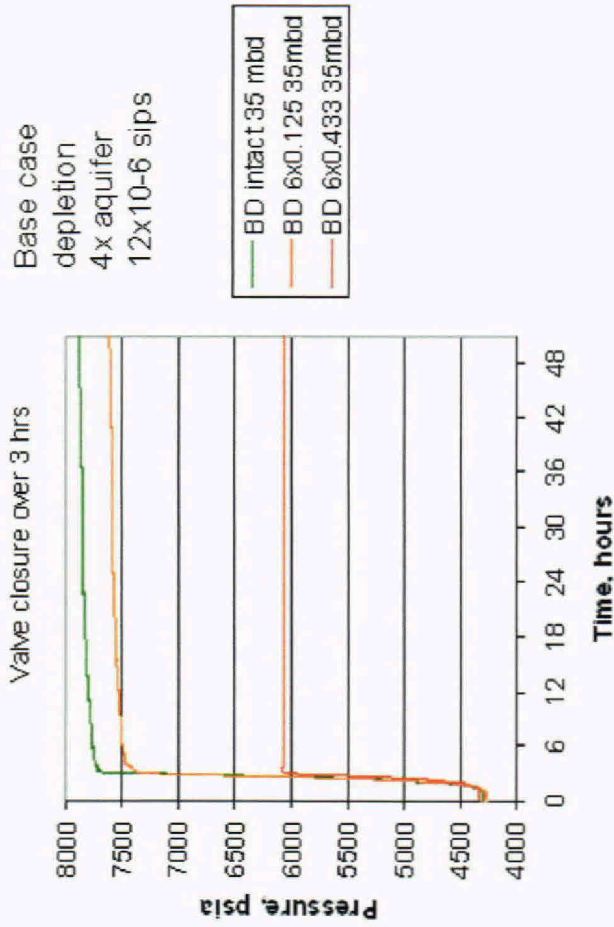
Demonstrates that observed pressures are in line with reasonable cases modeled

Scenario Pressure Trends - Modeling



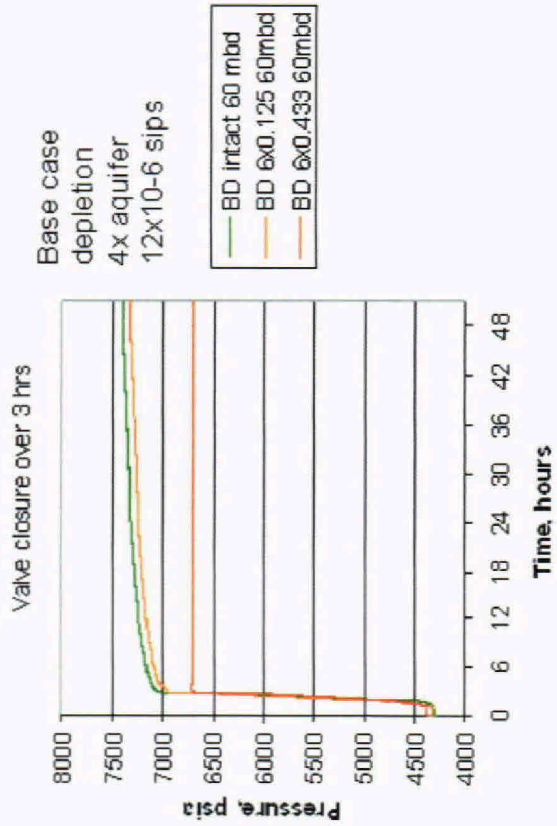
Interpretation

Comparison across cases - 35 mbd



Demonstrates difference in trend for large leak vs. pressure build up.

Comparison across cases - 60 mbd



Forward Plan



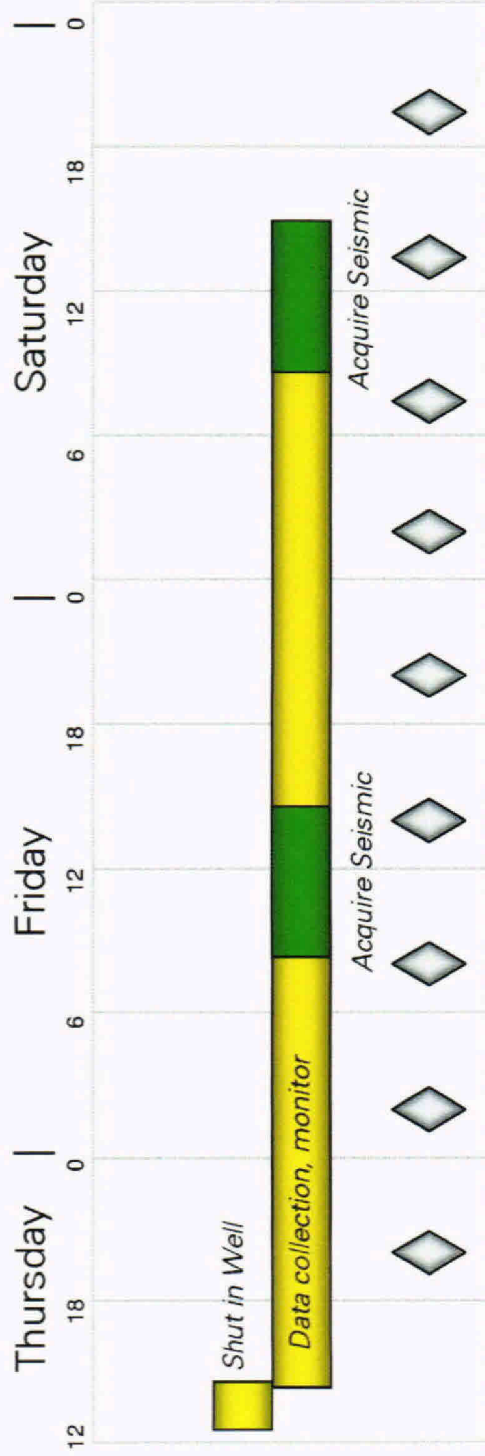
- Update derivative plan
- Analysis of seismic data
- Acquire additional seismic data
- Hydrophone unit
- Ryan Chouest 5mile radius of site to do 38 KHz monitoring;
- NOAA Vessel Pisces has been monitoring in 3 blocks to the north west corner at a 2.5mile distance for the last 24hrs. To complete tests at the 1 mile radius today.

Recommendations



- Continue Well Integrity Test as per guidelines
- Repeat Seismic tomorrow

Plan Forward

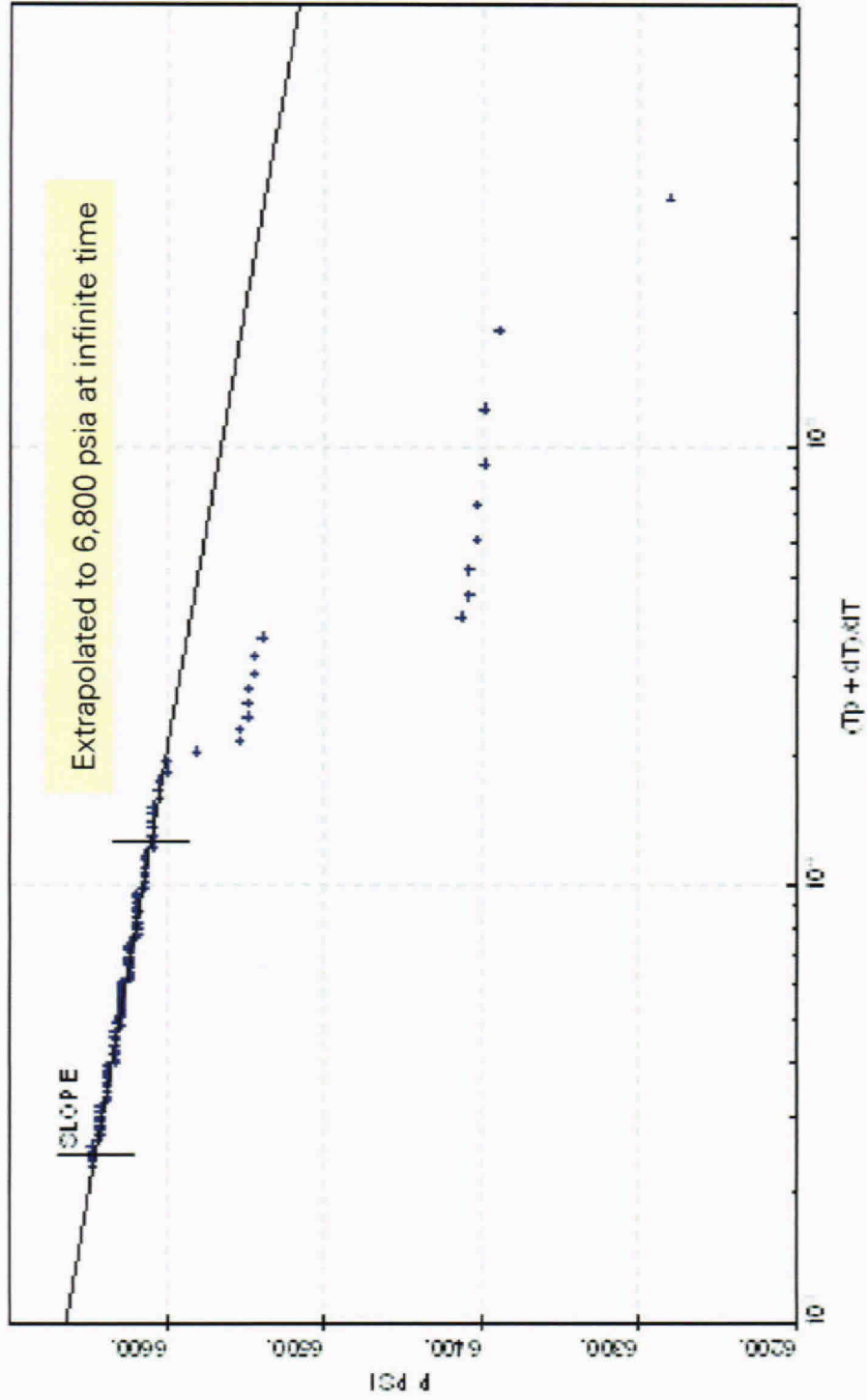


= Review Data & Recommend Forward Plan

Back-up



Horner Plot





Seismic Offset Line Locations

