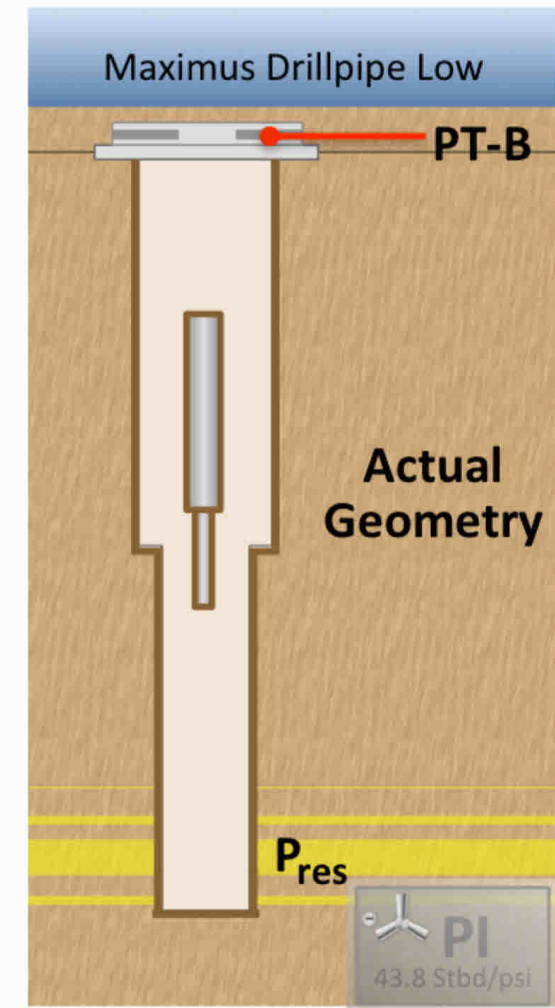
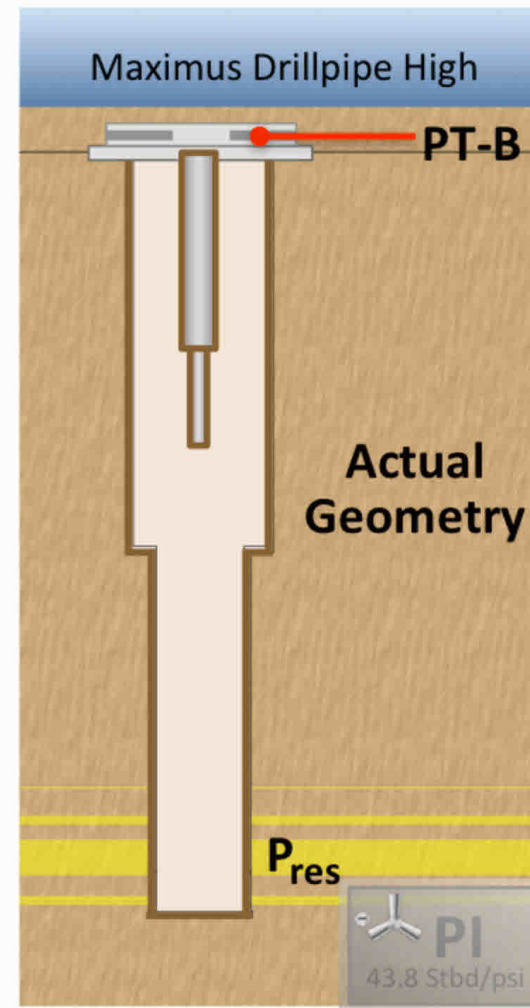


# Effect on Dr. Griffiths's Flow Rate Trend when Dual Flow Paths are Included Instead of Constant Kwell



VERSUS



Griffiths concludes flow will **decrease** from May 8 to July 15

In fact, **flow increases** from May 8 to July 15, because of multiphase effects and drillpipe

Here, **flow still increases (slightly)** from May 8 to July 15, because of multiphase effects and drillpipe