

Enterprise BOP: Choke and Kill Line Hoses

DAILY REPORT #3 \ Job

A mode 2 EDS was attempted. A shear ram was closed, the upper moonpool stingers are retracted and the position. During the EDS, fluid shear ram bannet. The piston seal process of procuring the proper

Further testing of the control system that the casing shear ram high pressure quarter inch pod valve in the yellow continued. The casing shear ram was ongoing which included the event logger print out of the 1.5 Seconds using 28 gallons total fluid

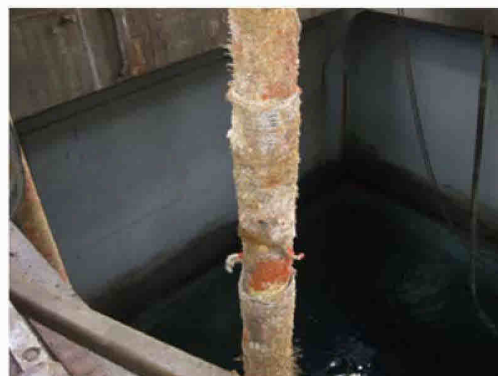
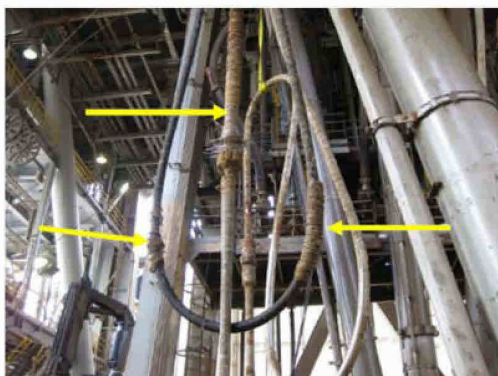
The Coflexip type hoses in the moonpool were observed to have damage to the outer protective sheath, and will need to be replaced.



Figure 1: Damaged moonpool hoses

The riser on deck was spot checked. Several buoyancy module thru the thrust collar nuts and bolts were

The Coflexip type hoses in the moonpool were visually inspected. All hoses in the moonpool were observed to have damage to the outer protective sheath, and will need to be replaced.



CONFIDENTIAL

BP-HZN-2179MDL07807485
TREX 011677.0104