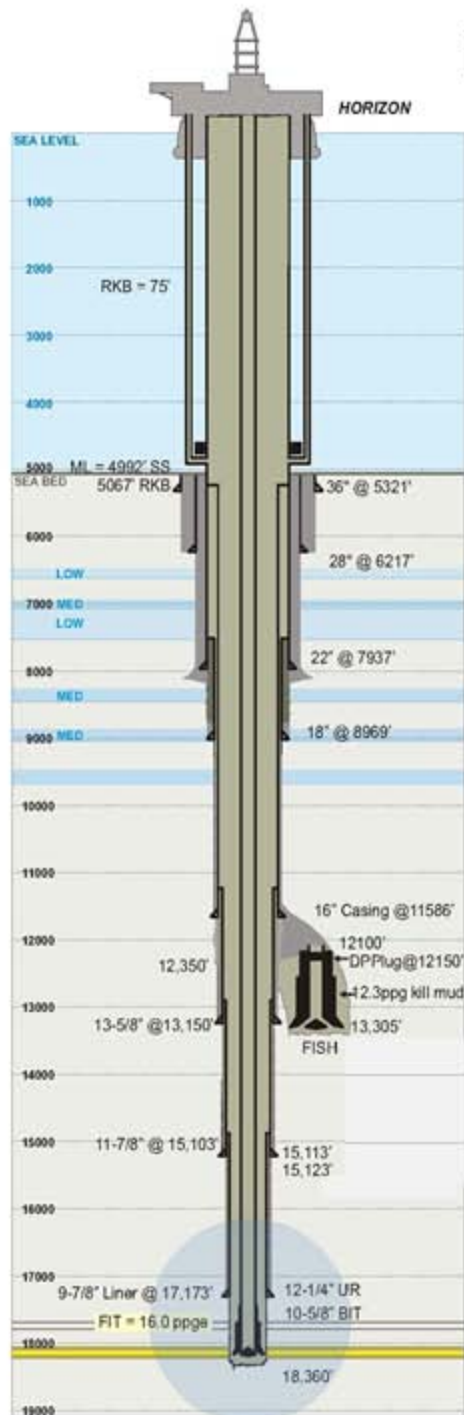


# Drilling Summary For Last Hole Section Below 9-7/8" Liner



## 4/1/2010

Tested Liner

Weighted up to 14.3 ppg.

MMS inspected rig. No INCs issued.

## 4/2/2010

Drilled cement to 17,173' and 10' of new formation; Conducted FIT.

FIT=16.0 ppg (PWD=16.2 ppg)

Drilled to 17,634' and Weighted up to 14.5 ppg.

## 4/3/2010

Drilled to 17,761 with 14.5 ppg mud; noted 134 bbl mud loss.

Shut-in well and checked for flow--Hole Ballooning was Indicated;

Began treating with Loss Circulation Material (LCM);

Total mud loss over 24 hrs was 233 bbl. (<10 Bbl/hr);

Measured Pore Pressure using Geo Tap:

Drilled to 17,835' and Logged up with Sperry MWD to 17,745';

Took GeoTap at probe depth of 17,723';

Indicated Pore Press Gradient =14.16 ppg (Surface EMW= 13.9 ppg)