

This file was produced natively.

Modified: 5/7/2010 02:59:46 PM CDT

Size: 1,859KB (1,902,592 bytes)

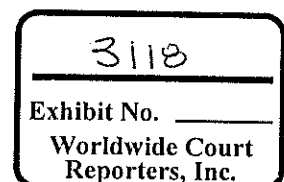
DocExt: ppt

DREORIGINALNAME: \\mpdpv3store01\01914-
032\EXT\Batch0741\Source\07410001\72f\72f255f69f229ff2b79bf877c6691a0b\0000034
02264.ppt

CUSTODIAN_NAME: Faul, Ronnie

MD5: b41117ec5029451b2374cb20ea920903

Comments: UNSUPPORTED OR EXCLUDED FILE TYPE



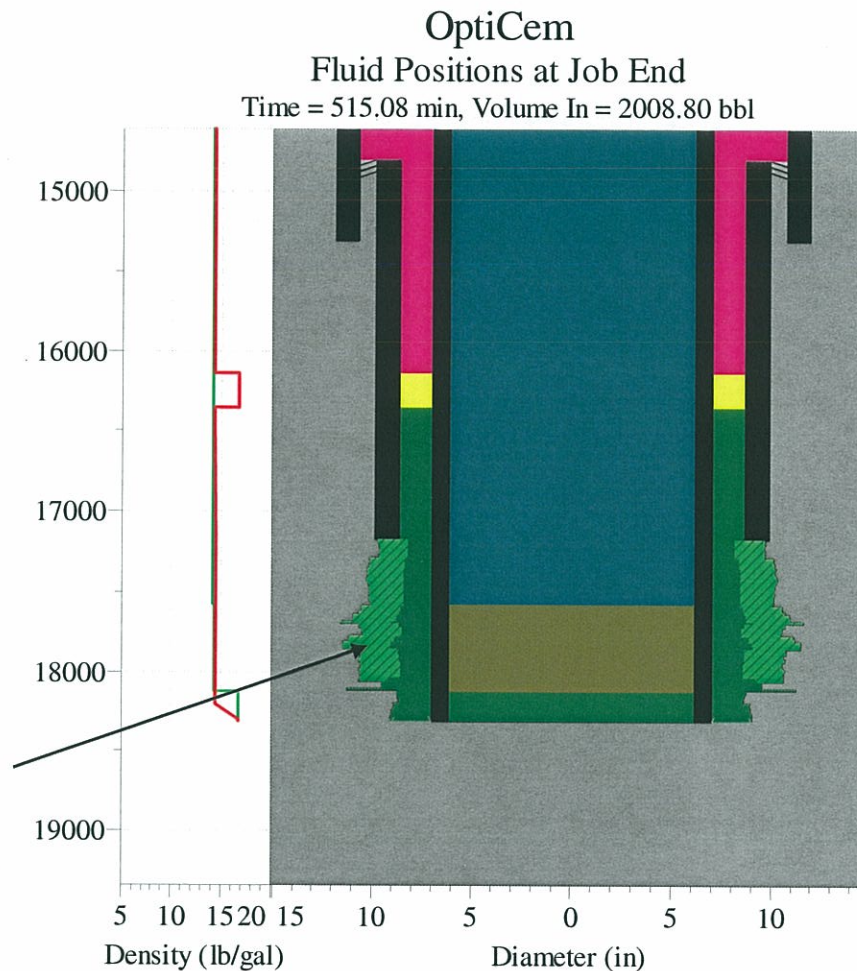
HIGHLY CONFIDENTIAL

HAL_0570128

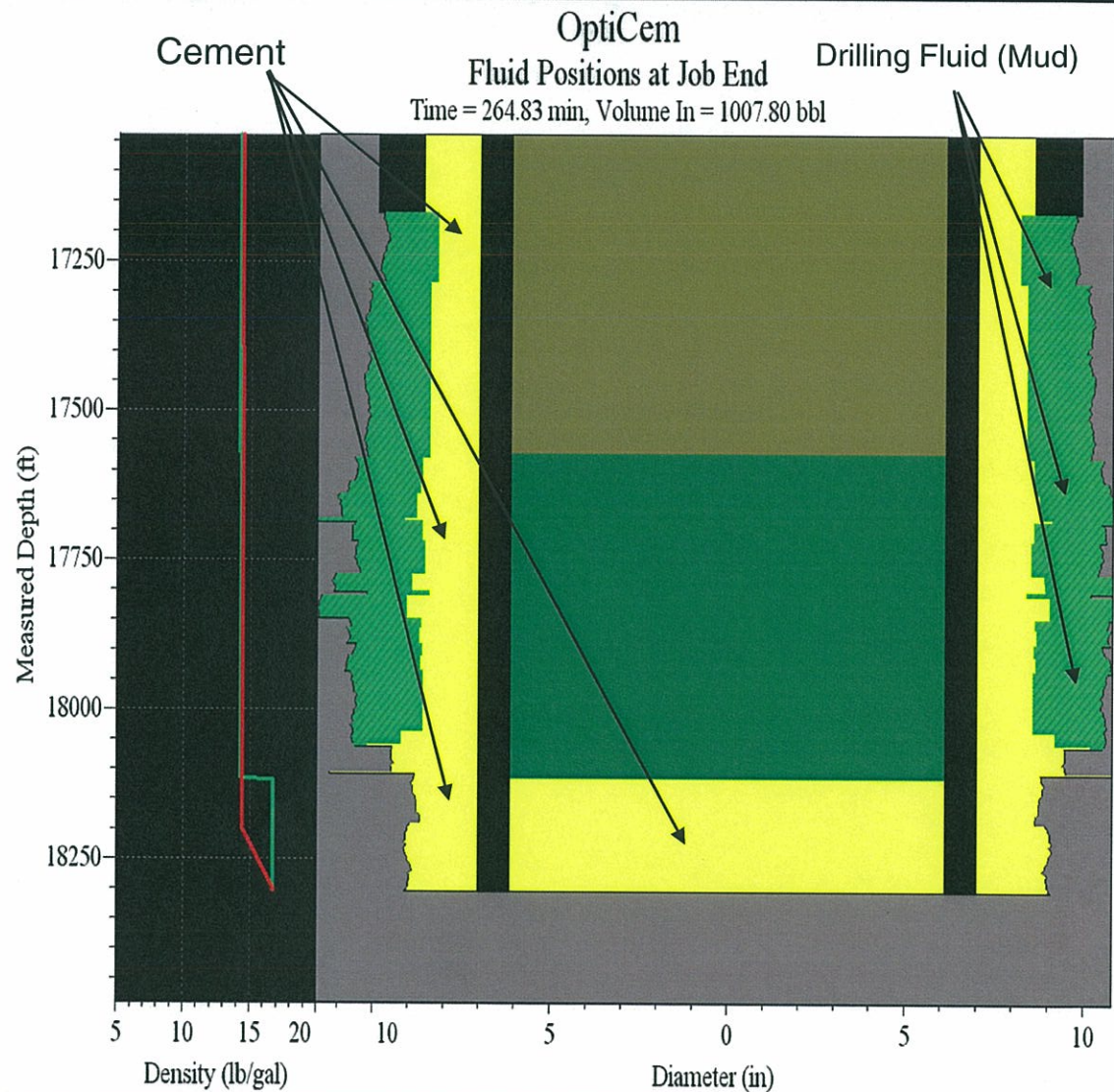
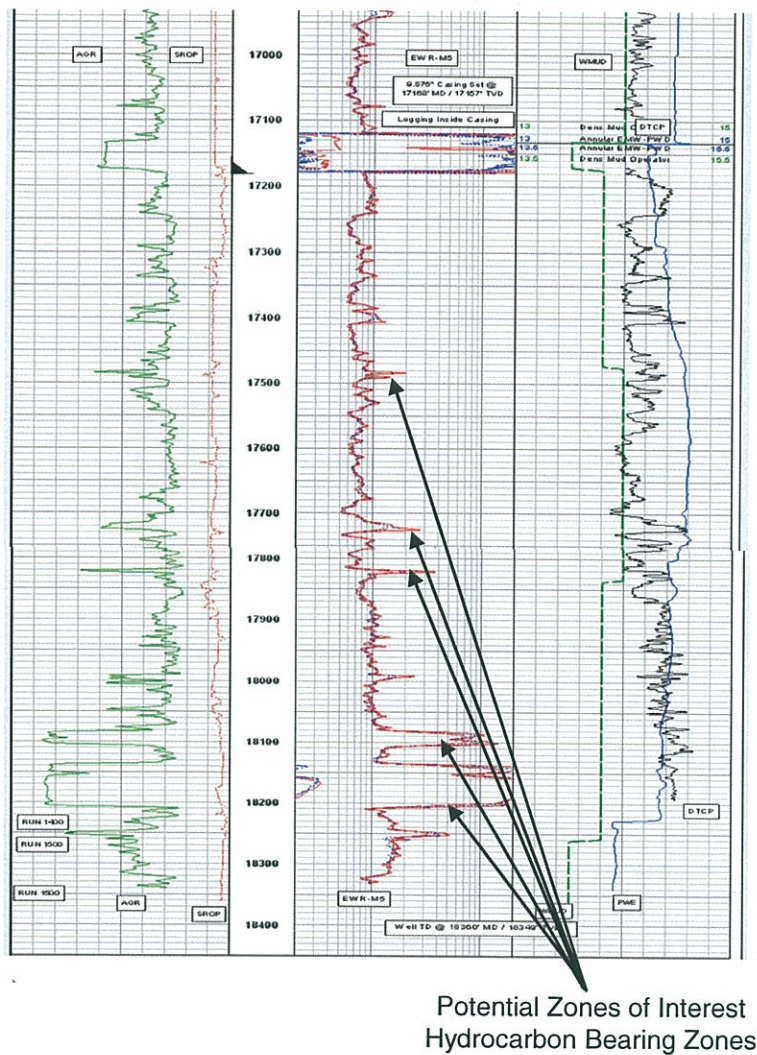
■ Top Of Cement - Estimated

- Objective of the TOC was 17,300 ft.
- Estimated TOC is 16353 based on simulations relating to the execution of the job with 6 centralizers
- Height of cement definitely indicates that cement channels would occur.
- The previous shoe is stated as 17,168 ft.

Light Green indicates by-passed mud, which is channeling of the cement.



Comparison of LWD Logs and Potential Coverage of Cement Across Zones of Interest



■ Top of Cement - Designed

- Objective of the TOC was 17,300 ft.
- TOC based on design was 17,259 ft based on simulations relating to the execution of the job with 21 centralizers.
- The previous shoe is stated as 17,168 ft.

