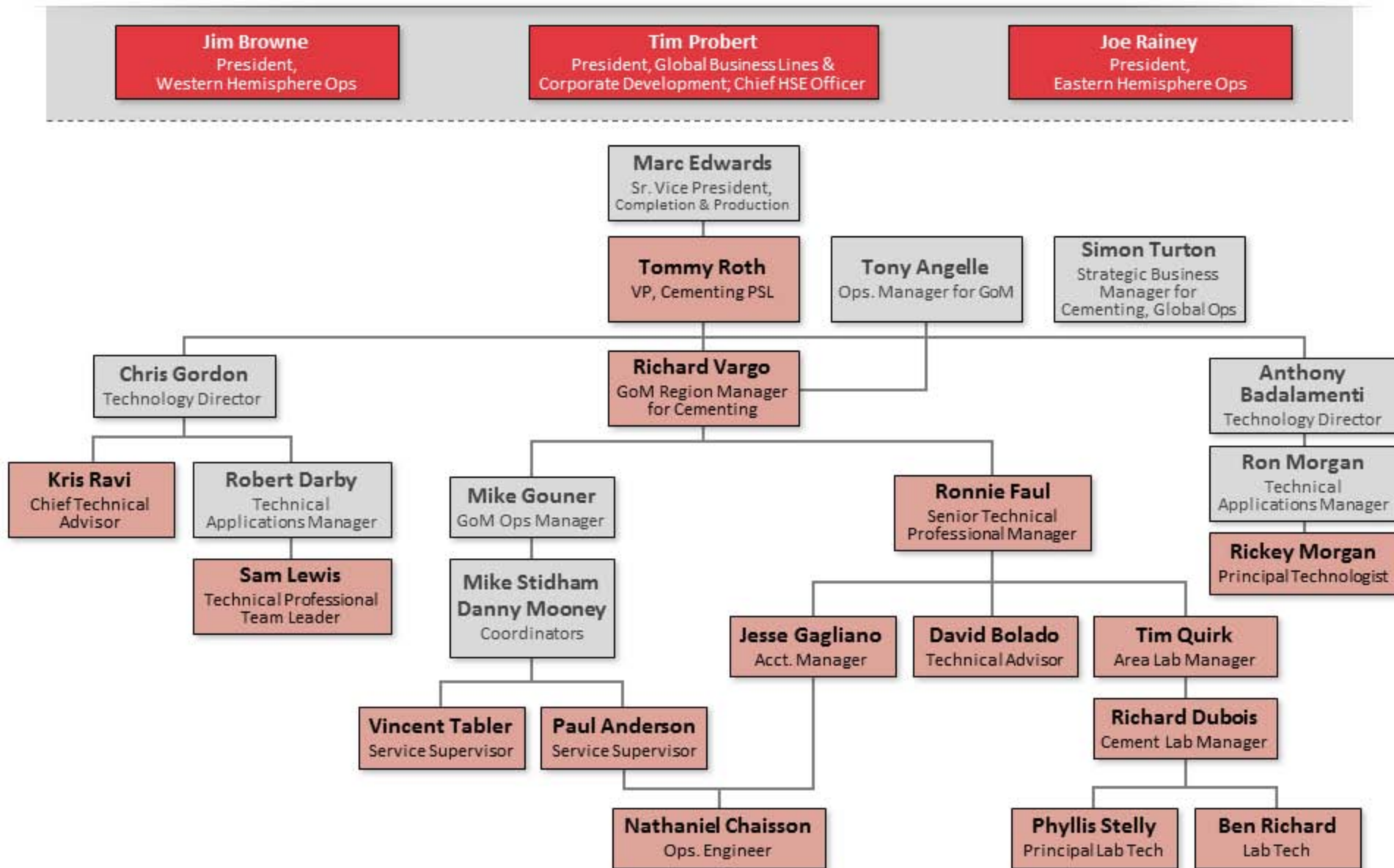


Halliburton Employees

As of April 20, 2010



Source: Roth Dep. at 82:19-83:1, 784:16-23; Vargo Dep. at 435:14-21, 19:3-21:12; Lewis Dep. at 78:25-79:12, 74:21-76:16, 74:16-20, 105:25-106:1; Morgan Dep. at 16:2-11, 73:19-74:6; Faul Dep. at 143:4-15, 314:19-315:21, 24:2-13, 312:6-18, 118:7-16; Quirk Dep. at 29:24-30:22, 33:1-13, 36:7-20; Serio Dep. at 81:3-14, 217:4-218:3; Stelly Dep. at 10:1-24, 23:5-12; Richard Dep. at 15:9-16, 11:22-12:1;

Anderson Dep. at 174:20-23, 11:24-25; Chaisson Dep. at 26:1-27:13; Tabler Dep. at 11:25-12:11, 15:4-12, 18:24-19:3, Probert Dep. 23:16-22; 312:21-24; TREX 000970

D 4377A