

To: Hafle, Mark E; Guide, John; Cocalles, Brett W; Walz, Gregory S; Prewett, Harry; Burns, Tim A
Subject: FW: HAL and SLB Lost Circulation Materials
Importance: Normal
Attachments: 734.ZIP; 734 Brochure.ZIP; SLB CemNET IP.pdf; CemNET Brochure.ZIP
Attachments: 734.ZIP; 734 Brochure.ZIP; SLB CemNET IP.pdf; CemNET Brochure.ZIP

All,

I'm looking to find the most effective product for loss circulation during our production cement job. Attached are 3 of our options(Welllife 734, CemNET, TurfFiber 594), Erick recommends CemNET as he has pumped this more with his Schlumberger background, but thinks the Welllife 734 is also a good product. Please let me know your thoughts before I pursue getting any of them to the rig. Per my conversations with Jesse and Erick all of them can be mixed offshore, but the CemNET probably will require an extra Schlumberger hand to be on the rig.

Thank You,
Brian Morel

From: Cunningham, Erick
Sent: Friday, April 09, 2010 6:50 PM
To: Morel, Brian P
Subject: HAL and SLB Lost Circulation Materials

Brian,

IP and Product Brochures for both HAL and SLB Products

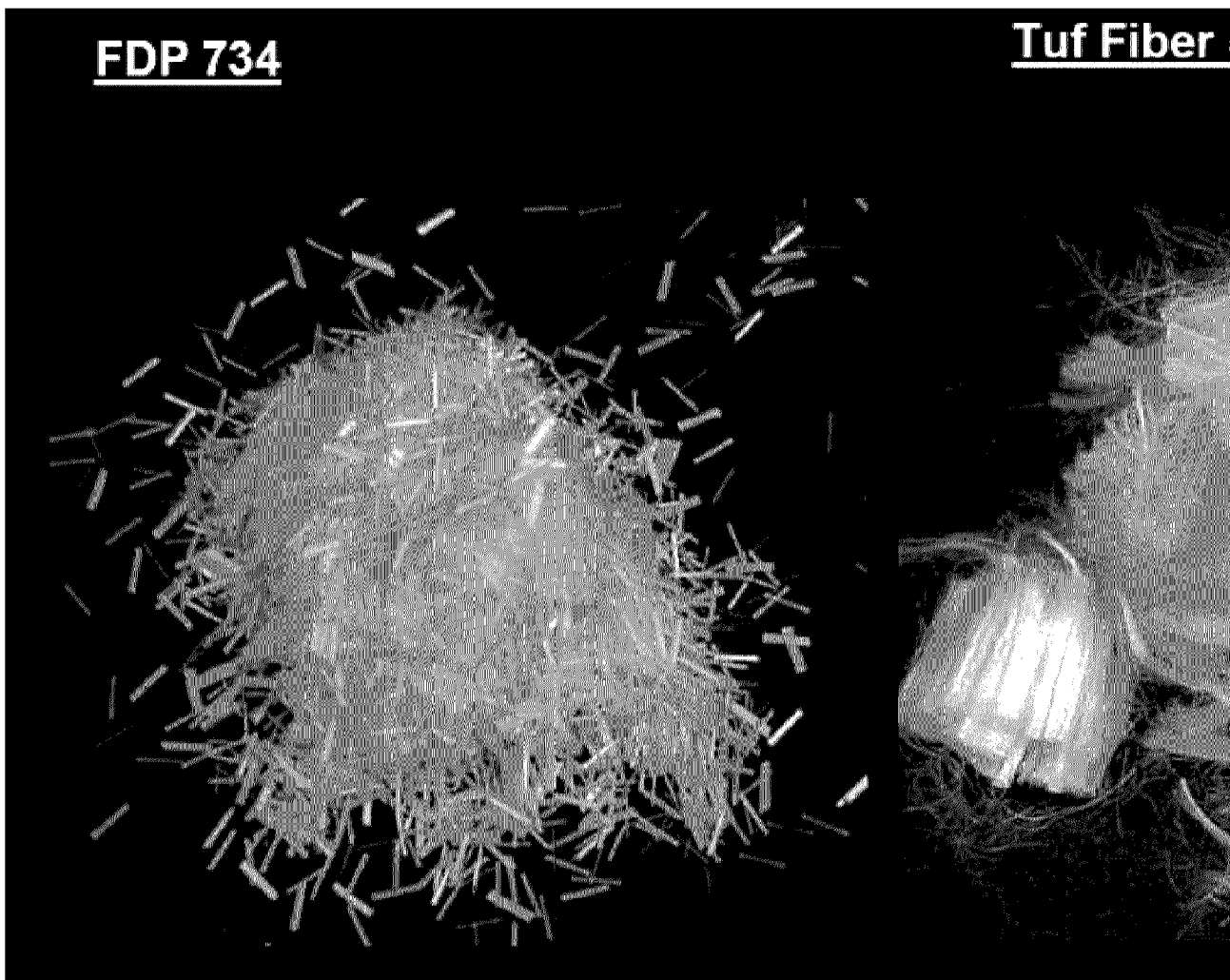
Regards.
Erick

From: Jesse Gagliano [mailto:Jesse.Gagliano@Halliburton.com]
Sent: Friday, April 09, 2010 6:18 PM
To: Morel, Brian P
Subject: Fiber info

Below is the info on the WellLife 734 & Tuf Fiber 594. Both can be added to the slurry on the downhole side. We have used WellLife 734 on the rig several times and we have not used Tuf Fiber 594 yet on the Horizon. If we use Tuf Fiber 594 we have to make sure our pump rates stays at a minimum of 5 bpm to prevent from plugging up the pumps. We currently do not have Tuf Fiber 594 in Fourchon, but have some located in TX. The bulk plant is calling to verify that the product is not on hold for a customer and to see if it can be released to us. If it can be released then it will take 4 to 5 days to get it to Fourchon. Let me know if you have any other questions. Thanks!!

FDP 734

Tuf Fiber 4



	FDP 734	Tuf Fib 594
Composition	Glass	Organic polym
Length	3 mm or 1/8"	13 mm or 1/2"
Stiffnesss	Brittle	Flexible
Suggested % bwo of solids	< 1-2%	<0.75%

Jesse Gagliano
 Halliburton Energy Services
 Account Representative - Cementing
 Office - 281-366-6106
 Cell - 281-635-4798
 Fax - 713-583-9700

E-mail - jesse.gagliano@halliburton.com