

---

**From:** Hafle, Mark E [Mark.Hafle@bp.com]  
**Sent:** Sunday, March 07, 2010 2:20 PM  
**To:** Jesse Gagliano  
**Cc:** Morel, Brian P; Cocales, Brett W  
**Subject:** Macondo 11-7/8 or 11-3/4 Expandable  
**Attachments:** Macondo\_MC 252\_1 \_Schematic\_Rev14.0\_03072010.xls

Jesse, We need to know how much 11-7/8 we can run and still get cement lift on the production string of 9-7/8". Actuals in green. It is very likely that 13-5/8 will be set at 13,500 or shallower.

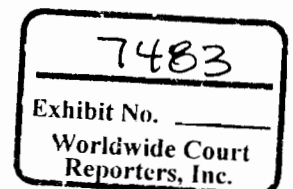
Attached file has both cases in schematic form

<<Macondo\_MC 252\_1 \_Schematic\_Rev14.0\_03072010.xls>>

Can we put foam cement across the zone to be perforated during the completion? Not sure if this is done on other wells with close PP/FG

Regards,

**Mark Hafle**  
Drilling Engineer  
BP Deepwater GoM  
281-366-4237 (o)  
281-687-8216 (m)



# PRODUCED IN NATIVE FORMAT

BegDoc#: HAL\_0005083

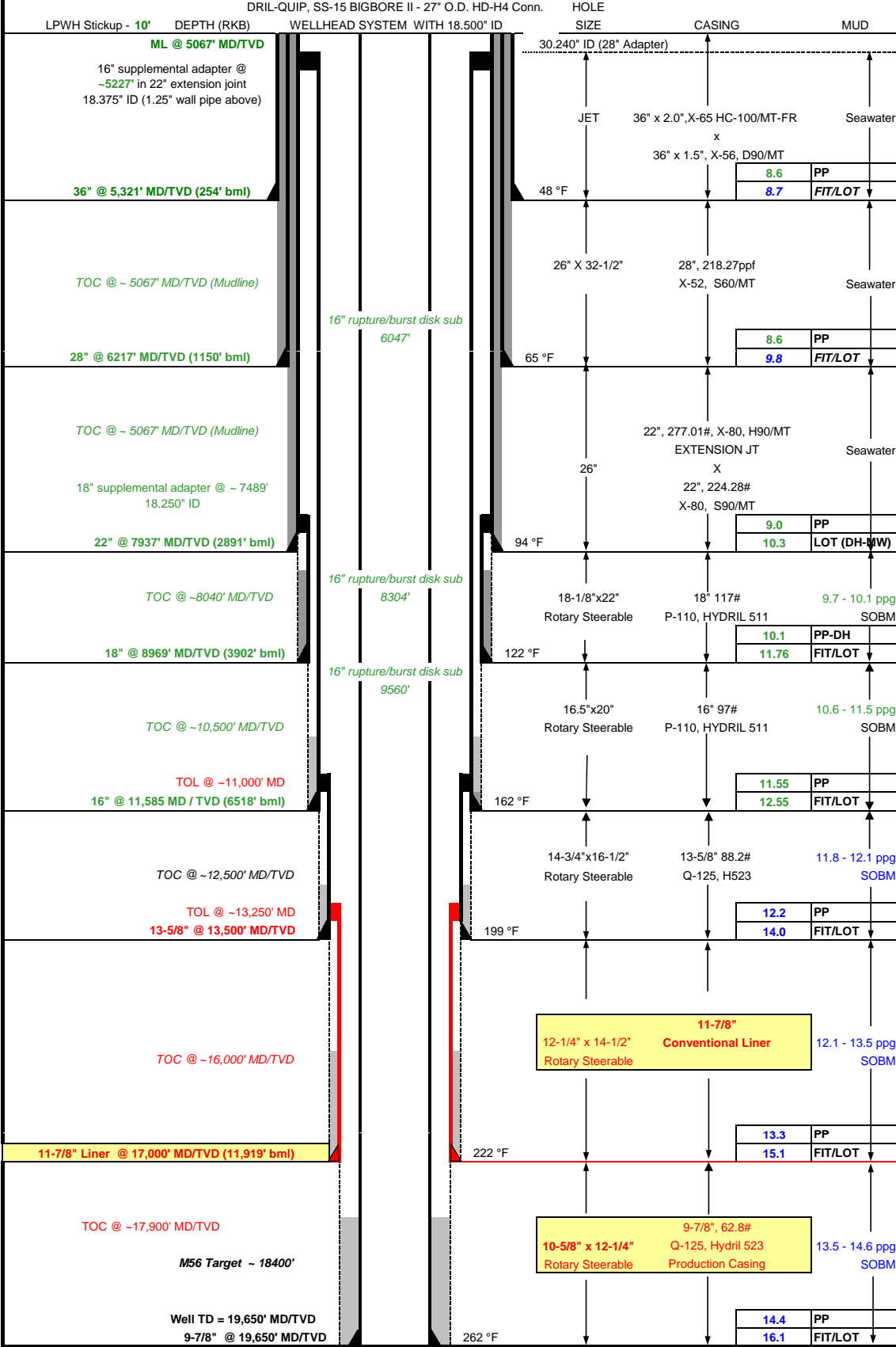
Filename: Macondo\_MC 252\_1  
\_Schematic\_Rev14.0\_03072010.xls

# PRODUCED IN NATIVE FORMAT

# BP GoM Deepwater Exploration

## Macondo ( Basis of Design ) - With 11-7/8" Conventional Liner / Versaflex Hanger

OPERATOR: <b>BP</b>	PARTNER: <b>Anadarko, MOEX</b>	DATE: <b>3/7/2010_Rev 14 (16" is set at 11,585')</b>
WELL NAME: <b>MC 252 #1, MACONDO PROSPECT, OCS-G-32306</b>	PTD: <b>19,650' MD/TVD</b>	
FIELD / PROSPECT: <b>WILDCAT</b>	AREA: <b>OFFSHORE</b>	STATE <b>LA</b>
SURFACE LOCATION: <b>X=1,202,803.88 Y=10,431,617.00</b>	PBHL: <b>X=1,202,803.88 Y=10,431,617.00</b>	RIG: <b>Transocean Deepwater Horizon</b>
OBJECTIVE ZONE(S): <b>M56</b>	DRIL-EQUIP, SS-15 BIGBORE II - 27" O.D. HD-H4 Conn. HOLE	

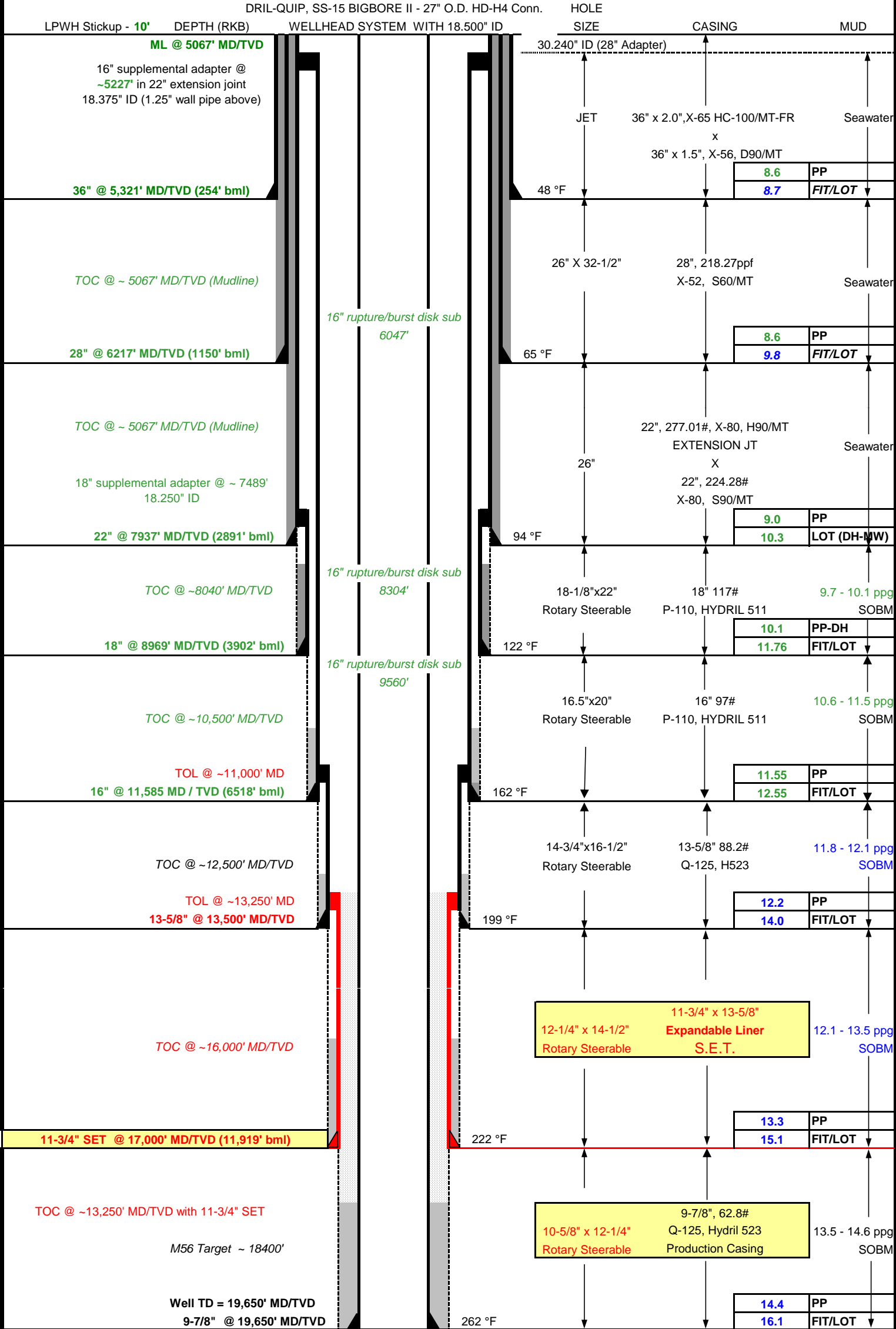


Jesse, We need to know how much 11-7/8 we can run and still get cement lift on the production string of 9-7/8". Actuals in green. It is very likely that 13-5/8 will be set at 13,500 or shallower.

# BP GoM Deepwater Exploration

## Macondo ( Basis of Design ) - With 11-3/4" x 13-5/8" Expandable Liner

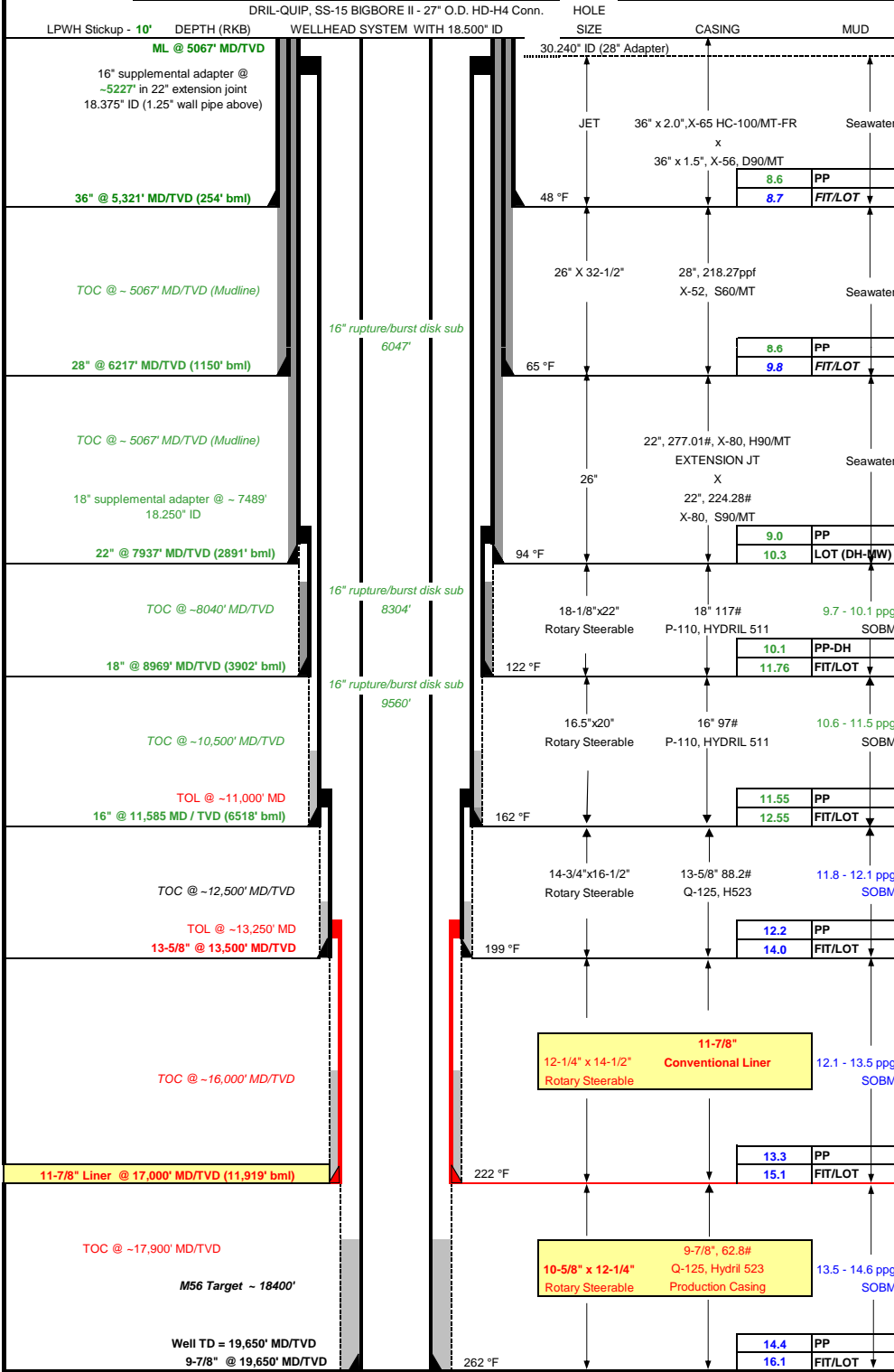
OPERATOR: <b>BP</b>	PARTNER: <b>Anadarko, MOEX</b>	DATE: <b>3/7/2010_Rev 14 (16" is set at 11,585')</b>
WELL NAME: <b>MC 252 #1, MACONDO PROSPECT, OCS-G-32306</b>	PTD: <b>19,650' MD/TVD</b>	
FIELD / PROSPECT: <b>WILDCAT</b>	AREA: <b>OFFSHORE</b>	STATE <b>LA</b>
SURFACE LOCATION: <b>X=1,202,803.88 Y=10,431,617.00</b>	PBHL: <b>X=1,202,803.88 Y=10,431,617.00</b>	RIG: <b>Transocean Deepwater Horizon</b>
OBJECTIVE ZONE(S): <b>M56</b>	DRIL-QUIP, <b>SS-15 BIGBORE II - 27" O.D. HD-H4 Conn.</b>	HOLE SIZE: <b>30.240" ID (28" Adapter)</b>



# BP GoM Deepwater Exploration

## Macondo ( Basis of Design ) - With 11-7/8" Conventional Liner / Versaflex Hanger

OPERATOR: **BP** PARTNER: Anadarko, MOEX DATE: **3/7/2010\_Rev 14 (16" is set at 11,585')**  
 WELL NAME: **MC 252 #1, MACONDO PROSPECT, OCS-G-32306** PTD: **19,650' MD/TVD**  
 FIELD / PROSPECT: **WILDCAT** AREA: **OFFSHORE** STATE **LA** RF ELEV: **75' (Horizon)** WD: **4992'**  
 SURFACE LOCATION: **X=1,202,803.88 Y=10,431,617.00** PBHL: **X=1,202,803.88 Y=10,431,617.00**  
 OBJECTIVE ZONE(S): **M56** RIG: **Transocean Deepwater Horizon**



Jesse, We need to know how much 11-7/8 we can run and still get cement lift on the production string of 9-7/8". Actuals in green. It is very likely that 13-5/8 will be set at 13,500 or shallower.