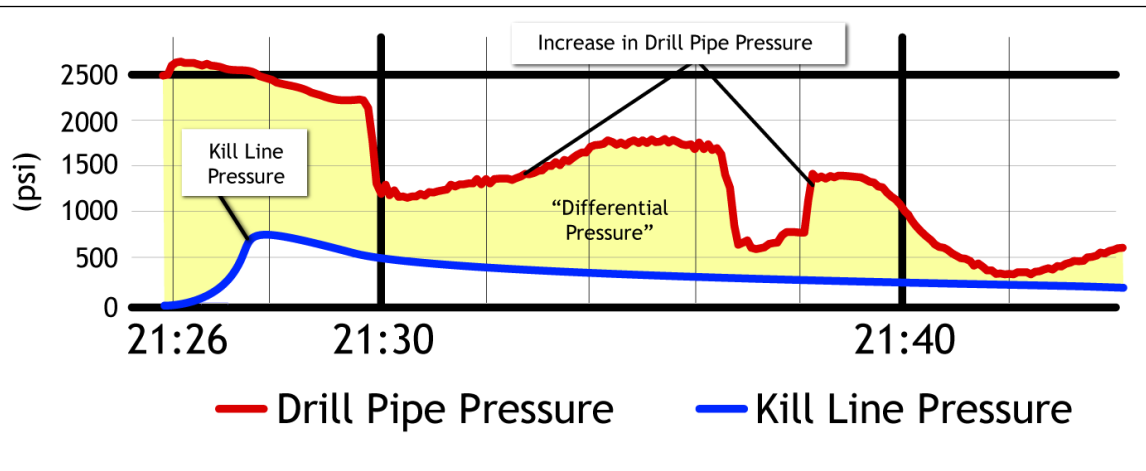


Figure 4.7.11. Drill pipe pressure and kill line pressure anomalies from 9:27 to 9:40 p.m.



Sperry-Sun data/TrialGraphix

At 9:27 p.m., kill line pressure reached approximately 800 psi. From 9:30 to 9:35 p.m., while the pumps were shut down, drill pipe pressure increased by approximately 550 psi. After the crew attempted to bleed it down, drill pipe pressure again shot up, at 9:38 p.m., by approximately 600 psi. Each of these anomalies was a sign that fluids were moving in the well. Despite observing those signs, the crew did not yet shut in the well.