



DAILY PFG REPORT
 Mississippi Canyon Block 252 #1 ST00 BP01
 OCS-G-32306
 API-60-817-4116901
 Macondo Exploration Well



WELL INFORMATION

Rig : Horizon	RT – MSL : 75 ft	Water Depth : 4992 ft	RT – Mudline : 5067 ft
---------------	------------------	-----------------------	------------------------

OPERATIONS SUMMARY

Drilled.

MD	TVD	Progress (24 hr)	Hole size	Current formation	
18088	18077	327	8 1/2" X 9 7/8"	Calcareous Shale/Siltstone	
Sensor Distances FPWD: 85.07'		Sonic: 67.60'	PWD: 34.12'	GR: 34.76'	Res: 42.89'

PORE PRESSURE SUMMARY

Max PP: Open hole (18088ft MD)	14.2 ppg (13.9 shale)	PP Bottom hole	14.2 ppg	Last FIT: 17,157 ft TVD	15.98 ppg (surf) 16.22 ppg (dh)
Surf MW:	14.3 ppg	ECD:	14.89ppg	ESD min/ ESD max: (18036 MD)	14.53/14.77 ppg

Resistivity Analysis: Resistivity model adjusted to 14.14 ppg GeoTap and 15.0 ppg sand FG. No increasing pore pressure trend noted after the zone from 17300-17500 ft TVD

Sonic Analysis: Sonic remained erratic and the adjustments from town were minimal. Sonic model adjusted to 14.14 ppg GeoTap and 15.0 ppg sand FG. No increasing pore pressure trend noted after the zone from 17300-17500 ft TVD

Additional Observations: High gas noted from zones where ballooning flow back occurred. No cavings noted.

GeoTap:	TVD	PPG
	17,712.5'	14.15
	17,713.0'	14.16
	17,712.5'	14.14

Expectation is that the pore pressure will increase to 14.0/14.4 at approximately 18500 TVD based on the most likely curve. Neither sonic nor resistivity currently indicate increasing pressure.

Assumption is that a 0.3 centroid remains between the sand and the shale pressures. The current 14.2 ppg is based on rounding up the GeoTap pressures. The current 13.9 ppg shale pressure is based on the pore pressure which would correspond to a sand/marl fracture gradient of 15.0 ppg using a PR of 0.33 – 0.35.

Pressure Analyst: Paine

Date: Apr. 4, 2010

8186

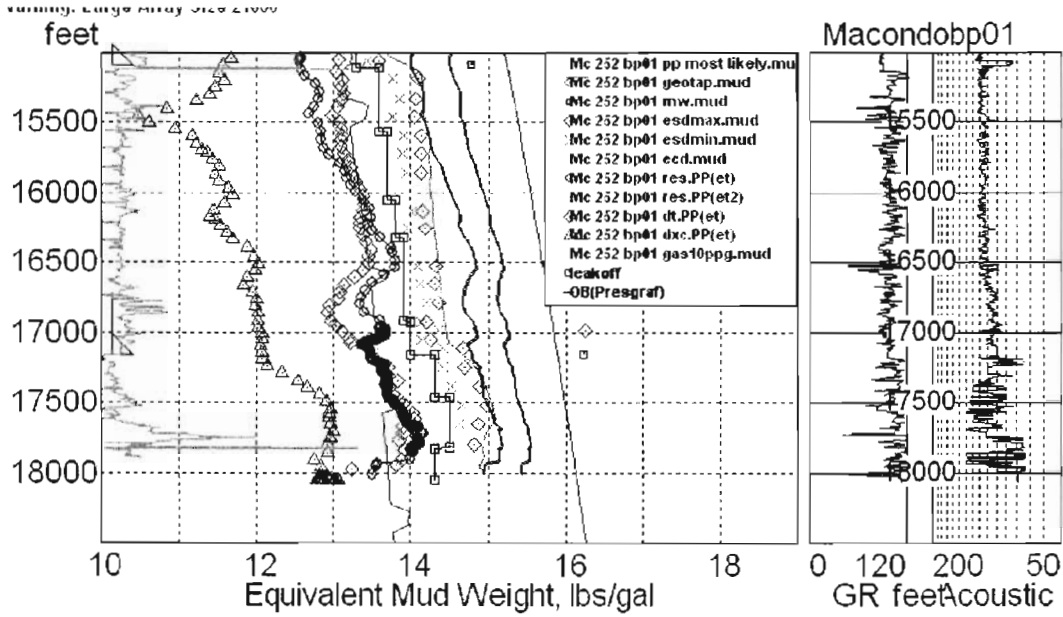
Exhibit No. _____
 Worldwide Court
 Reporters, Inc.



DAILY PPFG REPORT
 Mississippi Canyon Block 252 #1 ST00 BP01
 OCS-G-32306
 API-60-817-4116901
Macondo Exploration Well



DAILY PRESSURE PLOT:





DAILY PPFG REPORT
Mississippi Canyon Block 252 #1 ST00 BP01
OCS-G-32306
API-60-817-4116901
Macondo Exploration Well



Cuttings/Cavings Analysis:

Cuttings and LCM on the shakers. No cavings.

Cuttings/Cavings Photograph :

