

Three of the ten-year trend lines presented in Figure 4 were lower in each case Dr. Tunell apparently means equation. However, Tunell were computed. Consequently, comparison becomes a self-fulfilling

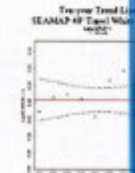


Figure 4. Ten-year trend line for White Shrimp from Tunell's expert report. 95% confidence interval.

Take the case of the trend line for Atlantic croaker between 2004 and 2014. Tunell dismisses the trend line by comparing them to a baseline should be determined.

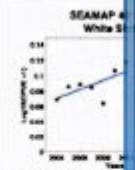
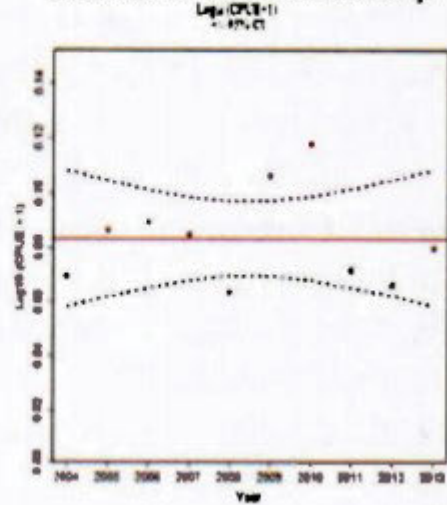
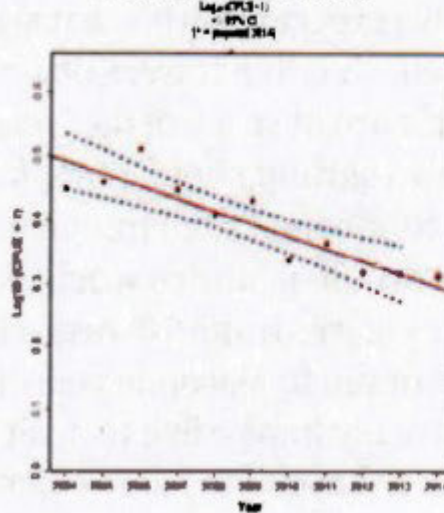


Figure 5. Here we compare the trend lines computed for White Shrimp and Atlantic croaker. The trend lines are computed for comparison.

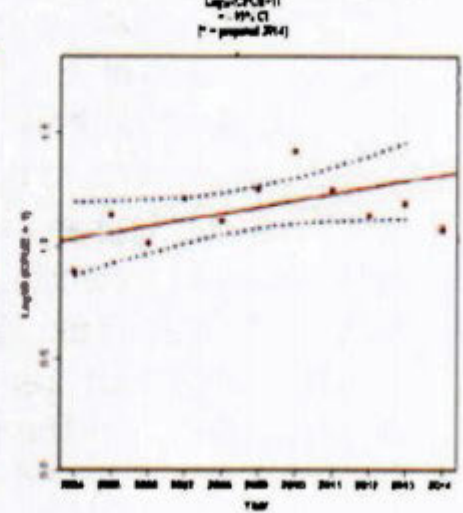
Ten-year Trend Line  
SEAMAP 40' Trawl White Shrimp



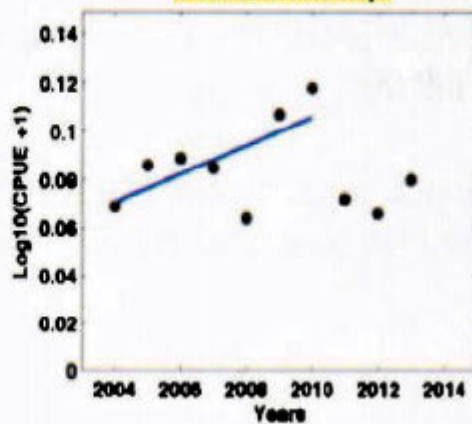
Ten-year Trend Line  
LDWF 16' Trawl Blue Crab



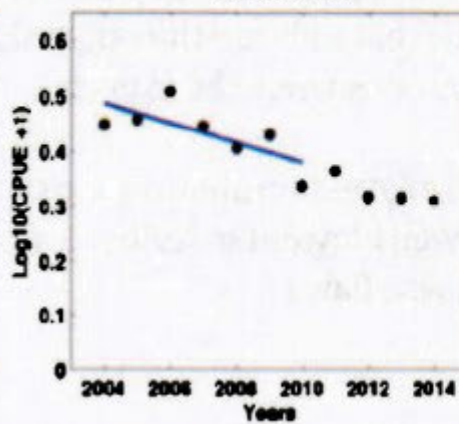
Ten-year Trend Line  
LDWF 16' Trawl Atlantic Croaker



SEAMAP 40' Trawl  
White Shrimp



LDWF 16' Trawl  
Blue Crab



LDWF 16' Trawl  
Atlantic Croaker

