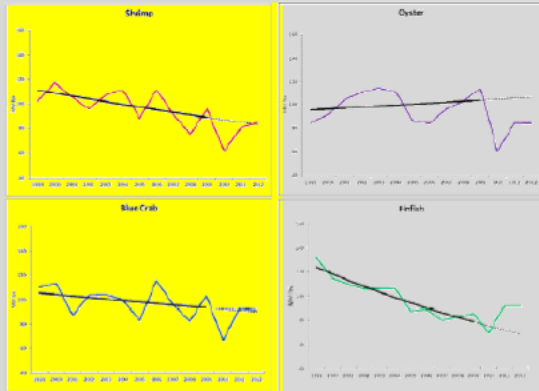


By 2012 Seafood Had Recovered to Long Term Trend Levels

Volume of Seafood Landings in 4-State Gulf Region
1999-2012



Species	Year	Relative to Trend	
		Percent Effect	T-Statistic
Shrimp	2010	-29.1%	-2.58 *
	2011	-5.1%	-0.38
	2012	2.0%	0.13
Oyster	2010	-42.4%	-3.67 *
	2011	-20.0%	-1.43
	2012	-20.0%	-1.43
Blue Crab	2010	-27.7%	-2.28 *
	2011	2.1%	0.14
	2012	1.7%	0.08
Finfish	2010	2.6%	1.15
	2011	22.4%	1.99 *
	2012	22.7%	2.02 *

*Significant at the 90% level based on log regression.

Source: NOAA Commercial Landings Data.
Notes: 4-state Gulf Region includes AL, LA, MS, FL Gulf. Annual volume of landings normalized to 1999-2009 average. Each line reflects the 1999-2009 trend. Trend is significant at the 90% level for shrimp and finfish based on log regression.

Shrimp



Blue Crab

