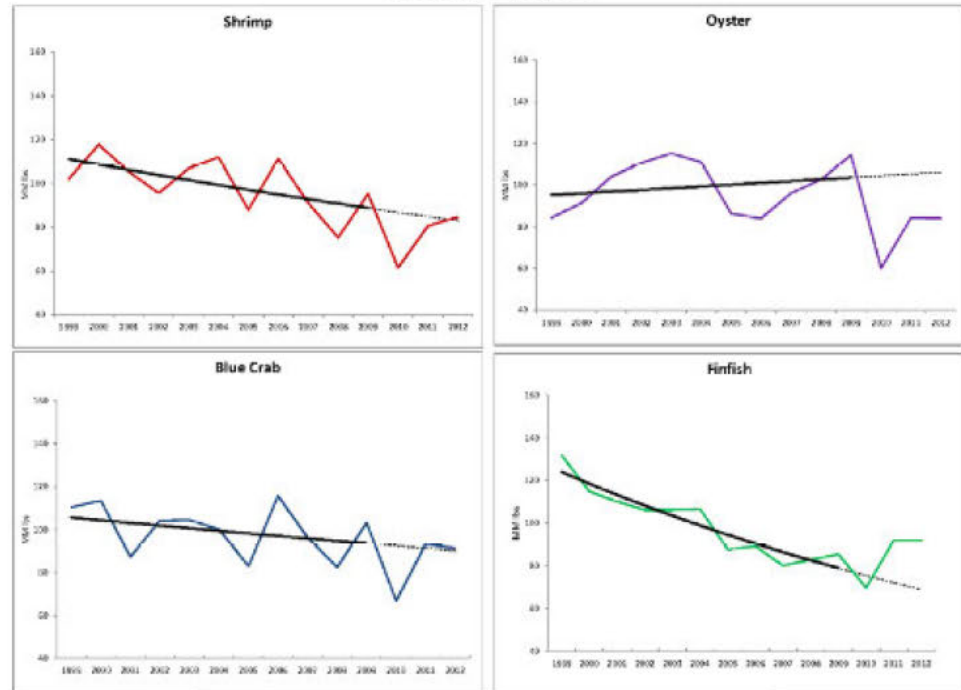


Seafood Landings

Volume of Seafood Landings in 4-State Gulf Region 1999-2012



Species	Year	Relative to Trend	
		Percent Effect	T Statistic
Shrimp	2010	-29.1%	-2.58 *
	2011	-5.1%	-0.38
	2012	2.0%	0.13
Oyster	2010	-42.4%	-3.67 *
	2011	-20.0%	-1.43
	2012	-20.8%	-1.43
Blue Crab	2010	-27.7%	-2.28 *
	2011	2.1%	0.14
	2012	1.2%	0.08
Finfish	2010	-7.6%	-1.15
	2011	27.6%	3.39 *
	2012	33.3%	3.83 *

*Significant at the 90% level based on log regression.

Source: NOAA Commercial Landings data.

Notes: 4-state Gulf region includes AL, LA, MS, FL Gulf. Annual volume of landings normalized to 1999-2009 average. Black line reflects the 1999-2009 trend. Trend is significant at the 90% level for shrimp and finfish based on log regression.

EXPERT REPLY REPORT OF DR. LOREN C. SCOTT

by
Loren C. Scott & Associates, Inc.
743 Woodview Court
Baton Rouge, LA 70810
lorcscott@aol.com
225-751-1797

In re: Oil Spill by the Oil Rig "Deepwater Horizon" in the Gulf of Mexico
MDL 2179
U.S. District Court for the Eastern District of Louisiana

September 26, 2014

Confidential pursuant to PTD #13

Loren C. Scott 9/26/14
Loren C. Scott Date

13073
Exhibit No. _____
Waldside Court
Reporters, Inc.