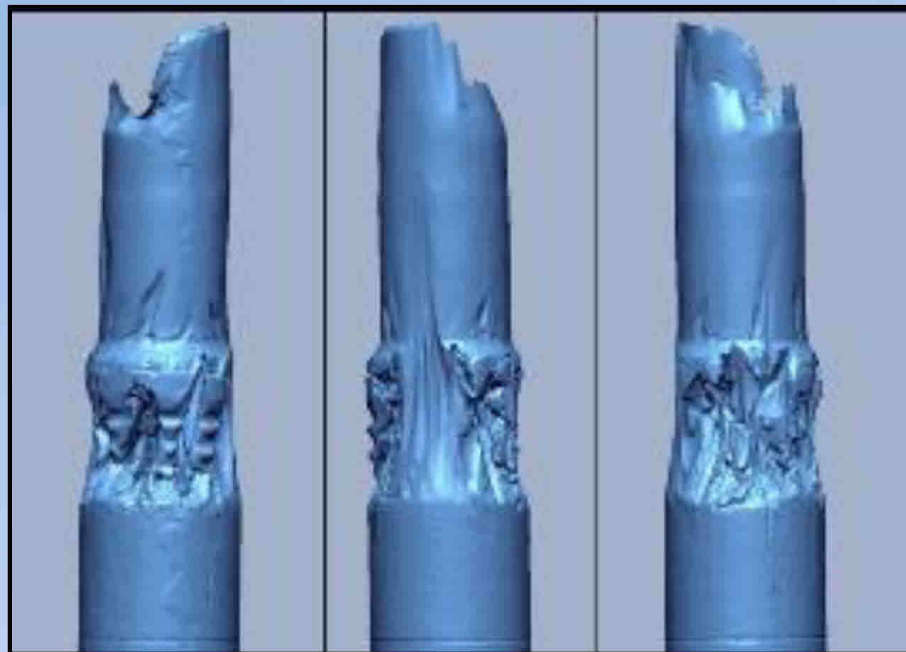


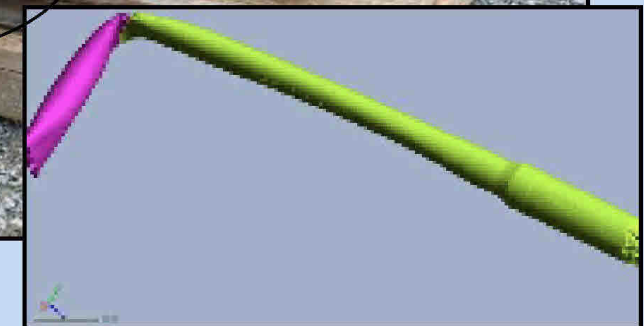
*Continuing Erosion Did Not Affect Flow Rate:*

## Evidence of Rapid Erosion at the Upper Annular

- **All erosion of pipe occurred within 36 hours**
  - Pipe was ejected into riser before riser collapse (kink)
  - Riser collapse occurred at 36 hours



DNV Report Fig. 126



DNV Report Fig. 64