

From: Wellings, James S [James.Wellings@bp.com] 5/6/2010 11:35 AM
To: Cantrell, Kirk (Delta Marine Tec); Curtis, Charles; Fleece, Trent J; Franklin, Bob; Heironimus, Mark B (LEWCO INTEGRATED TECH SYSTEMS); Holt, Charles A; kgirlinghouse@wildwell.com; MC252_Email_Retention; Patteson, Mark R; paul.king1@deepwater.com; Pere, Allen L; rob.turlak@deepwater.com; Roberts, Chris A (Frontline Group); Simpson, Richard; Stoltz, Dan; tbutler@oceanengineering.com; Wellings, James S; Wilson, Gabe S (Frontline Group)
Cc:
Bcc:
Subject: FW: Well Cap Animation Fixes
Attachments: WellCap2.wmv

This is for crew engagement and confidential. Do not send to people outside our team.

From: Llewellyn, Michael (Houston) [mailto:Michael.Llewellyn@deepwater.com]
Sent: Wednesday, May 05, 2010 7:42 PM
To: Kozicz, John (Houston); Markey, Michael (Houston); Wellings, James S; Hand, Steve (Houston)
Cc: Llewellyn, Michael (Houston)
Subject: Well Cap Animation Fixes

Please check animation fixes and let me know what you need.

Thanks,

Mike

PRIVILEGED AND CONFIDENTIAL

ATTORNEY-CLIENT COMMUNICATION

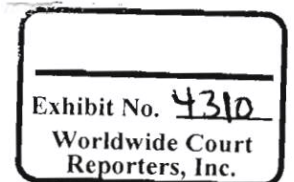
DOCUMENT(S) PREPARED IN ANTICIPATION OF LITIGATION

Mike Llewellyn

3D Technical Illustrator

Transocean Offshore Deepwater Drilling Inc

Tel - (832) 587 6194



Confidential

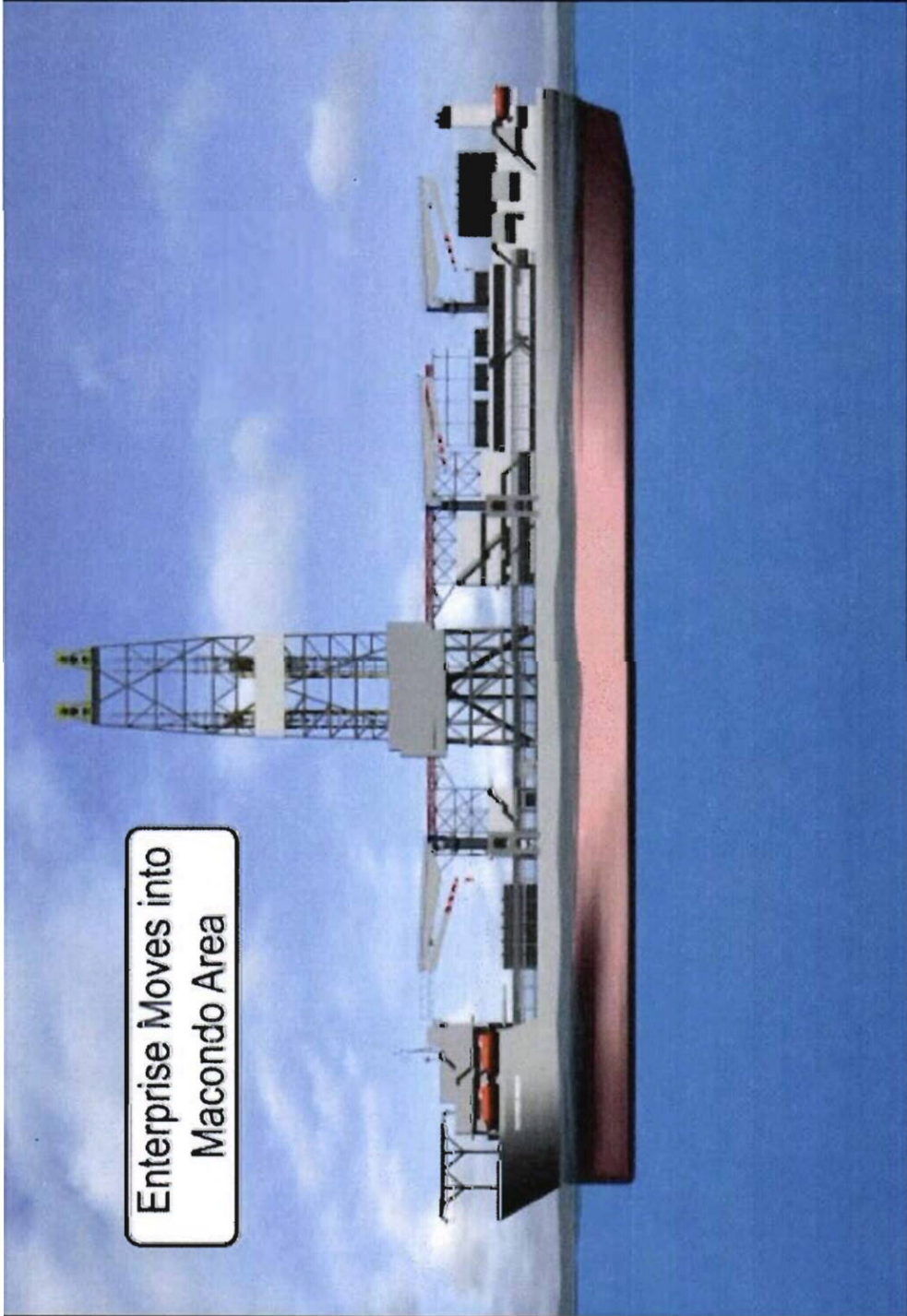
CAM_CIV_0215413

TREX 004310.0001

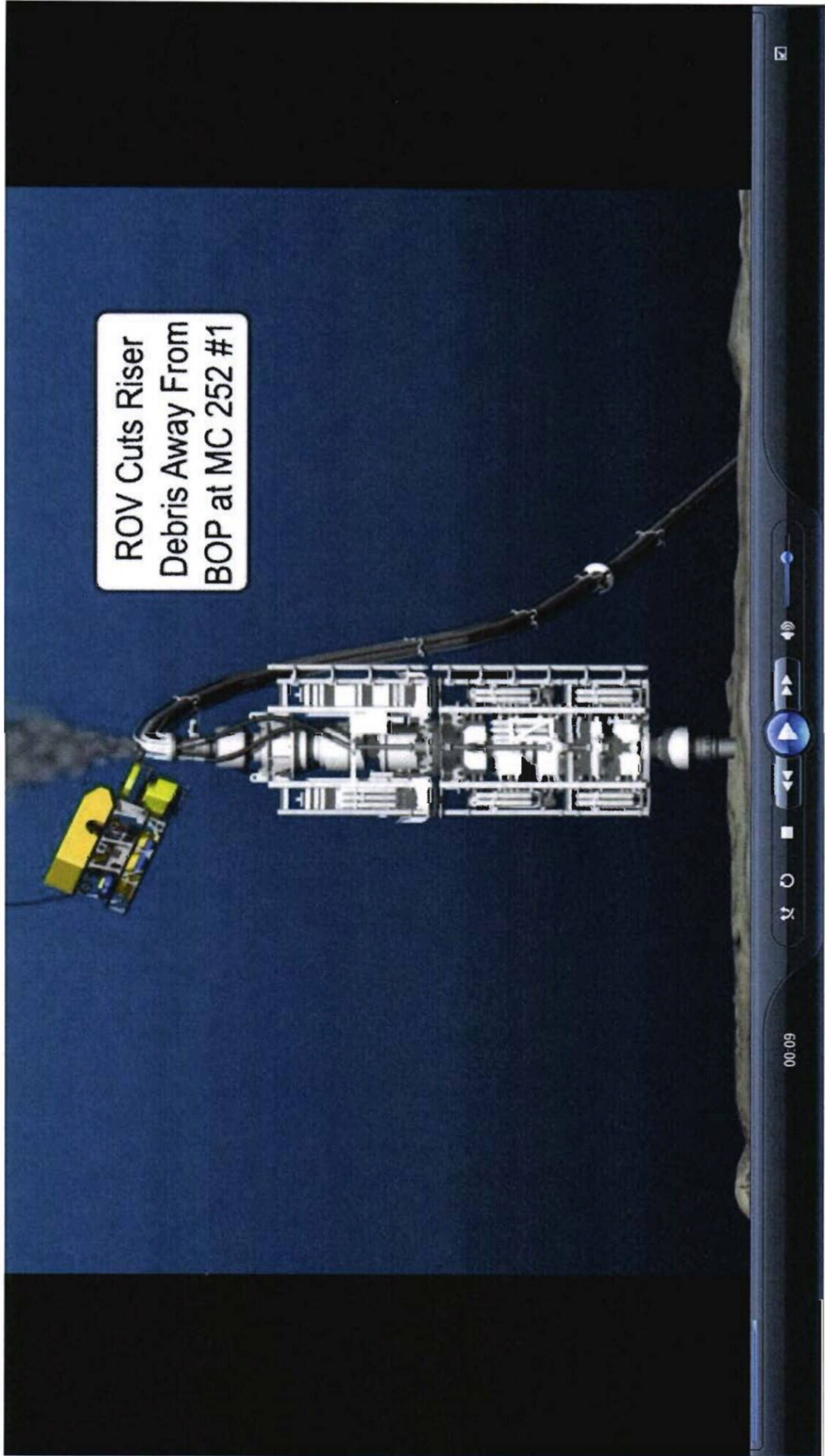
Document Produced Natively

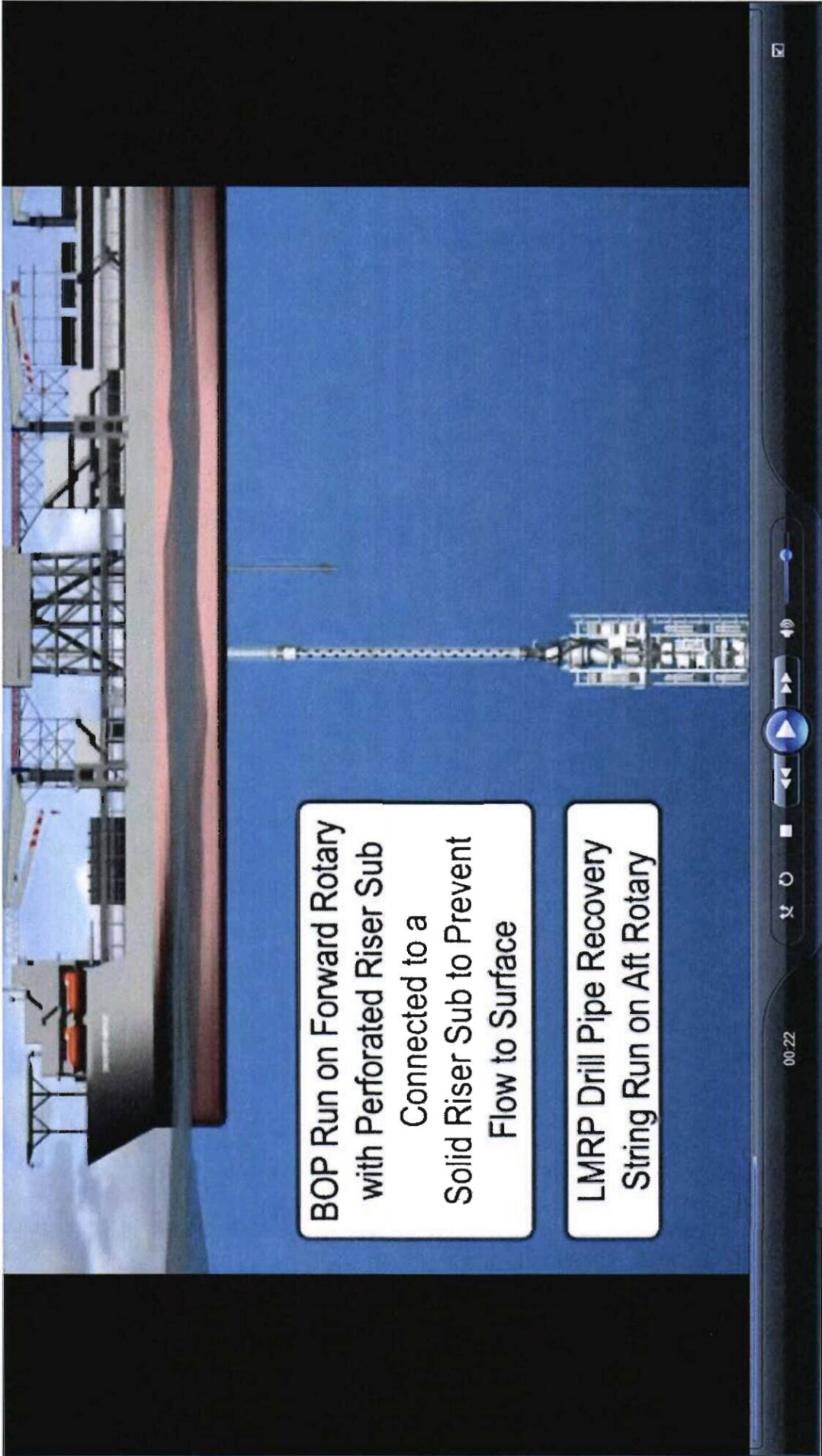
CAM_CIV_0215414

Enterprise Moves into
Macondo Area



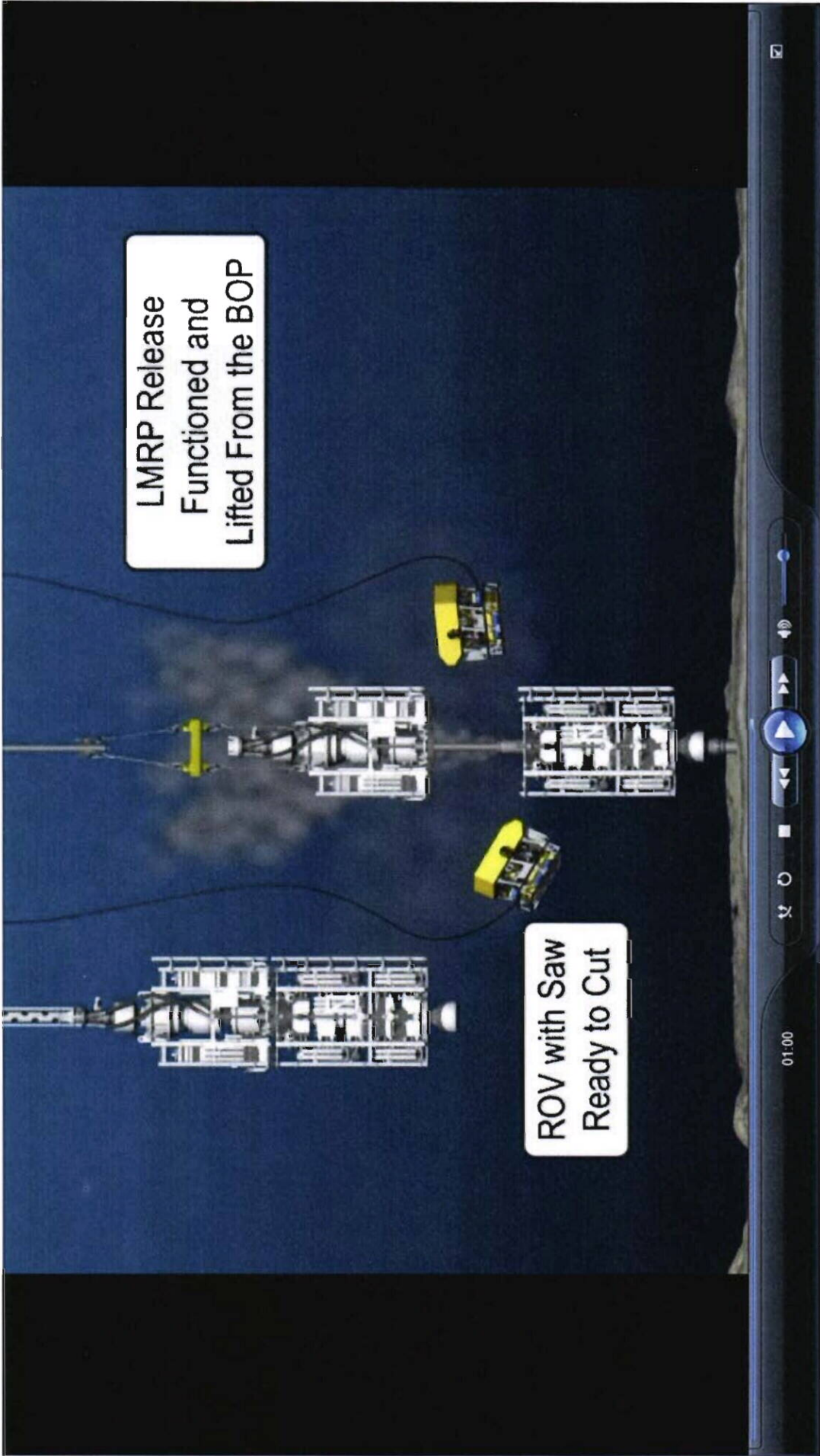
00:01





**BOP Run on Forward Rotary
with Perforated Riser Sub
Connected to a
Solid Riser Sub to Prevent
Flow to Surface**

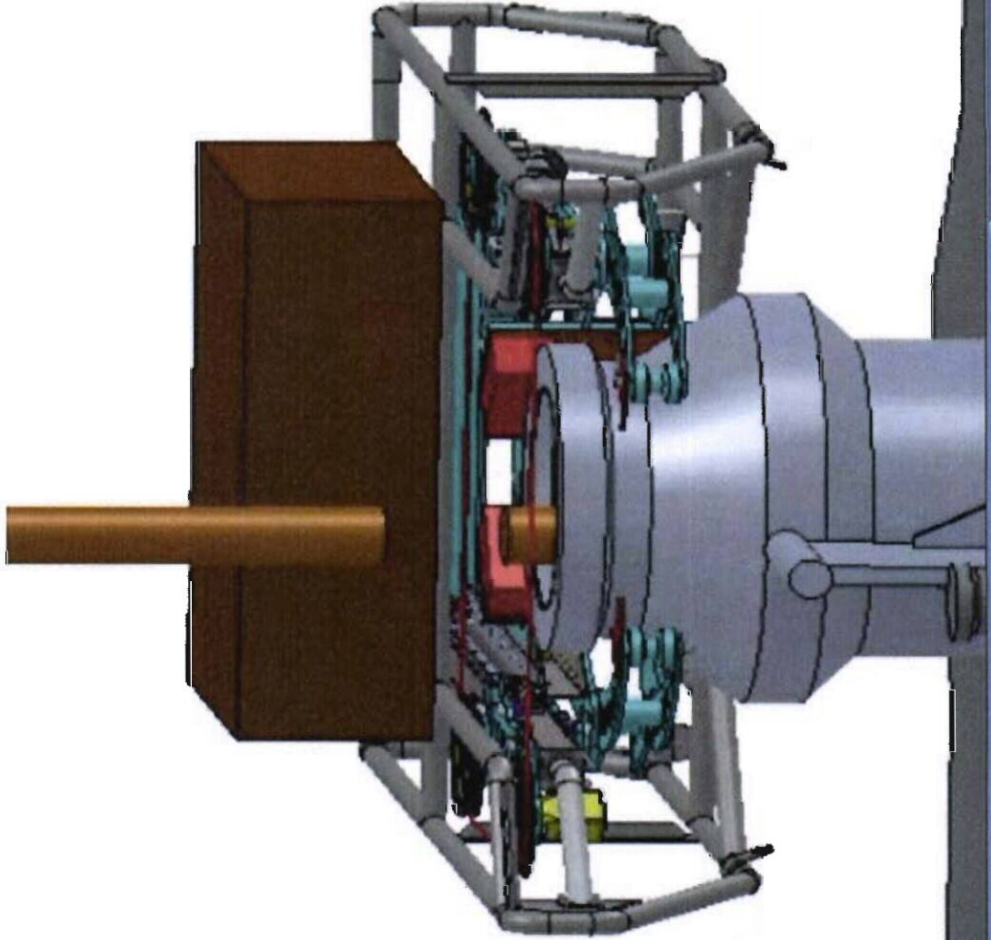
**LMRP Drill Pipe Recovery
String Run on Aft Rotary**



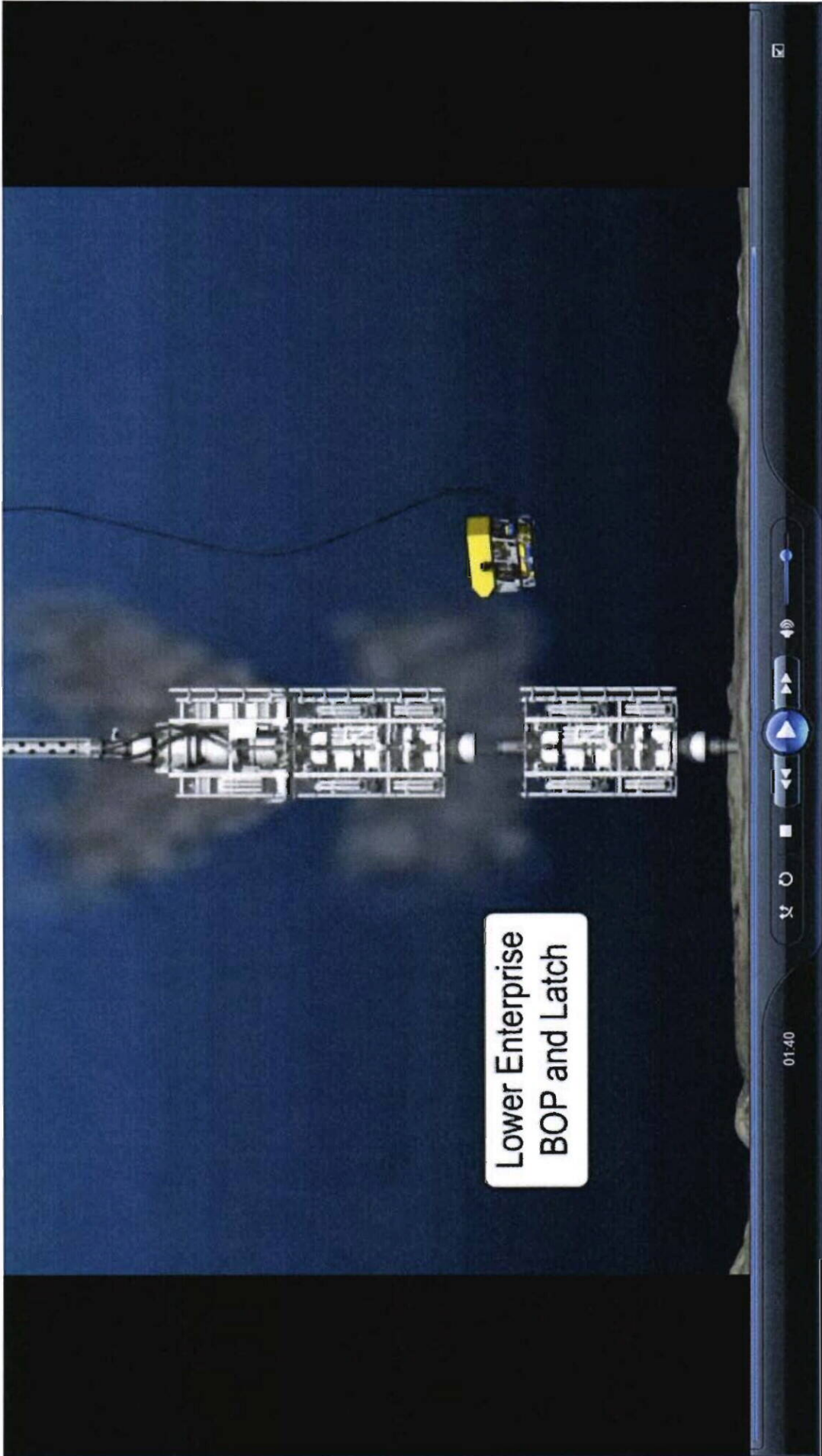
LMRP Release
Functioned and
Lifted From the BOP

ROV with Saw
Ready to Cut

01:00

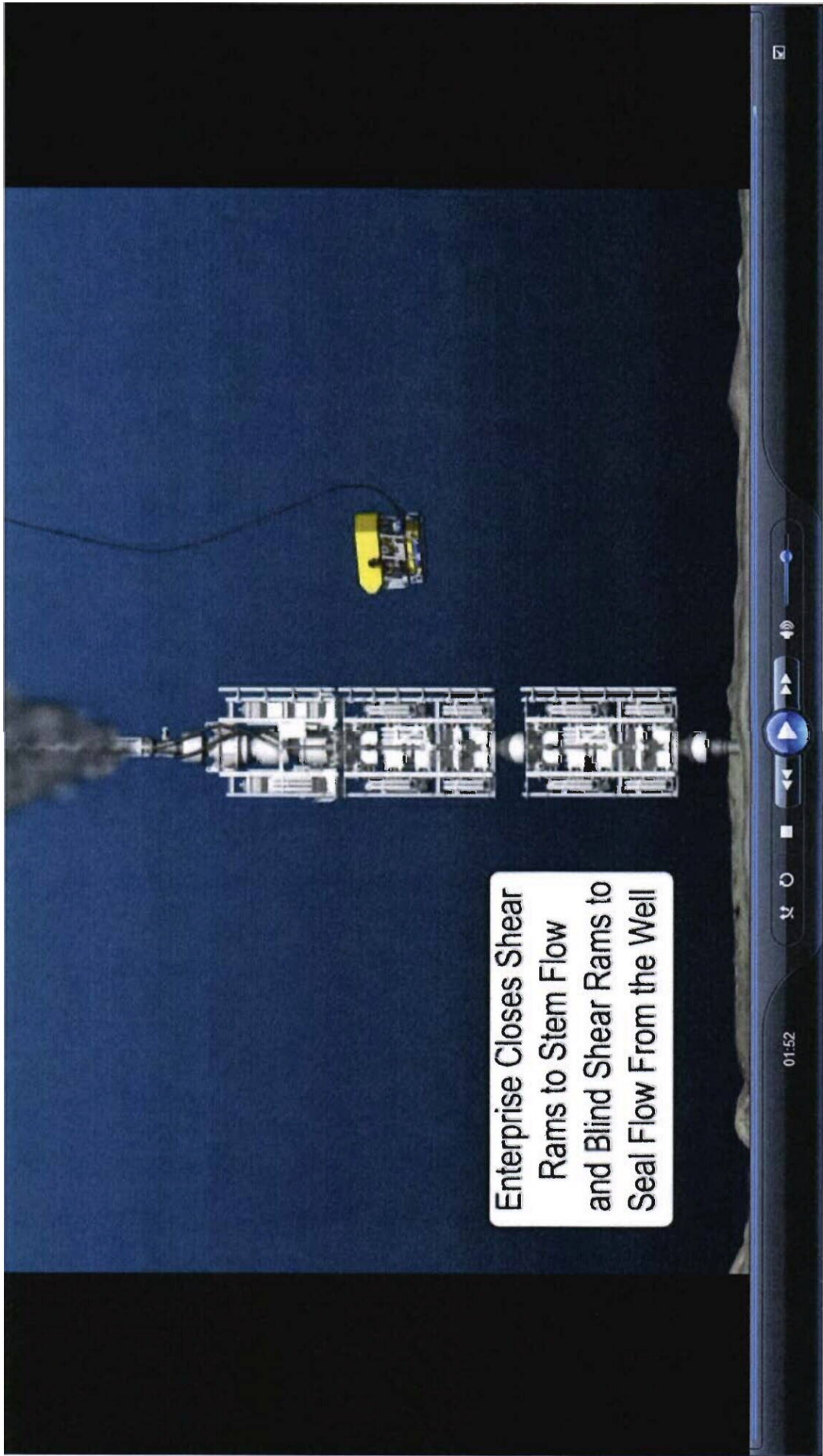


01:22

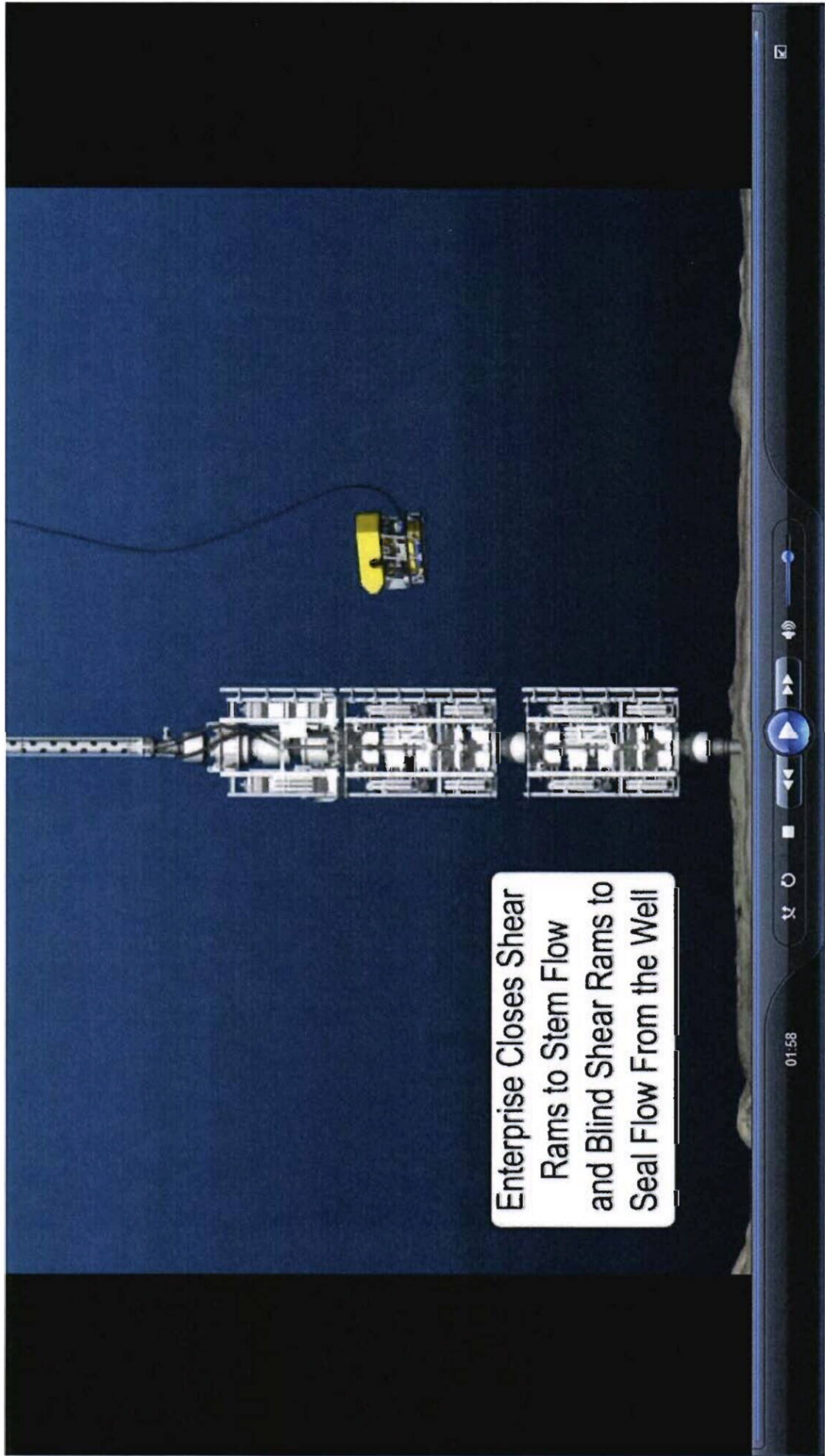


Lower Enterprise
BOP and Latch

01:40



Enterprise Closes Shear
Rams to Stem Flow
and Blind Shear Rams to
Seal Flow From the Well



Enterprise Closes Shear
Rams to Stem Flow
and Blind Shear Rams to
Seal Flow From the Well