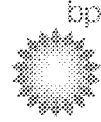


Exhibit Produced Natively



## MC 252 #1 (Macondo):

TD Forward Plan Review: Production Casing & TA options

## Key topics:



- PP/FG status
- Open Hole overview
- Decision to set Liner vs. Long String for "Keeper" well objective

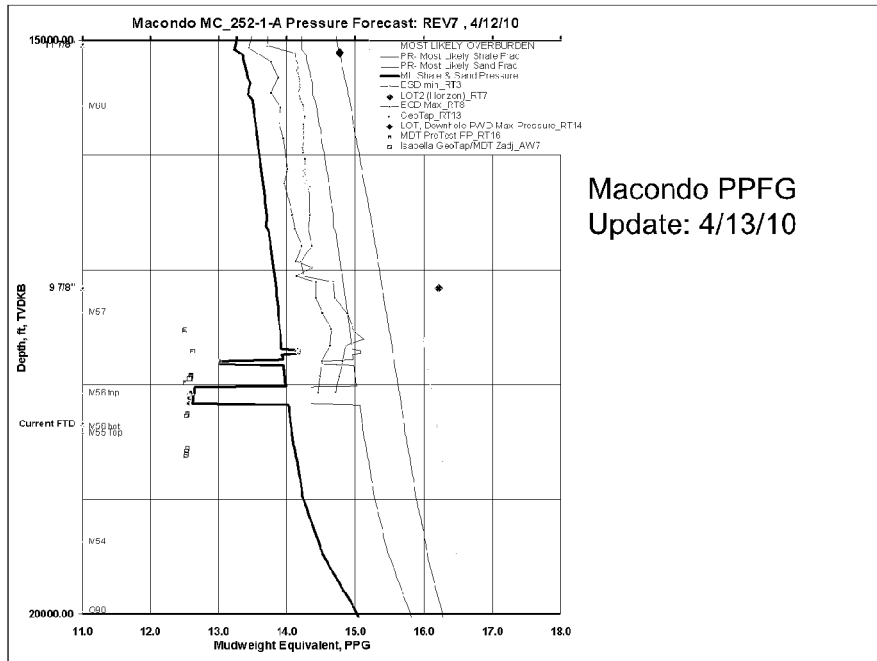
## Geology



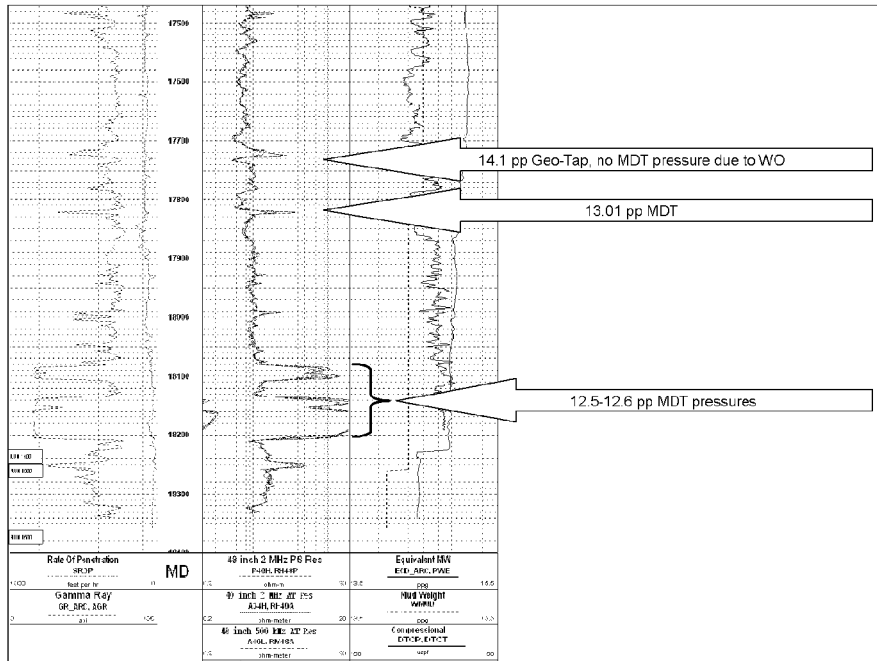
- Primary objective is hydrocarbon bearing.
- Logging program ongoing, 4 of 6 runs complete.
- Run 5: RSWC tool has failed, and we are POOH to replace motor.

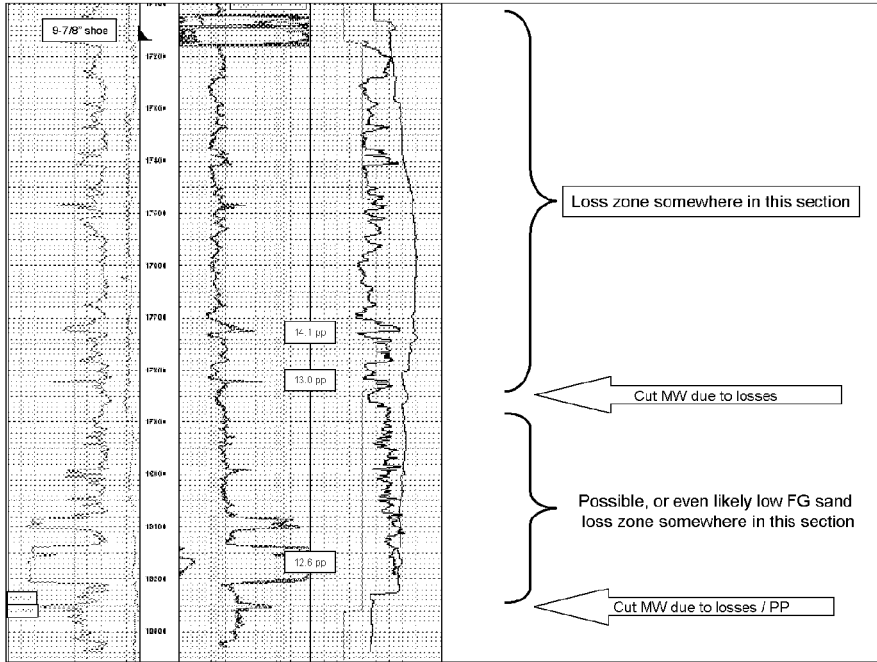
PPFG... as we think we know it now...



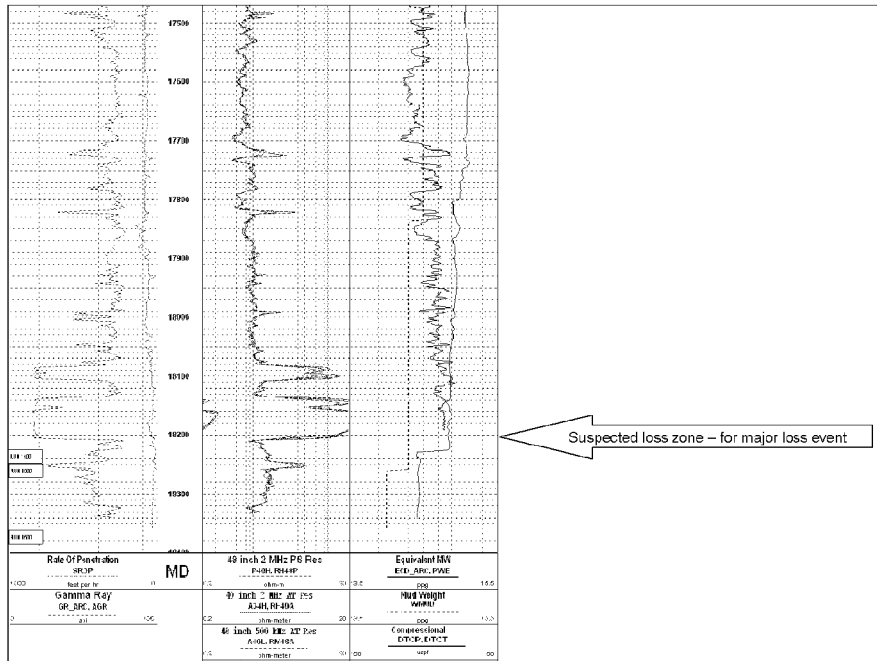


Macondo PPFG  
Update: 4/13/10









## “Keeper Well” options...



- Long string of 9-7/8" x 7" casing was the primary option...
  - Cement simulations indicate it is unlikely to be a successful cement job due to formation breakdown.
  - Unable to fulfill MMS regulations of 500' of cement above top HC zone ( thought to be 17,803')
  - Open annulus to wellhead, with HC zone(s) open to 9-7/8" seal assembly as only barrier.
  - Potential need to verify with bond log, and perform remedial cement job(s) prior to TA.

## “Keeper Well” options...



- 7" Liner (with 7" x 9-7/8" XO x 11-7/8" Versaflex hanger) is now the recommended option...
  - Less issue with landing it shallow (we can also ream it down)
  - Liner hanger acts as second barrier for HC in annulus
  - Primary cement job has slightly higher chance for successful cement lift due to lower ECD.
  - Remedial cement job, if required, easier to justify to be left for later.

# Wellbore Diagram

