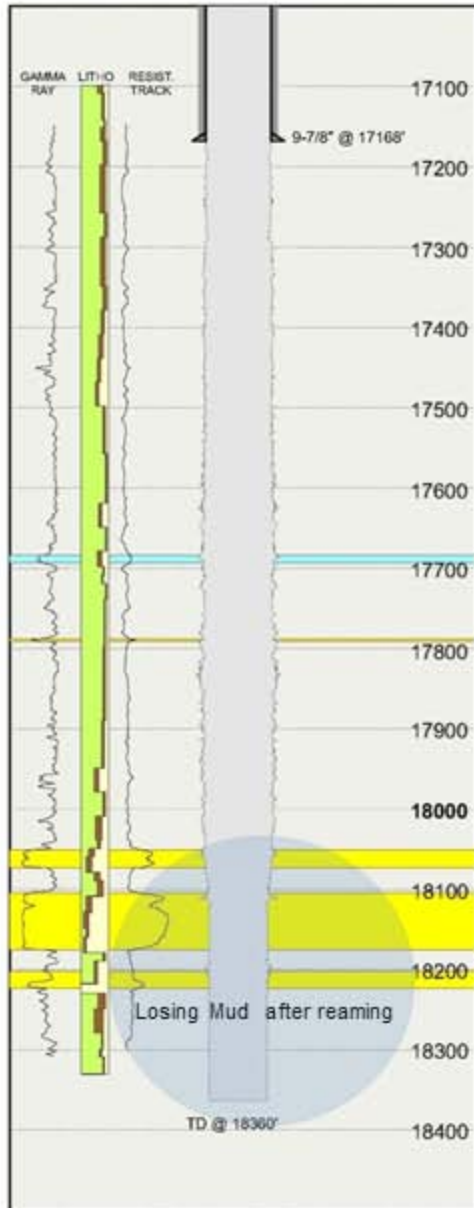


Drilling Summary For Last Hole Section (Continued)



4/8/2010

Under-Reamer worn out; Ran in Hole with new drilling assembly.
No Mud loss.

4/9/2010

Washed and reamed to 18234'.
When Back-reaming at 18,193', Flow out decreased from 39% to 29%.
Stopped pump and monitored well on trip tank for 1 hr;
Lost rate dropped from 6 bph to 1.2 bph;
Total daily mud loss was 201 Bbl (Seepage).
Pumped 172 bbl of 84 ppb LCM pill and **displaced with full returns**.
Washed and logged to 18260'; Max ECD=14.3 ppg (Surface Equivalent);
Circulated and conditioned mud.

No mud loss.

Drilled Ahead 100 feet to 18360'.
Circulated Well Clean.

No mud loss.

4/10/2010

Pulled out of Hole.