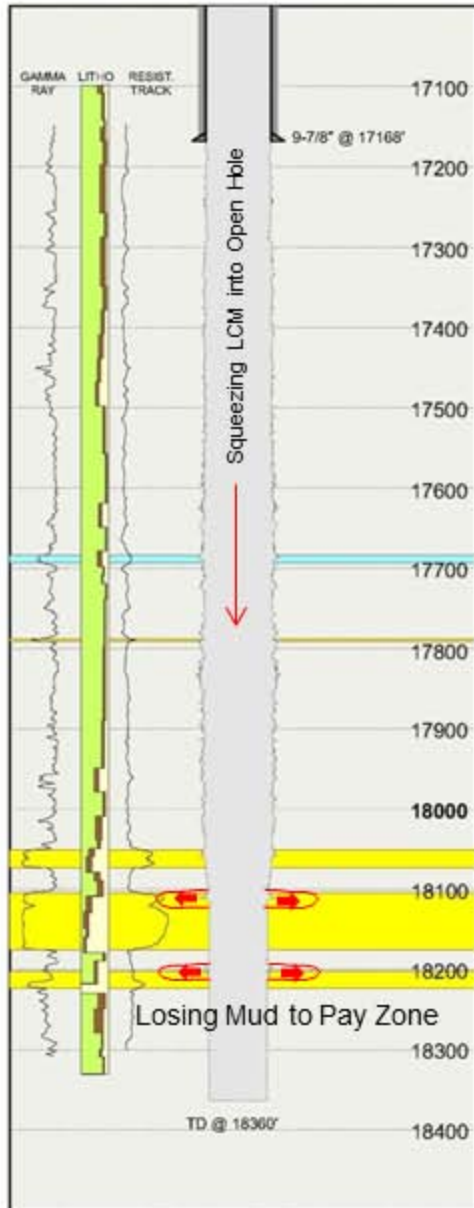


Drilling Summary For Last Hole Section (Continued)



4/5/2010

Monitored Well using base oil first in kill line and topped off the riser with base oil. Calculated Surface EMW based on amount of base oil added to be 13.9 ppg. Surface EMW estimated from PWD was 13.8 ppg. Pull bit into casing to let fracture heal & prepare wellbore strengthening treatment. Begin cutting mud weight back to 14 ppg while treating with 187 Bbl of LCM. Total Daily mud loss was 1263 Bbl

4/6/2010

Stripped up to 14,937' to position bit for wellbore strengthening treatment. Pumped 300 bbl Form-A-Set/Form-A-Squeeze LCM & displace with 14.0 ppg mud. Mud loss rate was 12 bph after pumping the treatment; Mixed another LCM pill. Total daily mud loss was 1104 Bbl

4/7/2010

Pumped 80 bbl Form-A-Squeeze pill; Started getting returns; Monitored Well; Well was Static; Circulated well with 14 ppg mud. No mud loss. Flow check for 30 minutes; Well Static; Pulled out of hole. Daily mud loss was zero.