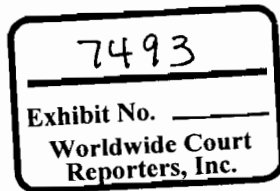


From: Christopher Haire
Sent: Mon Feb 01 08:00:48 2010
To: Danny Mooney; Kathryn Miller; Jesse Gagliano
Subject: daily report horizon
Importance: Normal
Attachments: Daily Report 2-1-10.xls

Arrived at new location yesterday around 1430hr. About 5-6 days more maintenance before with start in hole to drill out plugs and 18" shoe

C. Ryan Haire
Halliburton-Service Supervisor
BP America-Deepwater Horizon
Rig#: 281-366-7743
Cell#: 832-414-3837



This file was produced natively

Modified: 2/1/2010 08:00:48 AM CST

Size: 93KB (94,208 bytes)

DocExt: xls

CUSTODIAN_NAME: Haire, Christopher Ryan

MD5:

DREORIGINALNAME: Personal_kv0\Managed_kv9\Pending_kv10\Sent lte_kv13\daily re_kv624\Daily Report 2-1-10.xls

Comments: UNSUPPORTED OR EXCLUDED FILE TYPE



Daily Activity Report

Rig: Deepwater Horizon

Done Right. Done Once.

February 1, 2010

Think Safety - Work Safely - Halliburton Wants A Safer World

Service Coordinator :	Danny Mooney	Phone :	337-572-4621	Fax :	337-572-4713	
Customer:	BP Exploration	Block:	Macondo	Well Info	OCSG- 32306 Well #: MC 252 #1	
Dock Phone # :	985-396-3933	Docks :	C - PORT 1	AFE :	ZMACONDODE	
Rig Phone # :	281-366-7743	Fax # :	281-366-7745	E- mail :	deepwaf@bp.com	
Co. Rep :	Don Vidron	OIM #:	Jimmy Harrel	Co. Rep Relief :	Erl Lee	
Service Supervisor Reporting :	V. Tabler/ R. Haire			S.S. Relief :	J. Fleming/A. Cupit	
Service Supervisor E-mail :				Water Depth:	4992	
Crew Change Day :	Tuesday	Date	9-Feb	Crew Change Location :	PHI HOUMA, LA.	
Present Depth :	0	MD	0	TVD	Pore Pressure:	
Hole Size :	Inches		Tight Hole :		PPG	
Present Mud Weight :	8.66	PPG	32	PV	13 YP	150 Temp
Mud Type :	Synthetic		Mud Co :	M.I.		Flowline
Base Oil:						Pits

	Size	Weight	MD	TVD	TOL(MD)	Thread	Mud Wt	Pore Psi	Shoe Test
Conductor Casing 1	36"	552 ppf	5321	5321	5067	100D/MT			
Surface Casing	28"	218.3	6217	6217	5067	S60DMT			
Surface Casing	22"	224.3	7937	7937	4849	H90MT			
Drilling Liner	18"	117.0	8968	8968	5818	Hyd 511			
Intermediate Csg.									
Drilling Liner									
Drilling Liner									
Casing									
Drilling Liner									
Production Casing									

	OD	ID	Weight	Length	Factor	Caliper Info
Workstring #1						
Workstring #2						
Workstring #3						

LAST 24 HRS
 Arrived on Macondo location and continued performing BOP and rig maintenance

PRESENT OPERATIONS
 Performing BOP maintenance and other rig maintenance

NEXT 24 HOURS
 rig and BOP maintenance

Equipment on Board (include Hal Tanks and Tools)

Unit Type : ISO	
Liquid Additive : CMS# 10085507	
Slugging Pit Capacity : 200 bbl	
	HAL-TANK 31295-5
	HAL-TANK 31294-10
	HAL - TANK 34918-1

	Monday	Danny Mooney	Baker Hughes Inteq.	Fresh Water
	Tuesday	Mike Stidham	Baroid	Sea Water
	Wednesday	Paul Coshatt	Desco	PHPA
	Thursday	Gene Blocker	M.I.	Spud Mud
	Friday	Dennis Culver	Newpark	Aquagel
	Saturday	Winston Kyser		EcoFlow
	Sunday			Gel Water
				Synthetic
				Gel Sea Water
yes	48"			KCL Water
	36"			Novadrill
	11.875"			Petro-Free LE
	11.75"			Synteq
	10.75"			Versa Clean
	38"			Accolade
	30"			Novadrill Plus
	28"			
	24"			Novadrill Plus
	22"			Novadrill Plus
	20"			Diesel Mud
	18.625"			
	16"			
	13.375"			Novadrill Plus
	9.625"		gals	Versa Drill
	7.625"			
	7"			
	5.5"			LOT
	5"			FIT
	4.5"			

Rig Name: Deepwater Horizon
 Company: BP Exploration
 Well Loc: KC 102 #1

Service Sup: V. Tabler/ R. Haire
 Date: 1-Feb-10

Normal Unit Iron Package

Qty	Type	Serial Number
1ea	1.75 Valve	B1776298-9
1ea	Lead Off	12120500S146
1	Chicksan Loops	0169850S005
2	Chicksan Loops	02180300S028
3	Chicksan Loops	12120550S002
4	Chicksan Loops	5039950S008
5	Chicksan Loops	5310050S003

Extra Iron on Rig

Rented or Not	Type	Serial Number
		#34918-1 , #31295-5 , #31294-10 ,
		THESE TANKS MUST STAY ON BOARD THE RIG

Bulk Cement On Board

Tank # / Capacity	MT	
D.T. #1 / 1030 cu.ft.	MT	Prem + .07% EzFlo +1.88#/sk + D-Air + silica + OKLA + Sa-541
D.T. #2 / 1030 cu.ft.	622	Prem + .07% EzFlo +1.88#/sk + D-Air + silica + OKLA + Sa-541
COL.#3 / 2725 cu.ft.	648	Prem + .07% EzFlo +1.88#/sk + D-Air
COL.#4 / 2725 cu.ft.	MT	clean
COL.#7 / 2725 cu.ft.	0	Clean
COL.#8 / 2725 cu.ft.	0	CLEAN

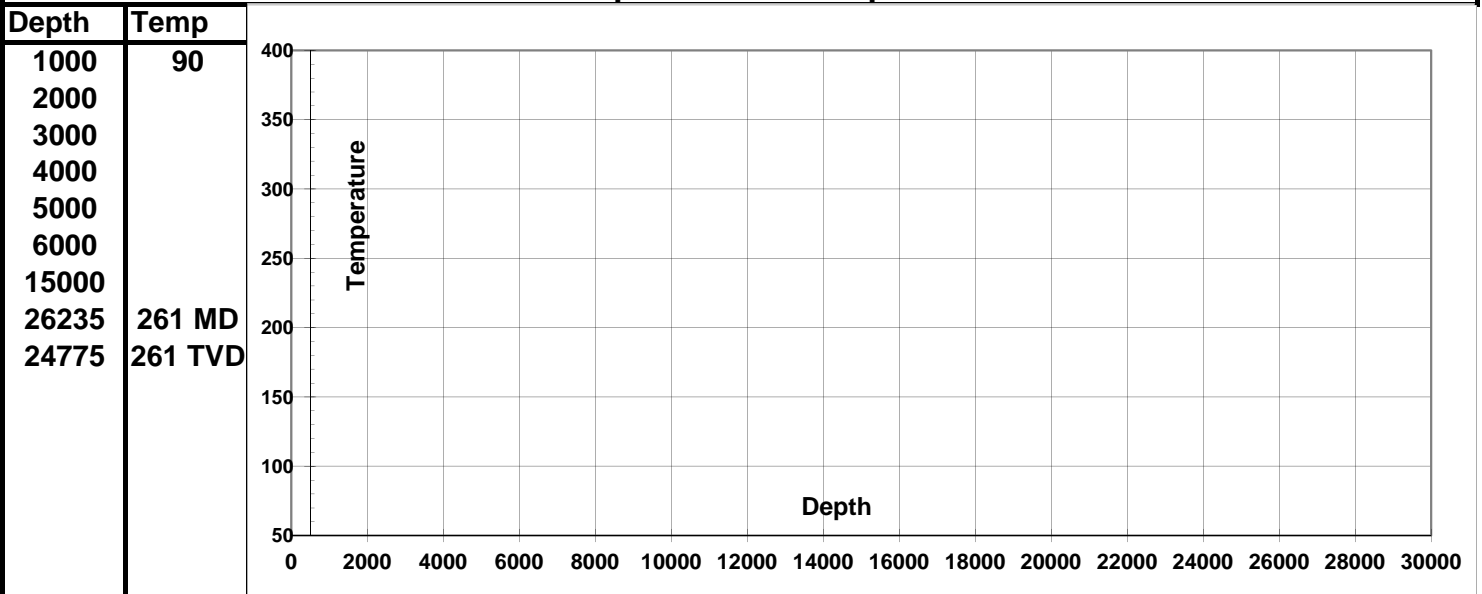
Additives on Board	Amount	LOT #	Additive	Amount	LOT #
		11137-01			
hr-6	80	153			
hr-6	200	165			
HR-25L	65	05119-01			
SCR-100L	0	H8430530	SEM-8	0	SN# 32906BM480
SCR-100L	40	H84302117			
HALAD 344-EXP	135	H344E 05040908	SCR-100L	26	CMS
HALAD 413L	20	H8432935	SEM-8	500	CMS
GASSTOP EXP	65		HALAD 344 EXP	0	CMS
D-AIR 3000 (cement room)	20				
	Spacer on Board		Amount	LOT #	
TUNED SPACER III			198 sx		Sack Rm
POTASSIUM CHLORIDE			49 sx		Sack Rm
D-AIR 3000 (sack room)			45 gal		Sack Rm
CFR-3L			100 gal		Sack Rm

1.75 inch valve	Rented
C & C HOSE	
LEAD OFF SWIVEL	
CHIKSAN SWIVEL	
10' STRAIGHT	
2' STRAIGHT	
3x2 X-OVER	
2" VALVE	

20"			Versa Clean
18.625"		gals	Versa Drill
18"		lbs	
16"		sks	
13.625"			
13.375"			
7.625"			
7"	lbs		
	gal		
	sks		
7.625"			

Well Name

Temperature vs Depth



**** Note: Temperature readings taken from MWD Tool ****

MWD Company: Sperry-Sun
Internal or External Temp: Internal

Well TD/TVD/MD