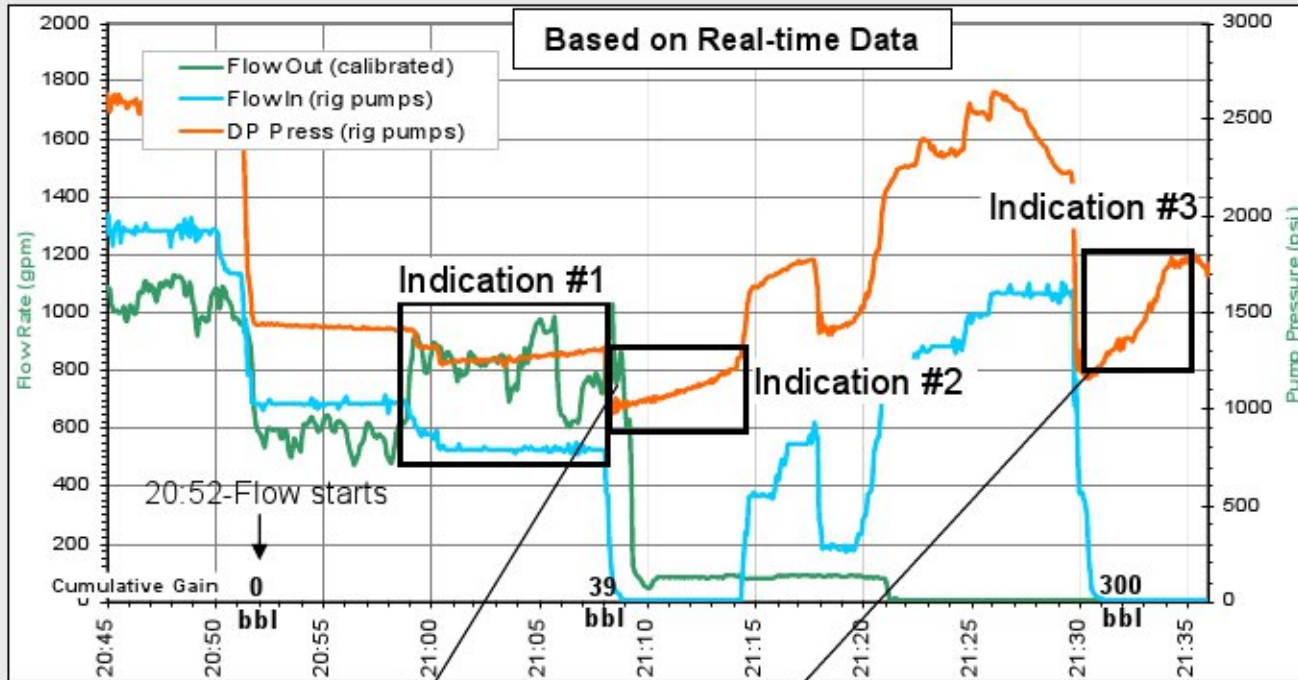


# Key Finding #4

## The influx was not recognized until hydrocarbons were in the riser



### Flow indications:

- #1: Drill pipe pressure increased by 100 psi, (expected decreased); ~39 bbl gain from 20:58 to 21:08
- #2: Drill pipe pressure increased by 246 psi with pumps off
  - Flow out does not immediately drop after shutting down pump
- #3: Drill pipe pressure increased by 556 psi with pumps off; ~300 bbl gain

▪ No well control actions taken

