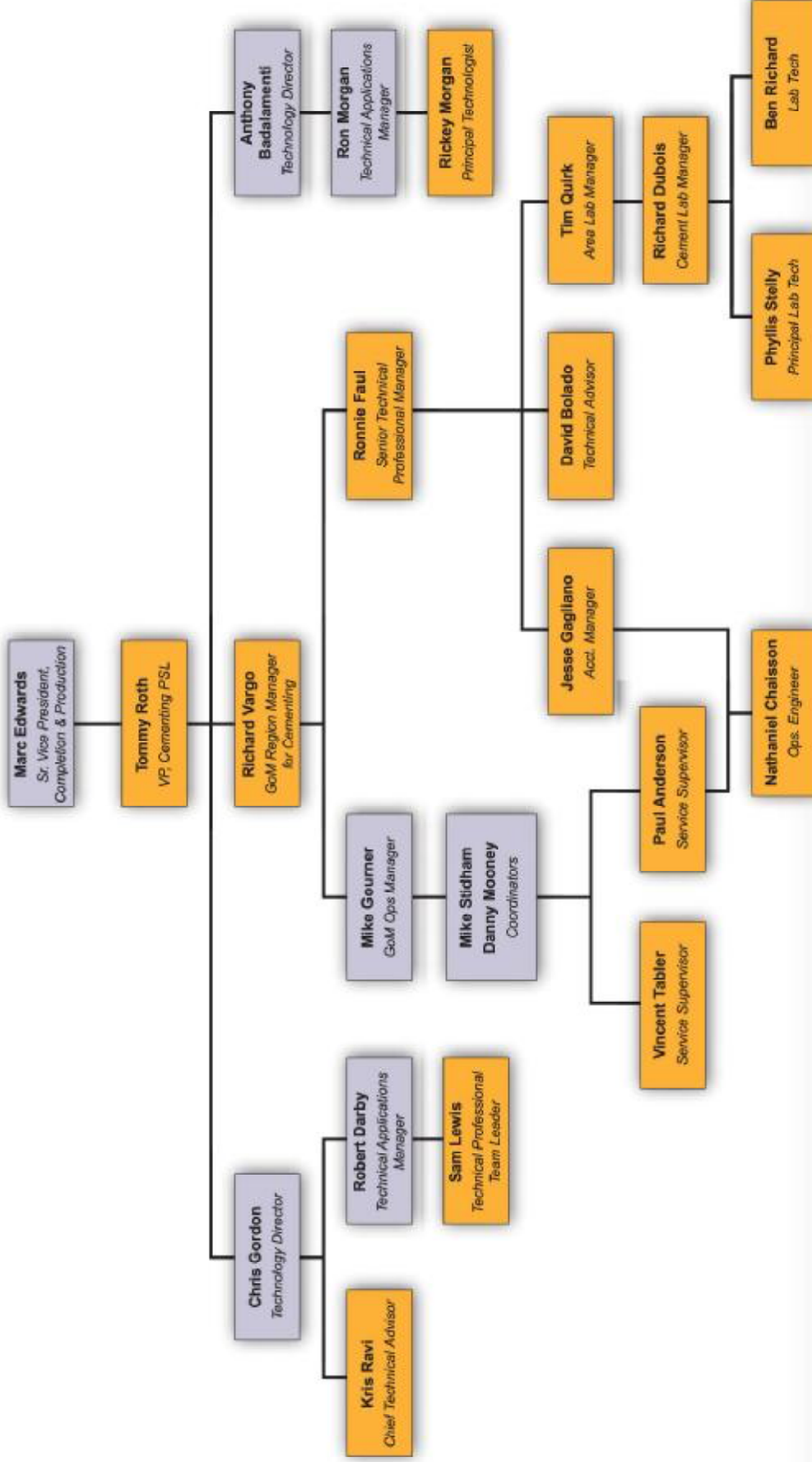


# HESI Employees as of April 20, 2010

**Jim Browne**  
President,  
Western Hemisphere Ops

**Tim Probert**  
President, Global Business Lines &  
Corporate Development;  
Chief HSE Officer

**Joe Rainey**  
President,  
Eastern Hemisphere Ops



Source: Roth Dep. at 82-19-83-1, 784-16-23; Vargo Dep. at 435-14-21, 19-3-21-12; Lewis Dep. at 78-25-79-12, 74-21-76-16, 74-16-20, 105-25-106-1; Morgan Dep. at 16-2-11, 73-19-74-8; Faul Dep. at 143-4-15, 314-19-315-21, 24-2-13, 312-6-18, 118-7-16; Quirk Dep. at 29-24-30-22, 33-1-13, 36-7-20; Sento Dep. at 81-3-14, 217-4-218-3; Stelly Dep. at 10-1-24, 23-5-12; Richard Dep. at 15-9-16, 11-22-12-1; Anderson Dep. at 174-20-23, 11-24-25; Chaisson Dep. at 26-1-27-13; Tabler Dep. at 11-25-12-11, 15-4-12, 18-24-19-3; Probert Dep. at 23-16-22, 312-21-24; TREX 000970