

**BP EXPLORATION AND PRODUCTION**

**FORMATION PRESSURE INTEGRITY TEST (PIT) REPORTING SPREADSHEET**

WELL NAME FIELD	MC 252 #3 - Maccondo Relief Well	RIG DATE	DD3 15-Jun-10	SUPERVISOR	Sepalvado	TEST TYPE	<input type="radio"/> FIT <input checked="" type="radio"/> LOT
ELEVATION KB	88 ft	HOLE TD (MD)	13,988 ft	CSG SHOE (MD)	13,869 ft	INCLINATION AT SHOE	34.5 deg
WATER DEPTH	5,161 ft	HOLE TD (TVD)	13,451 ft	CSG SHOE (TVD)	13,362 ft		
MUD WEIGHT	12.8 ppg	DH ESD	13.05 ppg	TEST RATE (ppm)	0.50		

**PRE-TEST CALCULATIONS/RECORDINGS** (Surface) (Downhole)

PROJECTED FIT/LOT: 14. ppg  
Expected pressure for "Projected FIT/LOT": (psi): 853

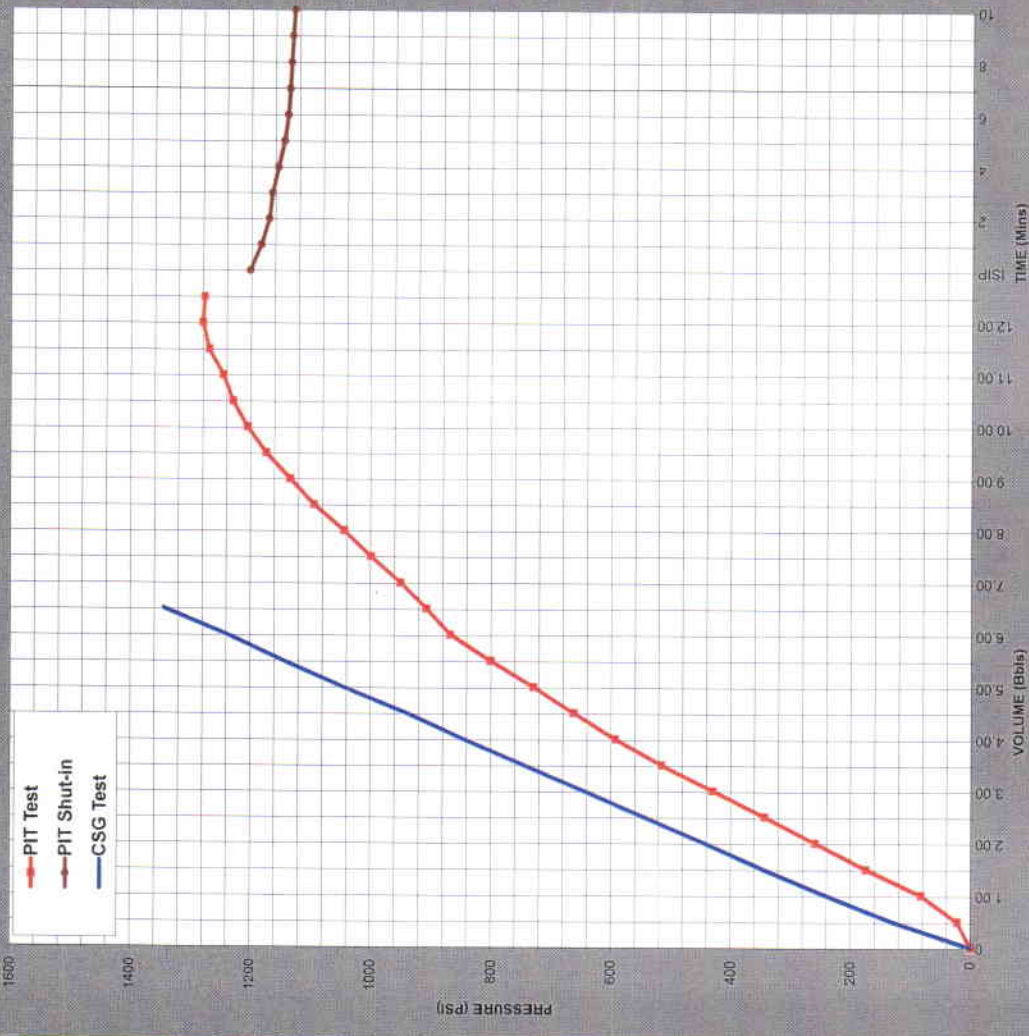
**POST-TEST RESULTS**

MAXIMUM OBSERVED PRESS (psi): 1281  
INITIAL SHUT-IN (SIP) OR LOT PRESS (psi): 1202  
MUD PUMPED (bbl): 12.50  
MUD FLOW BACK (bbl): 12.50

MMS Value --MEASURED PIT (EMW) = 14.86 ppg  
MEASURED LOT (EMW) = 14.53 ppg

**(PIT - RECORDED VOLUME PUMPED EVERY 0.25 BBL or 0.5 BBL PUMPED)**

CASING TEST			FORMATION PRESSURE INTEGRITY TEST		
TIME (min)	VOL (bbl)	PRESSURE	TIME (min)	VOL (bbl)	PRESSURE
0	0.00	0.0	0	0.00	0
1.0	0.50	130.0	1.0	0.50	23
2.0	1.00	240.0	2.0	1.00	83
3.0	1.50	345.0	3.0	1.50	175
4.0	2.00	443.0	4.0	2.00	260
5.0	2.50	545.0	5.0	2.50	344
6.0	3.00	645.0	6.0	3.00	430
7.0	3.50	745.0	7.0	3.50	516
8.0	4.00	845.0	8.0	4.00	594
9.0	4.50	940.0	9.0	4.50	663
10.0	5.00	1045.0	10.0	5.00	730
11.0	5.50	1145.0	11.0	5.50	801
12.0	6.00	1240.0	12.0	6.00	868
13.0	6.50	1345.0	13.0	6.50	908
14.0	7.00	1445.0	14.0	7.00	951
15.0	7.50	1545.0	15.0	7.50	1000
16.0	8.00	1645.0	16.0	8.00	1045
17.0	8.50	1740.0	17.0	8.50	1095
18.0	9.00	1840.0	18.0	9.00	1135
19.0	9.50	1940.0	19.0	9.50	1175
20.0	10.00	2035.0	20.0	10.00	1205
21.0	10.50	2135.0	21.0	10.50	1230
22.0	11.00	2240.0	22.0	11.00	1246
23.0	11.50	2345.0	23.0	11.50	1270
24.0	12.00	2450.0	24.0	12.00	1281
25.0	12.50	2560.0	25.0	12.50	1278
26.0	13.00	2660.0	26.0	12.50	1278
27.0	13.50	2760.0	27.0	12.50	1278
28.0	14.00	2860.0	28.0	12.50	1278
29.0	14.50	2960.0	29.0	12.50	1278
30.0	15.00	3090.0	30.0	12.50	1278
31.0	15.50	3195.0	31.0	12.50	1278
32.0	16.00	3300.0	32.0	12.50	1278
33.0	16.50	3410.0	33.0	12.50	1278
34.0	17.00	3510.0	34.0	12.50	1278
35.0	17.50	3615.0	35.0	12.50	1278
36.0	18.00	3710.0	36.0	12.50	1278
37.0	18.50	3820.0	37.0	12.50	1278
38.0	19.00	3920.0	38.0	12.50	1278
39.0	19.50	4020.0	39.0	12.50	1278
40.0	20.00	4125.0	40.0	12.50	1278
41.0	20.50	4230.0	41.0	12.50	1278
42.0	21.00	4340.0	42.0	12.50	1278
43.0	21.50	4440.0	43.0	12.50	1278



7520  
Exhibit No. \_\_\_\_\_  
Worldwide Court Reporters, Inc.

