

**DAILY PPFG REPORT**  
**Mississippi Canyon Block 252 #1 ST00 BP01**  
 OCS-G-32306  
 API-60-817-4116901  
**Macondo Exploration Well**



**WELL INFORMATION**

Rig : Horizon	RT – MSL : 75 ft	Water Depth : 4992 ft	RT – Mudline : 5067 ft
---------------	------------------	-----------------------	------------------------

**OPERATIONS SUMMARY**

Tripped in. Performed LOT that gave no meaningful formation data. Drilled.

MD	TVD	Progress (24 hr)	Hole size	Current formation	
13784'	13773'	634'	12 1/4"x14 1/2"	Calcareous Shale/Siltstone	
<b>Sensor Distances</b>		<b>Sonic: 70.52'</b>	<b>PWD: 35.36'</b>	<b>GR: 36.07'</b>	<b>Res: 45.24'</b>

**PORE PRESSURE SUMMARY**

<b>Max PP:</b>			
<b>Open hole (13768 ft MD)</b>	13.2 ppg (12.9 shale)	<b>PP Bottom hole</b>	13.2 ppg
			<b>Last FIT:</b> 14.60 ppg (surf) <b>TVD</b> 14.71 ppg (dh)
<b>Surf MW:</b>	13.0 ppg	<b>ECD:</b>	13.38 ppg
			<b>ESD min/ESD max:</b> 13.28/13.39 ppg <b>(13721 MD)</b>

**Resistivity Analysis:** Resistivity started at 12.3 shale/12.6 sand with a reading of 0.67-0.70 ohmm. As resistivity dropped below 0.65 to 0.55 pore pressure estimation was raised to 12.9 shale 13.2 sand. The resistivity trend began to deviate from the expected at 13200 TVD. By 13400 TVD, the increasing trend became more aggressive. At 13475 TVD, the trend had leveled off.

**Sonic Analysis:** Sonic did not appear to have any character after leaving the shoe – it ranged from 91.5 to 88.5 us. Not using for analysis.

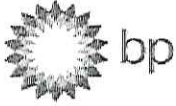
**Additional Observations:** Dxc also showed an increasing trend at approximately the same time the resistivity indicated increasing pore pressure. Background gas also increased from 33 u to 70 units at around 13520 MD. Trace angular cavings noted at 13590 MD lag depth indicating minimal hole breakout, but not underbalanced conditions. A bit of C2 was noted at the connection of 13450 MD

LOT broke over at 1480 psi which was above overburden of 14.5 ppg causing uncertainty about its usefulness as a formation evaluation tool. Maximum ECD of 13.7 based on the possible sand frac at the 13250 sand seen on the original hole.

**Pressure Analyst:** Paine

**Date:** Mar 23, 2009

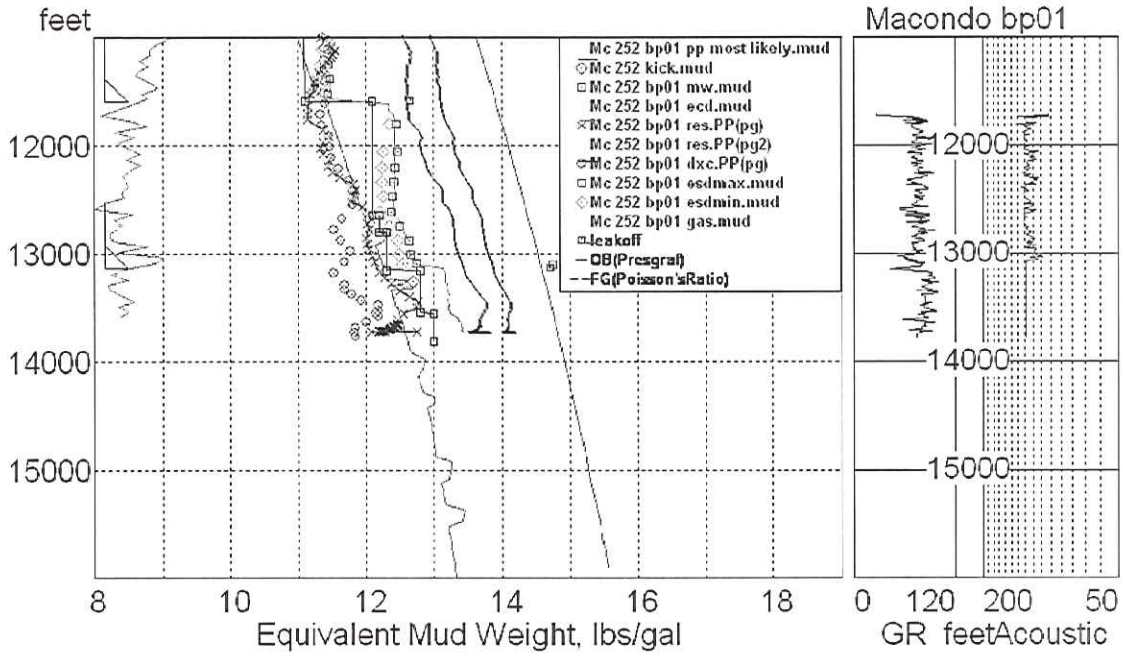
EXHIBIT # 205A  
 WIT: Quitau

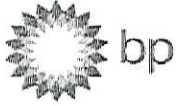


**DAILY PPFG REPORT**  
 Mississippi Canyon Block 252 #1 ST00 BP01  
 OCS-G-32306  
 API-60-817-4116901  
 Macondo Exploration Well



DAILY PRESSURE PLOT:





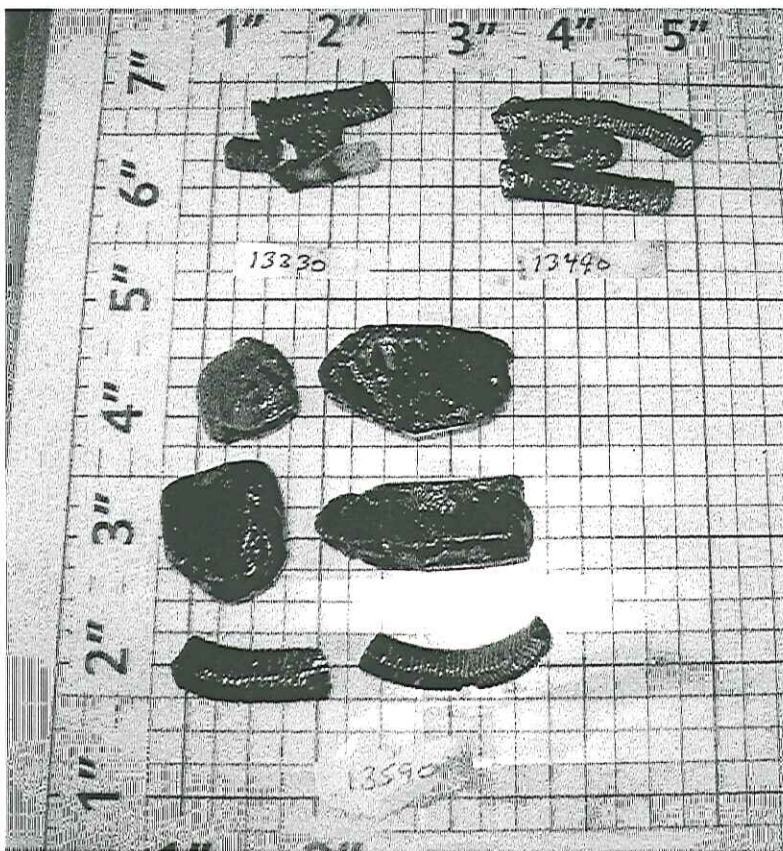
**DAILY PFG REPORT**  
Mississippi Canyon Block 252 #1 ST00 BP01  
OCS-G-32306  
API-60-817-4116901  
Macondo Exploration Well



**Cuttings/Cavings Analysis:**

Cuttings normal bit cut until last check. Then cavings – possibly knockoff – possibly angular appeared in trace amounts. They coincided with the increased pressure zone. Current interpretation is that they are angular cavings indicating minimal hole breakout. Not an underbalanced condition, but an approaching balance condition.

**Cuttings/Cavings Photograph :**





**DAILY PPFG REPORT**  
**Mississippi Canyon Block 252 #1 ST00 BP01**  
OCS-G-32306  
API-60-817-4116901  
**Macondo Exploration Well**

