



DAILY PPFG REPORT
Mississippi Canyon Block 252 #1 ST00 BP00
 OCS-G-32306
 API-60-817-4116900
Macondo Exploration Well



WELL INFORMATION

Rig : Marianas	RT – MSL : 89 ft	Water Depth : 4992 ft	RT – Mudline : 5081 ft
----------------	------------------	-----------------------	------------------------

OPERATIONS SUMMARY

TD hole section				
MD	TVD	Progress (24 hr)	Hole size	Current formation
9090'	9089'	120'	18x22"	Shale, siltstone, sandstone
Sensor Distances		Sonic: NA	PWD: 27.57'	GR: 29.17'
			Res: 29.90'	

PORE PRESSURE SUMMARY

Max PP: Open hole (ft MD)	10.2 ppg	PP Bottom hole	10.2 ppg	Last LOT: 7952 ft TVD	10.46 ppg
Surf MW:	10.1 ppg	ECD:	10.32 ppg	ESD min/ ESD max: (8898 MD)	10.24/10.31 ppg

Resistivity Analysis: Resistivity did not drop below 0.60 ohmm. Interpretation was that the pressure did not increase over this interval. Low resistivity values corresponded with more calcareous formation, however coincidentally calculated near the degree of the influx pressure.

Sonic Analysis: NA

Additional Observations:

After killing the well the decision was made to drill additional footage for casing seat purposes. Drilled with 10.1 ppg mud. Updated LOT value to 10.46 ppg for reporting purposes.

Let the MW drift down to 10.0 heavy from 9064 to 9073 in order to maintain ECDs below 10.3 ppg. Slight flow on flow check, increase MW back to 10.1 ppg. Trace splintery and angular cavings noted at 9073 ft MD. Trace splintery and angular cavings noted at 9090 ft MD. ESD minimum at 9073 connection was 10.24 ppg.

Connection gas:
 8937 234/43
 8971 178/35
 9065 209/50

Pressure Analyst: Paine **Date and Time:** Oct. 28, 2009 6:00



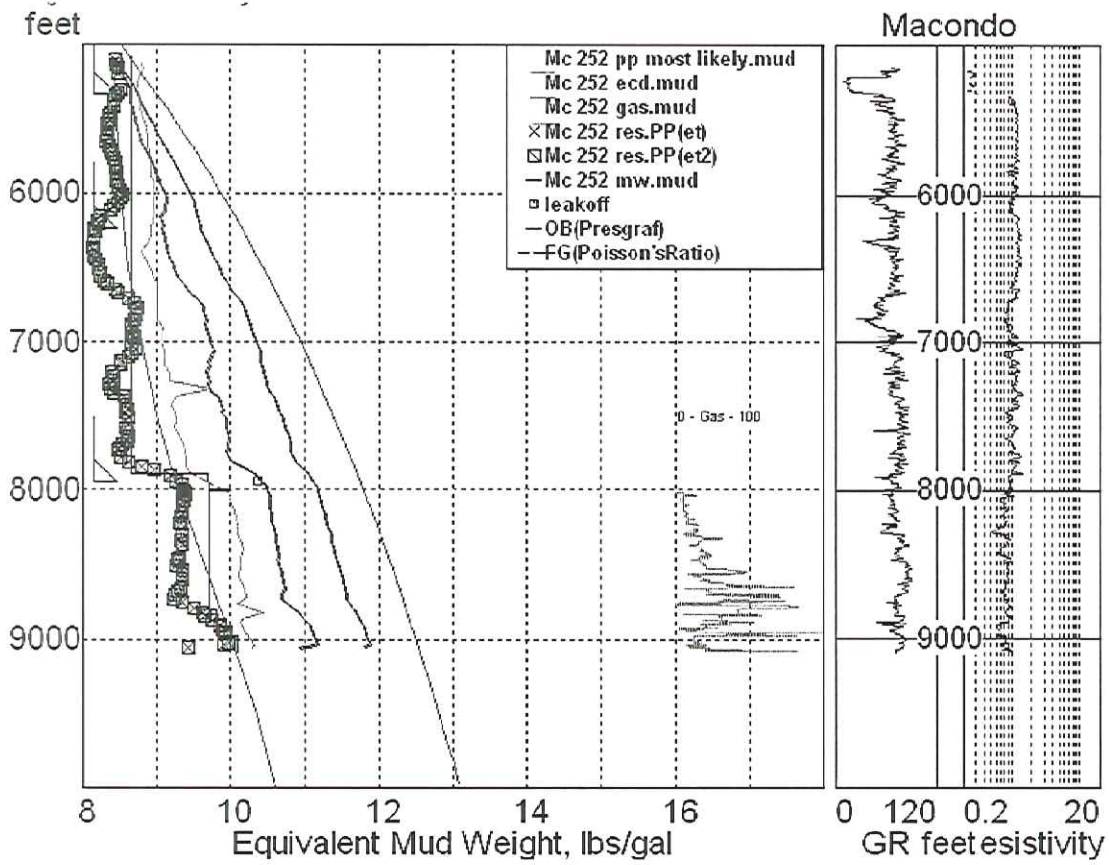


DAILY PPFG REPORT

Mississippi Canyon Block 252 #1 ST00 BP00
OCS-G-32306
API-60-817-4116900
Macondo Exploration Well



DAILY PRESSURE PLOT:





DAILY PFG REPORT

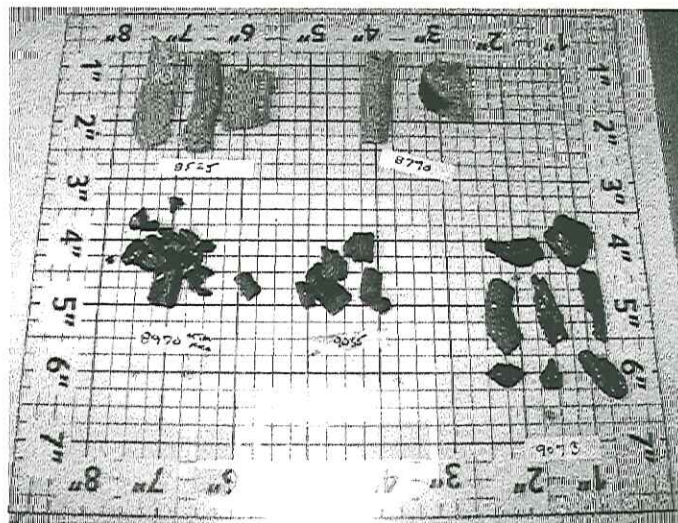
Mississippi Canyon Block 252 #1 ST00 BP00
OCS-G-32306
API-60-817-4116900
Macondo Exploration Well



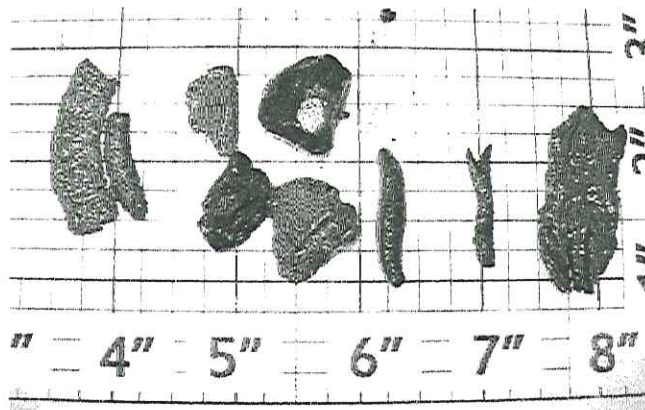
Cuttings/Cavings Analysis:

Prior to the kick, cuttings 1-3in long. After the kick, cuttings small, but clearly bit cut. Trace cavings noted with the 9073 circulation. Primarily angular with a few splintery coinciding with the pumps off gas and slight flow noted. Trace splintery and angular cavings noted at casing point 9090 ft MD.

Cuttings/Cavings Photograph :



Cuttings and cavings from 8000 to 9073



Cuttings and cavings from 9090 ft MD

